

Datasheet for ABIN5542643
anti-IL1RAPL1 antibody (AA 541-694)[Go to Product page](#)

4 Images

Overview

Quantity:	0.1 mg
Target:	IL1RAPL1
Binding Specificity:	AA 541-694
Reactivity:	Human
Host:	Mouse
Clonality:	Monoclonal
Conjugate:	This IL1RAPL1 antibody is un-conjugated
Application:	Western Blotting (WB), ELISA, Immunohistochemistry (IHC), Immunocytochemistry (ICC), Flow Cytometry (FACS)

Product Details

Immunogen:	Purified recombinant fragment of human IL1RAPL1 (AA: 541-694) expressed in E. coli.
Clone:	2H3C12
Isotype:	IgG1
Purification:	purified

Target Details

Target:	IL1RAPL1
Alternative Name:	IL1RAPL1 (IL1RAPL1 Products)
Background:	Description: The protein encoded by this gene is a member of the interleukin 1 receptor family

Target Details

and is similar to the interleukin 1 accessory proteins. It is most closely related to interleukin 1 receptor accessory protein-like 2 (IL1RAPL2). This gene and IL1RAPL2 are located at a region on chromosome X that is associated with X-linked non-syndromic mental retardation. Deletions and mutations in this gene were found in patients with mental retardation. This gene is expressed at a high level in post-natal brain structures involved in the hippocampal memory system, which suggests a specialized role in the physiological processes underlying memory and learning abilities.,

Aliases: IL1R8, MRX10, MRX21, MRX34, OPHN4, IL1RAPL, TIGIRR-2

Molecular Weight: 80 kDa

Gene ID: 11141

HGNC: 11141

Pathways: [Synaptic Membrane](#), [Growth Factor Binding](#)

Application Details

Application Notes: ELISA: 1:10000, WB: 1:500 - 1:2000, IHC: , ICC: , FCM:

Restrictions: For Research Use only

Handling

Format: Liquid

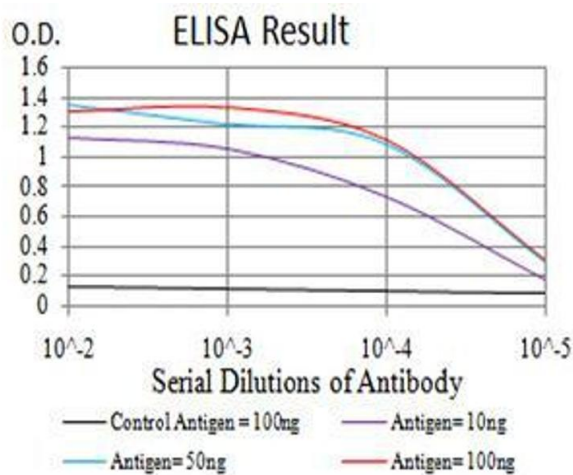
Buffer: Purified antibody in PBS with 0.05 % sodium azide

Preservative: Sodium azide

Precaution of Use: This product contains Sodium azide: a POISONOUS AND HAZARDOUS SUBSTANCE which should be handled by trained staff only.

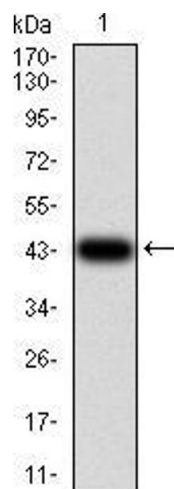
Storage: 4 °C/-20 °C

Storage Comment: 4°C, -20°C for long term storage



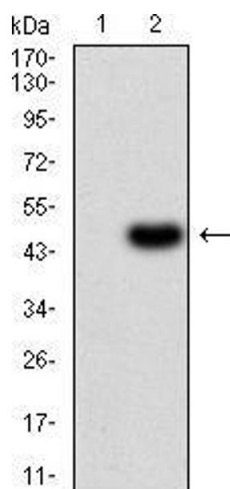
ELISA

Image 1. Black line: Control Antigen (100 ng),Purple line: Antigen (10 ng), Blue line: Antigen (50 ng), Red line:Antigen (100 ng)



Western Blotting

Image 2. Western blot analysis using IL1RAPL1 mAb against human IL1RAPL1 (AA: 541-694) recombinant protein. (Expected MW is 43.3 kDa)



Western Blotting

Image 3. Western blot analysis using IL1RAPL1 mAb against HEK293 (1) and IL1RAPL1 (AA: 541-694)-hlgGfc transfected HEK293 (2) cell lysate.

Please check the [product details page](#) for more images. Overall 4 images are available for ABIN5542643.