

Datasheet for ABIN5542644
anti-IL1RAPL1 antibody (AA 541-694)



[Go to Product page](#)

6 Images

Overview

Quantity:	100 µL
Target:	IL1RAPL1
Binding Specificity:	AA 541-694
Reactivity:	Human
Host:	Mouse
Clonality:	Monoclonal
Conjugate:	This IL1RAPL1 antibody is un-conjugated
Application:	Western Blotting (WB), ELISA, Immunocytochemistry (ICC), Flow Cytometry (FACS)

Product Details

Purpose:	IL1RAPL1 Antibody
Immunogen:	Purified recombinant fragment of human IL1RAPL1 (AA: 541-694) expressed in E. Coli.
Clone:	3E3D12
Isotype:	IgG1
Purification:	Purified antibody

Target Details

Target:	IL1RAPL1
Alternative Name:	IL1RAPL1 (IL1RAPL1 Products)
Background:	Description: The protein encoded by this gene is a member of the interleukin 1 receptor family

Target Details

and is similar to the interleukin 1 accessory proteins. It is most closely related to interleukin 1 receptor accessory protein-like 2 (IL1RAPL2). This gene and IL1RAPL2 are located at a region on chromosome X that is associated with X-linked non-syndromic mental retardation. Deletions and mutations in this gene were found in patients with mental retardation. This gene is expressed at a high level in post-natal brain structures involved in the hippocampal memory system, which suggests a specialized role in the physiological processes underlying memory and learning abilities.

Aliases: IL1R8, MRX10, MRX21, MRX34, OPHN4, IL1RAPL, TIGIRR-2

Molecular Weight: 80kDa

Gene ID: 11141

HGNC: 11141

UniProt: [Q9NZN1](#)

Pathways: [Synaptic Membrane, Growth Factor Binding](#)

Application Details

Application Notes: ELISA: 1/10000
FCM: 1/200 - 1/400
ICC: 1/200 - 1/1000

Restrictions: For Research Use only

Handling

Format: Liquid

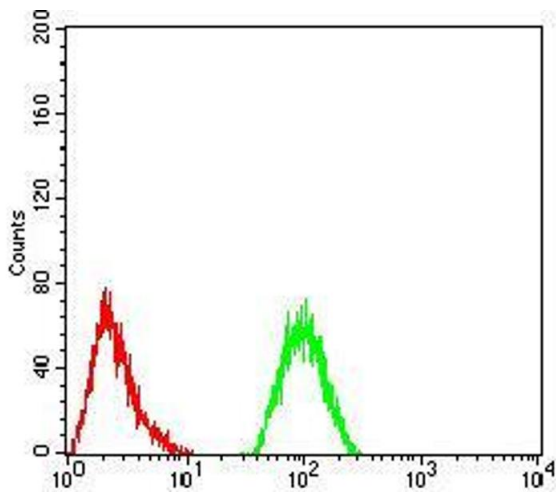
Buffer: Purified antibody in PBS with 0.05 % sodium azide.

Preservative: Sodium azide

Precaution of Use: This product contains Sodium azide: a POISONOUS AND HAZARDOUS SUBSTANCE which should be handled by trained staff only.

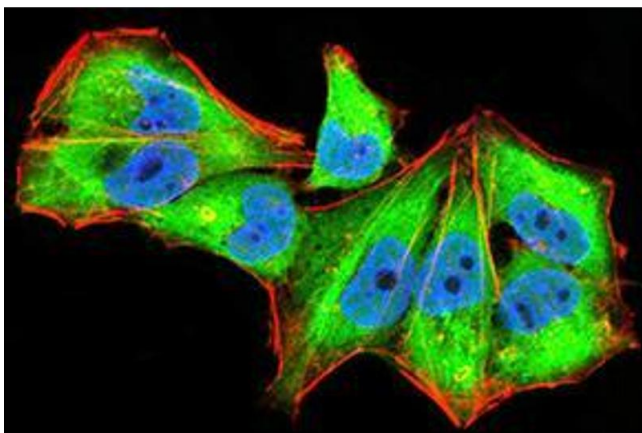
Storage: 4 °C,-20 °C

Storage Comment: Store at 4°C short term. Aliquot and store at -20°C long term. Avoid freeze/thaw cycles.



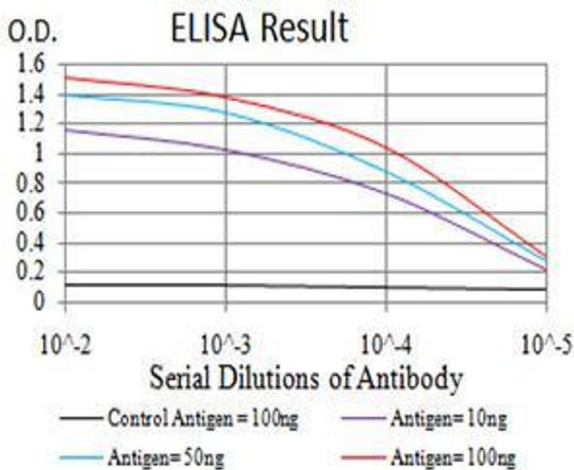
Flow Cytometry

Image 1. Flow cytometric analysis of Hela cells using IL1RAPL1 mouse mAb (green) and negative control (red).



Immunofluorescence

Image 2. Immunofluorescence analysis of Hela cells using IL1RAPL1 mouse mAb (green). Blue: DRAQ5 fluorescent DNA dye. Red: Actin filaments have been labeled with Alexa Fluor-555 phalloidin. Secondary antibody from Fisher (Cat#: 35503)



ELISA

Image 3. Black line: Control Antigen (100 ng), Purple line: Antigen (10 ng), Blue line: Antigen (50 ng), Red line: Antigen (100 ng)

Please check the [product details page](#) for more images. Overall 6 images are available for ABIN5542644.