

Datasheet for ABIN5542650  
**anti-MOB1A antibody (AA 1-216)**[Go to Product page](#)

## 4 Images

## Overview

|                      |  |
|----------------------|--|
| Quantity:            | 0.1 mg   |
| Target:              | MOB1A (MOBKL1B)  |
| Binding Specificity: | AA 1-216   |
| Reactivity:          | Human  |
| Host:                | Mouse  |
| Clonality:           | Monoclonal   |
| Conjugate:           | This MOB1A antibody is un-conjugated   |
| Application:         | ELISA, Western Blotting (WB), Immunohistochemistry (IHC), Flow Cytometry (FACS), Immunocytochemistry (ICC) |

## Product Details

|               |  |
|---------------|--|
| Immunogen:    | Purified recombinant fragment of human MOB1A (AA: 1-216) expressed in E. coli. |
| Clone:        | 2D3D11   |
| Isotype:      | IgG2b  |
| Purification: | purified   |

## Target Details

|                   |  |
|-------------------|--|
| Target:           | MOB1A (MOBKL1B)  |
| Alternative Name: | MOB1A ( <a href="#">MOBKL1B Products</a> )   |
| Background:       | Description: The protein encoded by this gene is a component of the Hippo signaling pathway, |

## Target Details

which controls organ size and tumor growth by enhancing apoptosis. Loss of the encoded protein results in cell proliferation and cancer formation. The encoded protein is also involved in the control of microtubule stability during cytokinesis. Several transcript variants encoding different isoforms have been found for this gene.,

Aliases: MOB1, MATS1, Mob4B, C2orf6, MOBK1B, MOBKL1B

|                   |        |
|-------------------|--------|
| Molecular Weight: | 25 kDa |
|-------------------|--------|

|          |       |
|----------|-------|
| Gene ID: | 55233 |
|----------|-------|

|       |       |
|-------|-------|
| HGNC: | 55233 |
|-------|-------|

## Application Details

|                    |  |
|--------------------|--|
| Application Notes: | ELISA: 1:10000, WB: 1:500 - 1:2000, IHC: , ICC: , FCM: 1:200 - 1:400 |
|--------------------|--|

|               |                       |
|---------------|-----------------------|
| Restrictions: | For Research Use only |
|---------------|-----------------------|

## Handling

|         |        |
|---------|--------|
| Format: | Liquid |
|---------|--------|

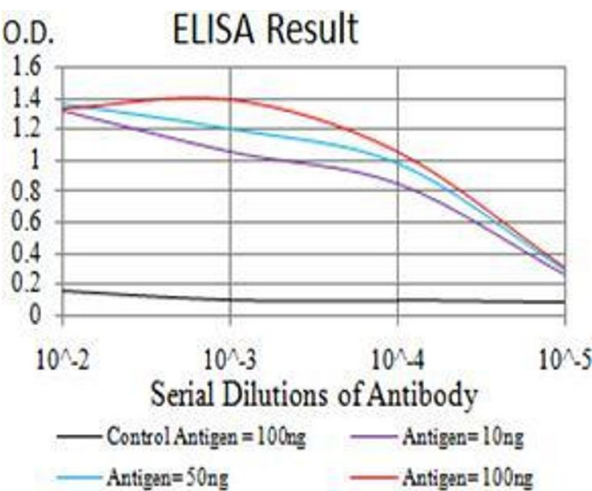
|         |   |
|---------|---|
| Buffer: | Purified antibody in PBS with 0.05 % sodium azide |
|---------|---|

|               |              |
|---------------|--------------|
| Preservative: | Sodium azide |
|---------------|--------------|

|                    |  |
|--------------------|--|
| Precaution of Use: | This product contains Sodium azide: a POISONOUS AND HAZARDOUS SUBSTANCE which should be handled by trained staff only. |
|--------------------|--|

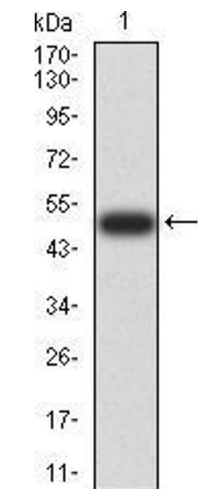
|          |             |
|----------|-------------|
| Storage: | 4 °C/-20 °C |
|----------|-------------|

|                  |                                  |
|------------------|----------------------------------|
| Storage Comment: | 4°C, -20°C for long term storage |
|------------------|----------------------------------|



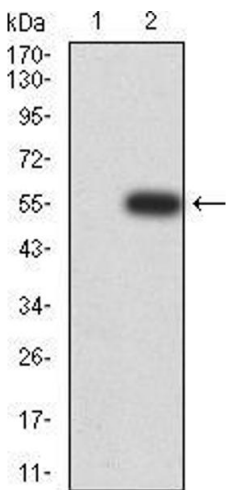
**ELISA**

**Image 1.** Black line: Control Antigen (100 ng);Purple line: Antigen (10ng); Blue line: Antigen (50 ng); Red line:Antigen (100 ng)



**Western Blotting**

**Image 2.** Western blot analysis using MOB1A mAb against human MOB1A (AA: 1-216) recombinant protein. (Expected MW is 51 kDa)



**Western Blotting**

**Image 3.** Western blot analysis using MOB1A mAb against HEK293 (1) and MOB1A (AA: 1-216)-hlgGfC transfected HEK293 (2) cell lysate.

Please check the [product details page](#) for more images. Overall 4 images are available for ABIN5542650.