

Datasheet for ABIN5542651
anti-MOB1A antibody (AA 1-216)[Go to Product page](#)

4 Images

Overview

Quantity:	0.1 mg
Target:	MOB1A (MOBKL1B)
Binding Specificity:	AA 1-216
Reactivity:	Human
Host:	Mouse
Clonality:	Monoclonal
Conjugate:	This MOB1A antibody is un-conjugated
Application:	ELISA, Western Blotting (WB), Immunohistochemistry (IHC), Flow Cytometry (FACS), Immunocytochemistry (ICC)

Product Details

Immunogen:	Purified recombinant fragment of human MOB1A (AA:1-216) expressed in E. coli.
Clone:	3E7B2
Isotype:	IgG1
Purification:	purified

Target Details

Target:	MOB1A (MOBKL1B)
Alternative Name:	MOB1A (MOBKL1B Products)
Background:	Description: The protein encoded by this gene is a component of the Hippo signaling pathway,

Target Details

which controls organ size and tumor growth by enhancing apoptosis. Loss of the encoded protein results in cell proliferation and cancer formation. The encoded protein is also involved in the control of microtubule stability during cytokinesis. Several transcript variants encoding different isoforms have been found for this gene.,

Aliases: MOB1, MATS1, Mob4B, C2orf6, MOBK1B, MOBKL1B

Molecular Weight:	25 kDa
-------------------	--------

Gene ID:	55233
----------	-------

HGNC:	55233
-------	-------

Application Details

Application Notes:	ELISA: 1:10000, WB: 1:500 - 1:2000, IHC: , ICC: , FCM: 1:200 - 1:400
--------------------	--

Restrictions:	For Research Use only
---------------	-----------------------

Handling

Format:	Liquid
---------	--------

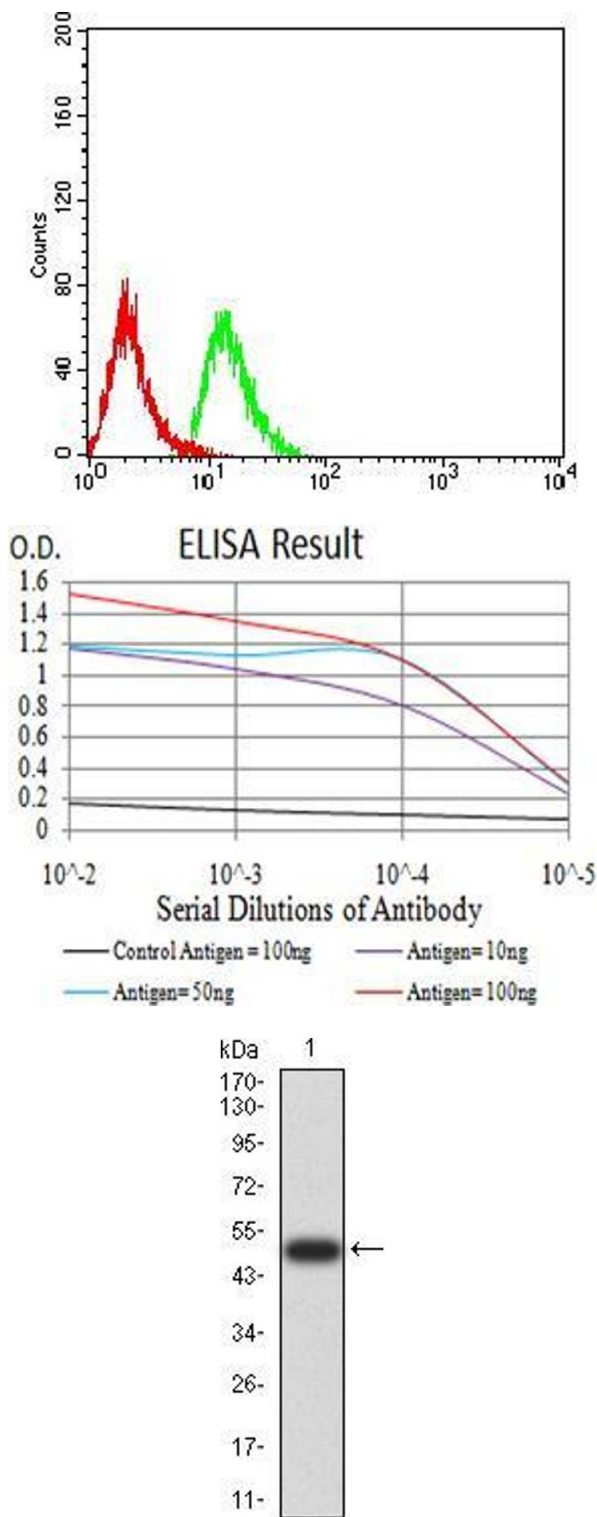
Buffer:	Purified antibody in PBS with 0.05 % sodium azide
---------	---

Preservative:	Sodium azide
---------------	--------------

Precaution of Use:	This product contains Sodium azide: a POISONOUS AND HAZARDOUS SUBSTANCE which should be handled by trained staff only.
--------------------	--

Storage:	4 °C/-20 °C
----------	-------------

Storage Comment:	4°C, -20°C for long term storage
------------------	----------------------------------



Flow Cytometry

Image 1. Flow cytometric analysis of Hela cells using MOB1A mouse mAb (green) and negative control (red).

ELISA

Image 2. Black line: Control Antigen (100 ng);Purple line: Antigen (10ng); Blue line: Antigen (50 ng); Red line:Antigen (100 ng)

Western Blotting

Image 3. Western blot analysis using MOB1A mAb against human MOB1A (AA: 1-216) recombinant protein. (Expected MW is 51 kDa)

Please check the [product details page](#) for more images. Overall 4 images are available for ABIN5542651.