

Datasheet for ABIN5542652
anti-RAD21 antibody (AA 287-403)



[Go to Product page](#)

8 Images

Overview

Quantity:	0.1 mg
Target:	RAD21
Binding Specificity:	AA 287-403
Reactivity:	Human, Rat, Monkey
Host:	Mouse
Clonality:	Monoclonal
Conjugate:	This RAD21 antibody is un-conjugated
Application:	Western Blotting (WB), ELISA, Immunohistochemistry (IHC), Flow Cytometry (FACS), Immunocytochemistry (ICC)

Product Details

Immunogen:	Purified recombinant fragment of human RAD21 (AA: 287-403) expressed in E. coli.
Clone:	1B6D1
Isotype:	IgG1
Purification:	purified

Target Details

Target:	RAD21
Alternative Name:	RAD21 (RAD21 Products)
Background:	Description: The protein encoded by this gene is highly similar to the gene product of

Target Details

Schizosaccharomyces pombe rad21, a gene involved in the repair of DNA double-strand breaks, as well as in chromatid cohesion during mitosis. This protein is a nuclear phospho-protein, which becomes hyperphosphorylated in cell cycle M phase. The highly regulated association of this protein with mitotic chromatin specifically at the centromere region suggests its role in sister chromatid cohesion in mitotic cells.,

Aliases: HR21, MCD1, NXP1, SCC1, CDLS4, hHR21, HRAD21

Molecular Weight: 71.7 kDa

Gene ID: 5885

HGNC: 5885

Pathways: [Positive Regulation of Endopeptidase Activity](#)

Application Details

Application Notes: ELISA: 1:10000, WB: 1:500 - 1:2000, IHC: 1:200 - 1:1000, ICC: 1:200 - 1:1000, FCM: 1:200 - 1:400

Restrictions: For Research Use only

Handling

Format: Liquid

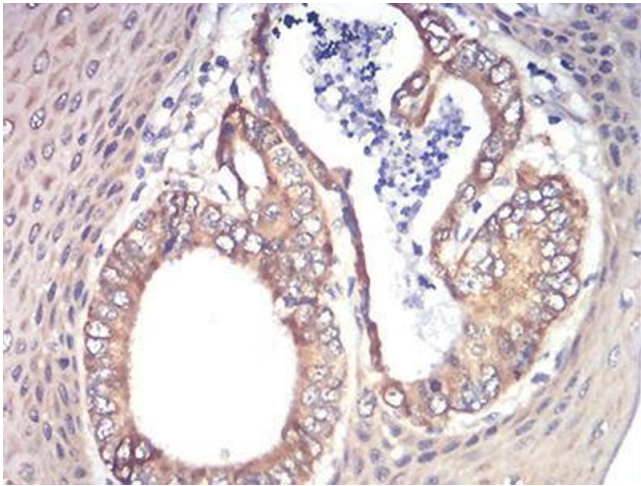
Buffer: Purified antibody in PBS with 0.05 % sodium azide

Preservative: Sodium azide

Precaution of Use: This product contains Sodium azide: a POISONOUS AND HAZARDOUS SUBSTANCE which should be handled by trained staff only.

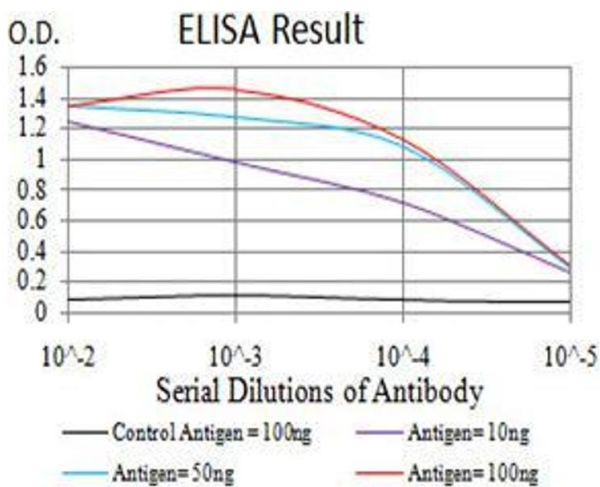
Storage: 4 °C/-20 °C

Storage Comment: 4°C, -20°C for long term storage



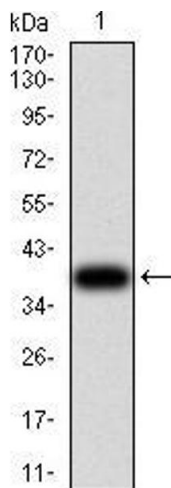
Immunohistochemistry

Image 1. Immunohistochemical analysis of paraffin-embedded esophageal cancer tissues using RAD21 mouse mAb with DAB staining.



ELISA

Image 2. Black line: Control Antigen (100 ng), Purple line: Antigen (10 ng), Blue line: Antigen (50 ng), Red line: Antigen (100 ng)



Western Blotting

Image 3. Western blot analysis using RAD21 mAb against human RAD21 (AA: 287-403) recombinant protein. (Expected MW is 39.3 kDa)

Please check the [product details page](#) for more images. Overall 8 images are available for ABIN5542652.