

Datasheet for ABIN5542656  
**anti-KDM5B antibody (AA 231-319)**[Go to Product page](#)

## 4 Images

## Overview

Quantity:	0.1 mg
Target:	KDM5B
Binding Specificity:	AA 231-319
Reactivity:	Human
Host:	Mouse
Clonality:	Monoclonal
Conjugate:	This KDM5B antibody is un-conjugated
Application:	Western Blotting (WB), ELISA, Immunohistochemistry (IHC), Flow Cytometry (FACS), Immunocytochemistry (ICC)

## Product Details

Immunogen:	Purified recombinant fragment of human KDM5B (AA: 231-319) expressed in E. coli.
Clone:	7H3D7
Isotype:	IgG1
Purification:	purified

## Target Details

Target:	KDM5B
Alternative Name:	KDM5B ( <a href="#">KDM5B Products</a> )
Background:	Description: KDM5B (lysine (K)-specific demethylase 5B) is a protein-coding gene. Diseases

## Target Details

associated with KDM5B include retinoblastoma. GO annotations related to this gene include oxidoreductase activity, acting on paired donors, with incorporation or reduction of molecular oxygen, 2-oxoglutarate as one donor, and incorporation of one atom each of oxygen into both donors and sequence-specific DNA binding transcription factor activity. An important paralog of this gene is KDM5C.,

Aliases: CT31, PLU1, PUT1, PLU-1, JARID1B, PPP1R98, RBBP2H1A

Molecular Weight:	175.6 kDa
-------------------	-----------

Gene ID:	10765
----------	-------

HGNC:	10765
-------	-------

Pathways:	<a href="#">Warburg Effect</a>
-----------	--------------------------------

## Application Details

Application Notes:	ELISA: 1:10000, WB: 1:500 - 1:2000, IHC: , ICC: , FCM: 1:200 - 1:400
--------------------	--

Restrictions:	For Research Use only
---------------	-----------------------

## Handling

Format:	Liquid
---------	--------

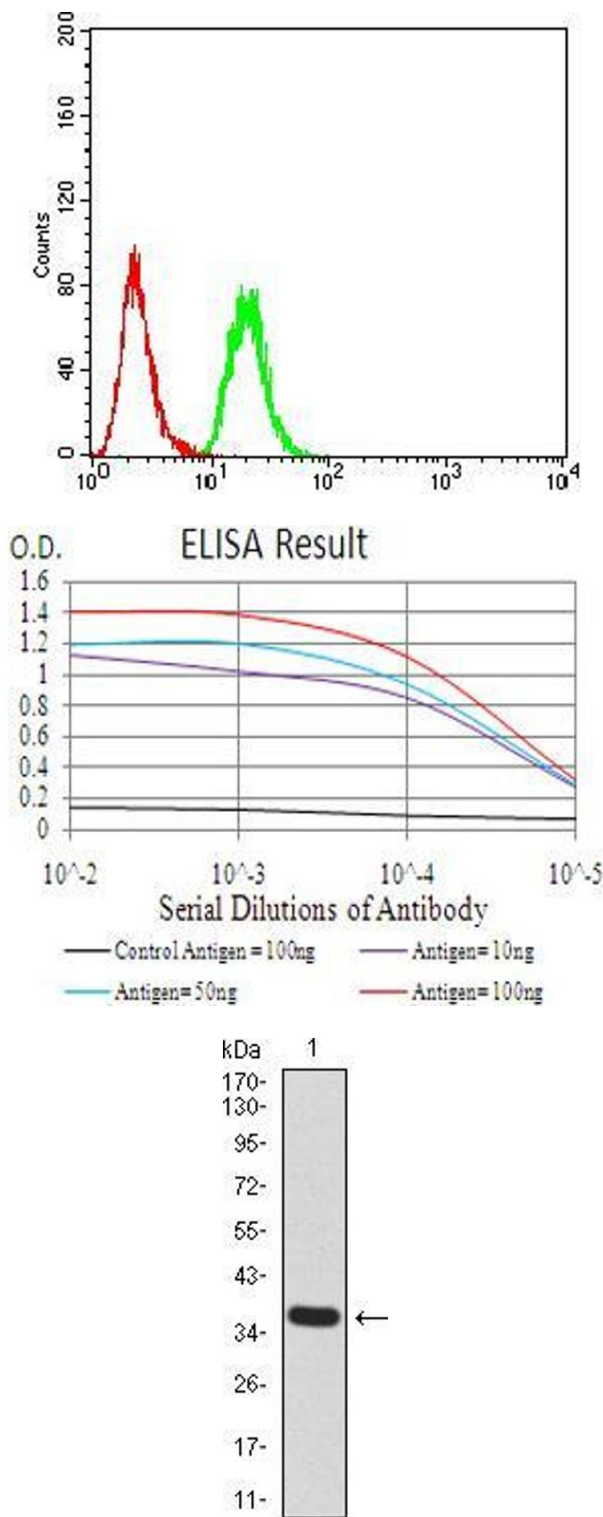
Buffer:	Purified antibody in PBS with 0.05 % sodium azide
---------	---

Preservative:	Sodium azide
---------------	--------------

Precaution of Use:	This product contains Sodium azide: a POISONOUS AND HAZARDOUS SUBSTANCE which should be handled by trained staff only.
--------------------	--

Storage:	4 °C/-20 °C
----------	-------------

Storage Comment:	4°C, -20°C for long term storage
------------------	----------------------------------



Flow Cytometry

**Image 1.** Flow cytometric analysis of MCF-7 cells using KDM5B mouse mAb (green) and negative control (red).

ELISA

**Image 2.** Black line: Control Antigen (100 ng), Purple line: Antigen(10 ng), Blue line: Antigen (50 ng), Red line: Antigen (100 ng),

Western Blotting

**Image 3.** Western blot analysis using KDM5B mAb against human KDM5B (AA: 231-319) recombinant protein. (Expected MW is 36.2 kDa)

Please check the [product details page](#) for more images. Overall 4 images are available for ABIN5542656.