

Datasheet for ABIN5542662
anti-MMEL1 antibody (AA 1-107)[Go to Product page](#)

6 Images

Overview

Quantity:	0.1 mg
Target:	MMEL1
Binding Specificity:	AA 1-107
Reactivity:	Human
Host:	Mouse
Clonality:	Monoclonal
Conjugate:	This MMEL1 antibody is un-conjugated
Application:	Western Blotting (WB), ELISA, Flow Cytometry (FACS), Immunohistochemistry (IHC)

Product Details

Immunogen:	Purified recombinant fragment of human MMEL1 (AA: 1-107) expressed in E. coli.
Clone:	2D2H5
Isotype:	IgG1
Purification:	purified

Target Details

Target:	MMEL1
Alternative Name:	MMEL1 (MMEL1 Products)
Background:	Description: The protein encoded by this gene is a member of the neutral endopeptidase (NEP) or membrane metallo-endopeptidase (MME) family. Family members play important roles in

Target Details

pain perception, arterial pressure regulation, phosphate metabolism and homeostasis. This protein is a type II transmembrane protein and is thought to be expressed as a secreted protein. This gene is expressed mainly in testis with weak expression in the brain, kidney, and heart. Aliases: NL1, NL2, SEP, NEP2, MMEL2, NEPII

Molecular Weight: 89.4 kDa

Gene ID: 79258

HGNC: 79258

Application Details

Application Notes: ELISA: 1:10000, WB: 1:500 - 1:2000, IHC: 1:200 - 1:1000, FCM: 1:200 - 1:400

Restrictions: For Research Use only

Handling

Format: Liquid

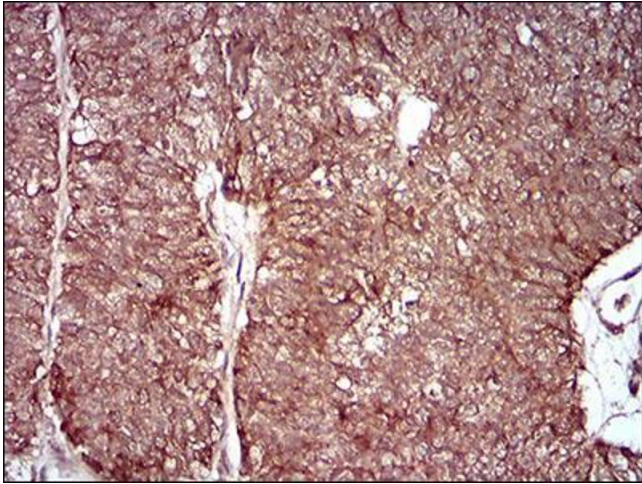
Buffer: Purified antibody in PBS with 0.05 % sodium azide.

Preservative: Sodium azide

Precaution of Use: This product contains Sodium azide: a POISONOUS AND HAZARDOUS SUBSTANCE which should be handled by trained staff only.

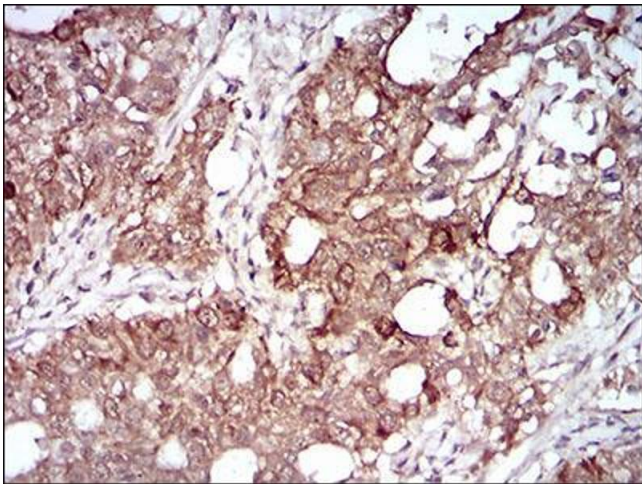
Storage: 4 °C/-20 °C

Storage Comment: 4°C, -20°C for long term storage



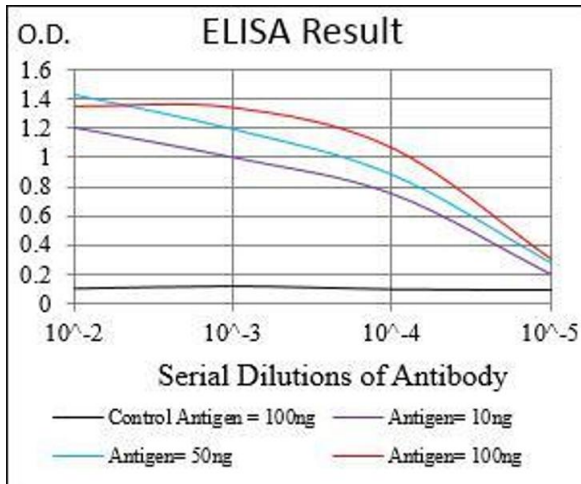
Immunohistochemistry

Image 1. Immunohistochemical analysis of paraffin-embedded ovarian cancer tissues using MMEL1 mouse mAb with DAB staining.



Immunohistochemistry

Image 2. Immunohistochemical analysis of paraffin-embedded cervical cancer tissues using MMEL1 mouse mAb with DAB staining.



ELISA

Image 3. Black line: Control Antigen (100 ng), Purple line: Antigen(10 ng), Blue line: Antigen (50 ng), Red line: Antigen (100 ng),

Please check the [product details page](#) for more images. Overall 6 images are available for ABIN5542662.