



[Go to Product page](#)

Datasheet for ABIN5542668
anti-SSH1 antibody (AA 1032-1044)

3 Images

Overview

Quantity:	0.1 mg
Target:	SSH1
Binding Specificity:	AA 1032-1044
Reactivity:	Human
Host:	Mouse
Clonality:	Monoclonal
Conjugate:	This SSH1 antibody is un-conjugated
Application:	Western Blotting (WB), ELISA, Immunohistochemistry (IHC), Flow Cytometry (FACS), Immunocytochemistry (ICC)

Product Details

Immunogen:	Synthesized peptide fragment of human SLINGSHOT-1L (AA: 1032-1044) expressed in E. coli.
Clone:	6C11G9
Isotype:	IgG1

Target Details

Target:	SSH1
Alternative Name:	SLINGSHOT-1L (SSH1 Products)
Background:	Description: The protein encoded by this gene belongs to the slingshot homolog (SSH) family of phosphatases, which regulate actin filament dynamics. The SSH proteins dephosphorylate and activate the actin binding/depolymerizing factor cofilin, which subsequently binds to actin

Target Details

filaments and stimulates their disassembly. Cofilin is inactivated by kinases such as LIM domain kinase-1 (LIMK1), which may also be dephosphorylated and inactivated by SSH proteins. The SSH family thus appears to play a role in actin dynamics by reactivating cofilin proteins. Alternatively spliced transcript variants encoding different isoforms have been described for this gene.,

Aliases: SSH1,SSH1L

Molecular Weight: 115.5 kDa

Gene ID: 54434

HGNC: 54434

Pathways: [CXCR4-mediated Signaling Events](#)

Application Details

Application Notes: ELISA: 1:10000, WB: , IHC: 1:200 - 1:1000, ICC: , FCM: 1:200 - 1:400

Restrictions: For Research Use only

Handling

Format: Liquid

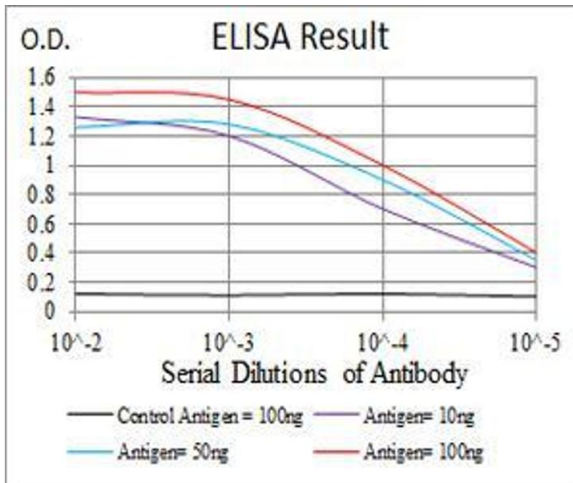
Buffer: Purified antibody in PBS with 0.05 % sodium azide

Preservative: Sodium azide

Precaution of Use: This product contains Sodium azide: a POISONOUS AND HAZARDOUS SUBSTANCE which should be handled by trained staff only.

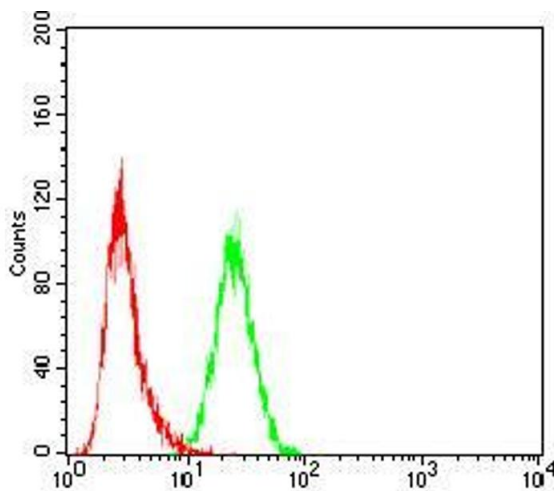
Storage: 4 °C/-20 °C

Storage Comment: 4°C, -20°C for long term storage



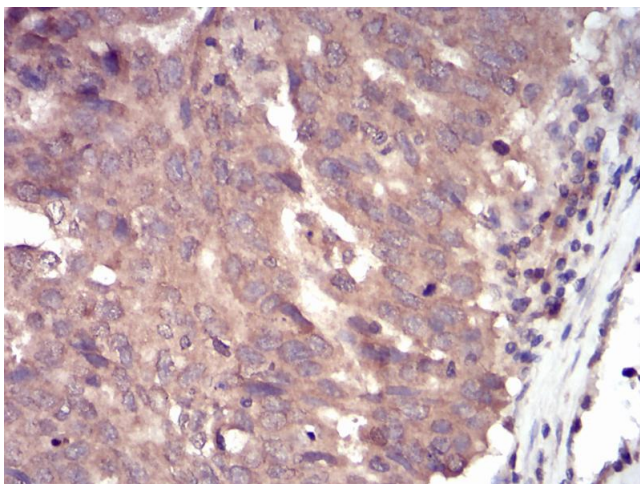
ELISA

Image 1. Black line: Control Antigen (100 ng), Purple line: Antigen(10 ng), Blue line: Antigen (50 ng), Red line: Antigen (100 ng),



Flow Cytometry

Image 2. Flow cytometric analysis of Hela cells using SLINGSHOT-1L mouse mAb (green) and negative control (red).



Immunohistochemistry

Image 3. Immunohistochemical analysis of paraffin-embedded ovarian cancer tissues using SLINGSHOT-1L mouse mAb with DAB staining.