

Datasheet for ABIN5542669
anti-SSH1 antibody (AA 1032-1044)



[Go to Product page](#)

3 Images

Overview

Quantity:	100 µL
Target:	SSH1
Binding Specificity:	AA 1032-1044
Reactivity:	Human
Host:	Mouse
Clonality:	Monoclonal
Conjugate:	This SSH1 antibody is un-conjugated
Application:	ELISA, Flow Cytometry (FACS), Immunocytochemistry (ICC)

Product Details

Purpose:	SLINGSHOT-1L Antibody
Immunogen:	Synthesized peptide fragment of human SLINGSHOT-1L (AA: 1032-1044) expressed in E. Coli.
Clone:	1A5C8
Isotype:	IgG1
Purification:	Purified antibody

Target Details

Target:	SSH1
Alternative Name:	SLINGSHOT-1L (SSH1 Products)
Background:	Description: The protein encoded by this gene belongs to the slingshot homolog (SSH) family of

Target Details

phosphatases, which regulate actin filament dynamics. The SSH proteins dephosphorylate and activate the actin binding/depolymerizing factor cofilin, which subsequently binds to actin filaments and stimulates their disassembly. Cofilin is inactivated by kinases such as LIM domain kinase-1 (LIMK1), which may also be dephosphorylated and inactivated by SSH proteins. The SSH family thus appears to play a role in actin dynamics by reactivating cofilin proteins. Alternatively spliced transcript variants encoding different isoforms have been described for this gene.

Aliases: SSH1,SSH1L

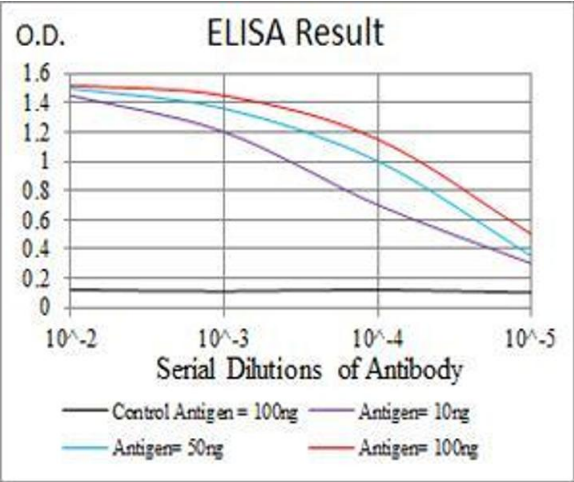
Molecular Weight:	115.5kDa
Gene ID:	54434
HGNC:	54434
UniProt:	Q8WYL5
Pathways:	CXCR4-mediated Signaling Events

Application Details

Application Notes:	ELISA: 1/10000 FCM: 1/200 - 1/400 ICC: 1/200 - 1/1000
Restrictions:	For Research Use only

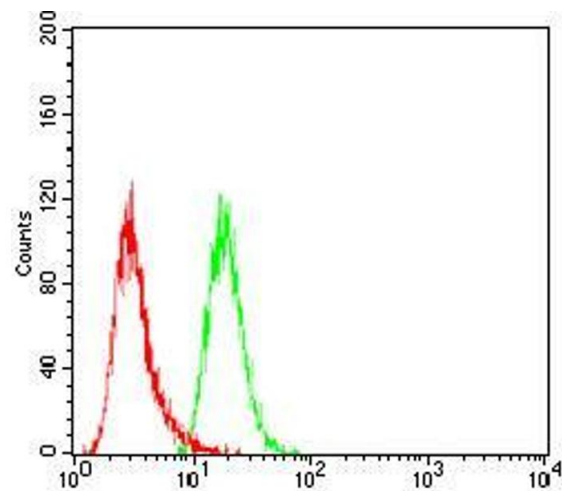
Handling

Format:	Liquid
Buffer:	Purified antibody in PBS with 0.05 % sodium azide.
Preservative:	Sodium azide
Precaution of Use:	This product contains Sodium azide: a POISONOUS AND HAZARDOUS SUBSTANCE which should be handled by trained staff only.
Storage:	4 °C,-20 °C
Storage Comment:	Store at 4°C short term. Aliquot and store at -20°C long term. Avoid freeze/thaw cycles.



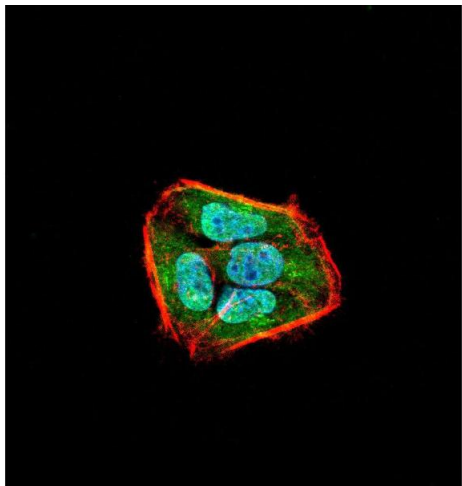
ELISA

Image 1. Black line: Control Antigen (100 ng), Purple line: Antigen(10 ng), Blue line: Antigen (50 ng), Red line: Antigen (100 ng),



Flow Cytometry

Image 2. Flow cytometric analysis of Hela cells using SLINGSHOT-1L mouse mAb (green) and negative control (red).



Immunofluorescence

Image 3. Immunofluorescence analysis of Hela cells using SLINGSHOT-1L mouse mAb (green). Blue: DRAQ5 fluorescent DNA dye. Red: Actin filaments have been labeled with Alexa Fluor- 555 phalloidin. Secondary antibody from Fisher (Cat#: 35503)