

Datasheet for ABIN5542670
anti-RAD50 antibody (AA 228-359)[Go to Product page](#)

3 Images

Overview

Quantity:	0.1 mg
Target:	RAD50
Binding Specificity:	AA 228-359
Reactivity:	Human
Host:	Mouse
Clonality:	Monoclonal
Conjugate:	This RAD50 antibody is un-conjugated
Application:	Western Blotting (WB), Immunohistochemistry (IHC), ELISA, Flow Cytometry (FACS), Immunocytochemistry (ICC)

Product Details

Immunogen:	Purified recombinant fragment of human RAD50 (AA: 228-359) expressed in E. coli.
Clone:	5A8E5
Isotype:	IgG1
Purification:	purified

Target Details

Target:	RAD50
Alternative Name:	RAD50 (RAD50 Products)
Background:	Description: The protein encoded by this gene is highly similar to Saccharomyces cerevisiae

Target Details

Rad50, a protein involved in DNA double-strand break repair. This protein forms a complex with MRE11 and NBS1. The protein complex binds to DNA and displays numerous enzymatic activities that are required for nonhomologous joining of DNA ends. This protein, cooperating with its partners, is important for DNA double-strand break repair, cell cycle checkpoint activation, telomere maintenance, and meiotic recombination. Knockout studies of the mouse homolog suggest this gene is essential for cell growth and viability. Mutations in this gene are the cause of Nijmegen breakage syndrome-like disorder.,

Aliases: NBSLD, RAD502, hRad50

Molecular Weight: 154 kDa

Gene ID: 10111

HGNC: 10111

Pathways: [DNA Damage Repair](#), [Protein targeting to Nucleus](#)

Application Details

Application Notes: ELISA: 1:10000, WB: 1:500 - 1:2000, IHC: , ICC: , FCM:

Restrictions: For Research Use only

Handling

Format: Liquid

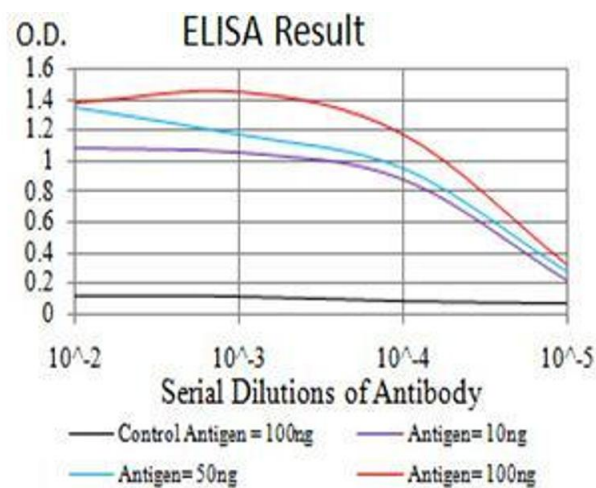
Buffer: Purified antibody in PBS with 0.05 % sodium azide

Preservative: Sodium azide

Precaution of Use: This product contains Sodium azide: a POISONOUS AND HAZARDOUS SUBSTANCE which should be handled by trained staff only.

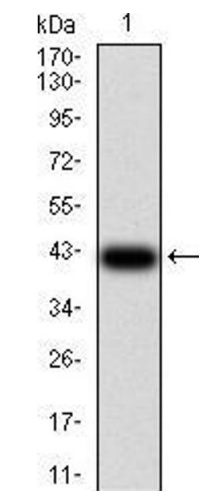
Storage: 4 °C/-20 °C

Storage Comment: 4°C, -20°C for long term storage



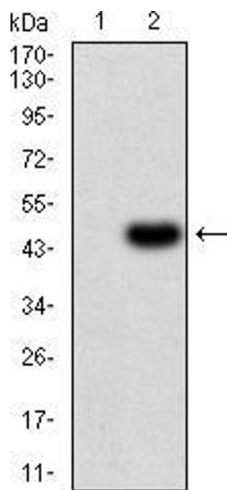
ELISA

Image 1. Black line: Control Antigen (100 ng),Purple line: Antigen (10 ng), Blue line: Antigen (50 ng), Red line:Antigen (100 ng)



Western Blotting

Image 2. Western blot analysis using RAD50 mAb against human RAD50 (AA: 228-359) recombinant protein. (Expected MW is 41.7 kDa)



Western Blotting

Image 3. Western blot analysis using RAD50 mAb against HEK293 (1) and RAD50 (AA: 228-359)-hlgGFc transfected HEK293 (2) cell lysate.