

Datasheet for ABIN5542671  
**anti-RAD50 antibody (AA 228-359)**[Go to Product page](#)

## 7 Images

## Overview

Quantity:	0.1 mg
Target:	RAD50
Binding Specificity:	AA 228-359
Reactivity:	Human, Rat
Host:	Mouse
Clonality:	Monoclonal
Conjugate:	This RAD50 antibody is un-conjugated
Application:	Western Blotting (WB), Immunohistochemistry (IHC), ELISA, Flow Cytometry (FACS), Immunocytochemistry (ICC)

## Product Details

Immunogen:	Purified recombinant fragment of human RAD50 (AA: 228-359) expressed in E. coli.
Clone:	3D2G10
Isotype:	IgG2a
Purification:	purified

## Target Details

Target:	RAD50
Alternative Name:	RAD50 ( <a href="#">RAD50 Products</a> )
Background:	Description: The protein encoded by this gene is highly similar to Saccharomyces cerevisiae

## Target Details

Rad50, a protein involved in DNA double-strand break repair. This protein forms a complex with MRE11 and NBS1. The protein complex binds to DNA and displays numerous enzymatic activities that are required for nonhomologous joining of DNA ends. This protein, cooperating with its partners, is important for DNA double-strand break repair, cell cycle checkpoint activation, telomere maintenance, and meiotic recombination. Knockout studies of the mouse homolog suggest this gene is essential for cell growth and viability. Mutations in this gene are the cause of Nijmegen breakage syndrome-like disorder.,

Aliases: NBSLD, RAD502, hRad50

Molecular Weight: 154 kDa

Gene ID: 10111

HGNC: 10111

Pathways: [DNA Damage Repair](#), [Protein targeting to Nucleus](#)

## Application Details

Application Notes: ELISA: 1:10000, WB: 1:500 - 1:2000, IHC: 1:200 - 1:1000, ICC: , FCM: 1:200 - 1:400

Restrictions: For Research Use only

## Handling

Format: Liquid

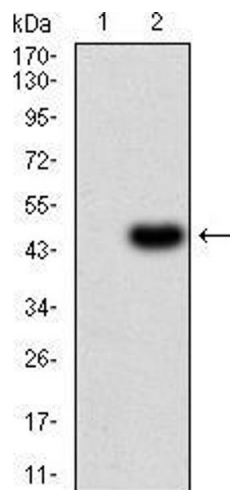
Buffer: Purified antibody in PBS with 0.05 % sodium azide

Preservative: Sodium azide

Precaution of Use: This product contains Sodium azide: a POISONOUS AND HAZARDOUS SUBSTANCE which should be handled by trained staff only.

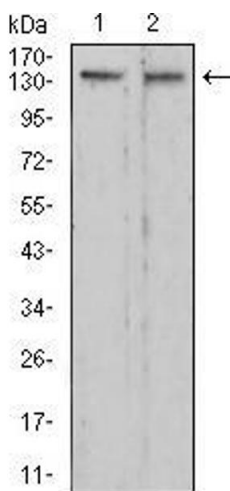
Storage: 4 °C/-20 °C

Storage Comment: 4°C, -20°C for long term storage



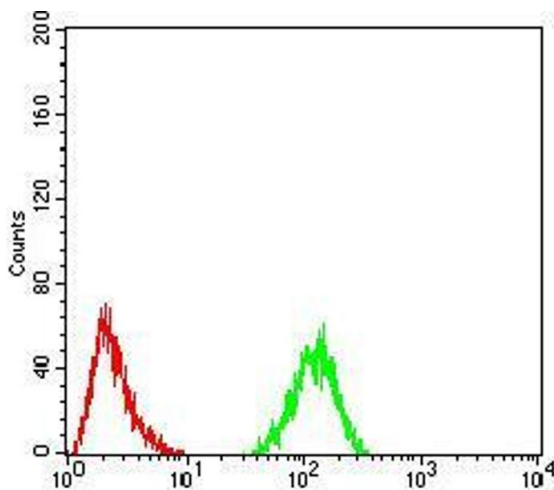
#### Western Blotting

**Image 1.** Western blot analysis using RAD50 mAb against HEK293 (1) and RAD50 (AA: 228-359)-hlgGFc transfected HEK293 (2) cell lysate.



#### Western Blotting

**Image 2.** Western blot analysis using RAD50 mouse mAb against C6 (1) and HepG2 (2) cell lysate.



#### Flow Cytometry

**Image 3.** Flow cytometric analysis of HeLa cells using RAD50 mouse mAb (green) and negative control (red).

Please check the [product details page](#) for more images. Overall 7 images are available for ABIN5542671.