

Datasheet for ABIN5542683

anti-Phospholipase C gamma 1 antibody (AA 39-181)

4 Images

[Go to Product page](#)

Overview

Quantity:	0.1 mg
Target:	Phospholipase C gamma 1 (PLCG1)
Binding Specificity:	AA 39-181
Reactivity:	Human
Host:	Mouse
Clonality:	Monoclonal
Conjugate:	This Phospholipase C gamma 1 antibody is un-conjugated
Application:	Western Blotting (WB), ELISA, Immunohistochemistry (IHC), Immunocytochemistry (ICC), Flow Cytometry (FACS)

Product Details

Immunogen:	Purified recombinant fragment of human PLCG1 (AA: 39-181) expressed in E. coli.
Clone:	2F3E10
Isotype:	IgG2a
Purification:	purified

Target Details

Target:	Phospholipase C gamma 1 (PLCG1)
Alternative Name:	PLCG1 (PLCG1 Products)
Background:	Description: The protein encoded by this gene catalyzes the formation of inositol 1,4,5-

Target Details

trisphosphate and diacylglycerol from phosphatidylinositol 4,5-bisphosphate. This reaction uses calcium as a cofactor and plays an important role in the intracellular transduction of receptor-mediated tyrosine kinase activators. For example, when activated by SRC, the encoded protein causes the Ras guanine nucleotide exchange factor RasGRP1 to translocate to the Golgi, where it activates Ras. Also, this protein has been shown to be a major substrate for heparin-binding growth factor 1 (acidic fibroblast growth factor)-activated tyrosine kinase. Two transcript variants encoding different isoforms have been found for this gene.,

Aliases: PLC1, NCKAP3, PLC-II, PLC148, PLCgamma1

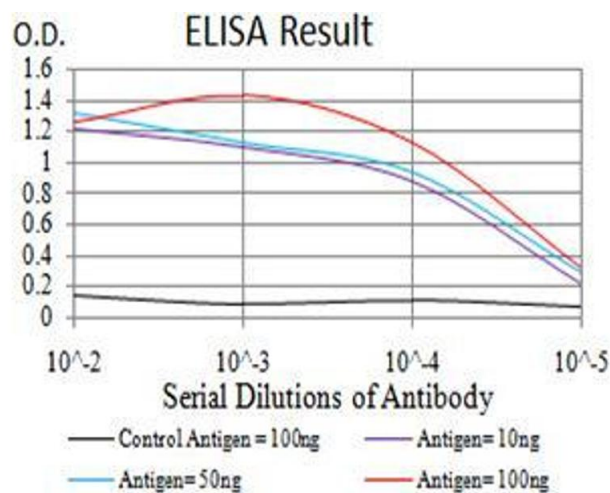
Molecular Weight:	148.5 kDa
Gene ID:	5335
HGNC:	5335
Pathways:	RTK Signaling , WNT Signaling , TCR Signaling , Fc-epsilon Receptor Signaling Pathway , EGFR Signaling Pathway , Neurotrophin Signaling Pathway , Thyroid Hormone Synthesis , Inositol Metabolic Process , Myometrial Relaxation and Contraction , Regulation of Muscle Cell Differentiation , Regulation of G-Protein Coupled Receptor Protein Signaling , Skeletal Muscle Fiber Development , G-protein mediated Events , Signaling Events mediated by VEGFR1 and VEGFR2 , Interaction of EGFR with phospholipase C-gamma , VEGFR1 Specific Signals , VEGF Signaling

Application Details

Application Notes:	ELISA: 1:10000, WB: 1:500 - 1:2000, IHC: , ICC: , FCM: 1:200 - 1:400
Restrictions:	For Research Use only

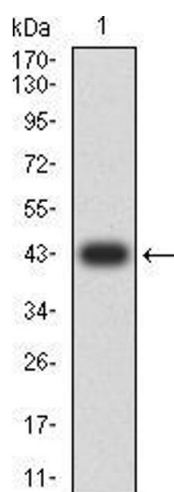
Handling

Format:	Liquid
Buffer:	Purified antibody in PBS with 0.05 % sodium azide
Preservative:	Sodium azide
Precaution of Use:	This product contains Sodium azide: a POISONOUS AND HAZARDOUS SUBSTANCE which should be handled by trained staff only.
Storage:	4 °C/-20 °C
Storage Comment:	4°C, -20°C for long term storage



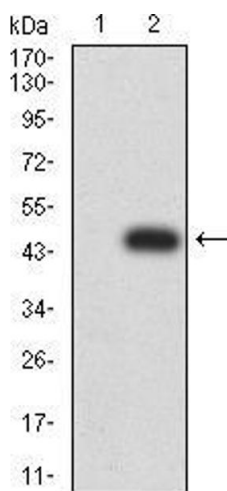
ELISA

Image 1. Black line: Control Antigen (100 ng);Purple line: Antigen (10ng); Blue line: Antigen (50 ng); Red line:Antigen (100 ng)



Western Blotting

Image 2. Western blot analysis using PLCG1 mAb against human PLCG1 (AA: 39-181) recombinant protein. (Expected MW is 43 kDa)



Western Blotting

Image 3. Western blot analysis using PLCG1 mAb against HEK293 (1) and PLCG1 (AA: 39-181)-hlgGfc transfected HEK293 (2) cell lysate.

Please check the [product details page](#) for more images. Overall 4 images are available for ABIN5542683.