



[Go to Product page](#)

Datasheet for ABIN5542685  
**anti-RALB antibody (AA 89-206)**

7 Images

### Overview

Quantity:	0.1 mg
Target:	RALB (Ralb)
Binding Specificity:	AA 89-206
Reactivity:	Human, Mouse, Monkey
Host:	Mouse
Clonality:	Monoclonal
Conjugate:	This RALB antibody is un-conjugated
Application:	Western Blotting (WB), ELISA, Immunohistochemistry (IHC), Flow Cytometry (FACS), Immunocytochemistry (ICC)

### Product Details

Immunogen:	Purified recombinant fragment of human RALB (AA: 89-206) expressed in E. coli.
Clone:	7F8B4
Isotype:	IgG2b
Purification:	purified

### Target Details

Target:	RALB (Ralb)
Alternative Name:	RALB ( <a href="#">Ralb Products</a> )
Background:	This gene encodes a GTP-binding protein that belongs to the small GTPase superfamily and

## Target Details

Ras family of proteins. GTP-binding proteins mediate the transmembrane signaling initiated by the occupancy of certain cell surface receptors.,

Molecular Weight: 23.4 kDa

Gene ID: 5899

HGNC: 4313

Pathways: [Neurotrophin Signaling Pathway](#), [CXCR4-mediated Signaling Events](#)

## Application Details

Application Notes: ELISA: 1:10000, WB: 1:500 - 1:2000, IHC: 1:200 - 1:1000, ICC: , FCM: 1:200 - 1:400

Restrictions: For Research Use only

## Handling

Format: Liquid

Buffer: Purified antibody in PBS with 0.05 % sodium azide

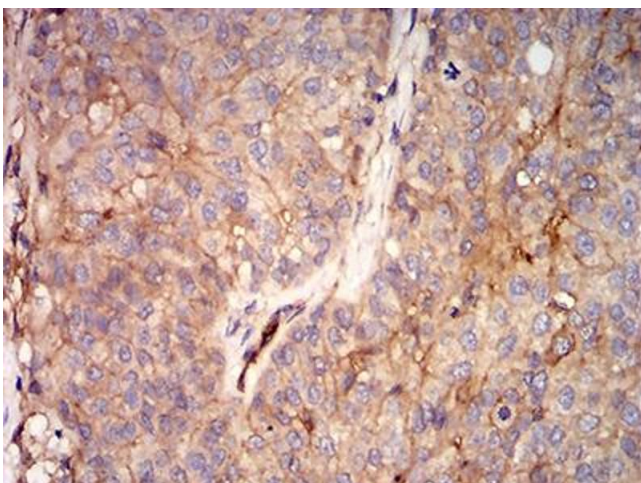
Preservative: Sodium azide

Precaution of Use: This product contains Sodium azide: a POISONOUS AND HAZARDOUS SUBSTANCE which should be handled by trained staff only.

Storage: 4 °C/-20 °C

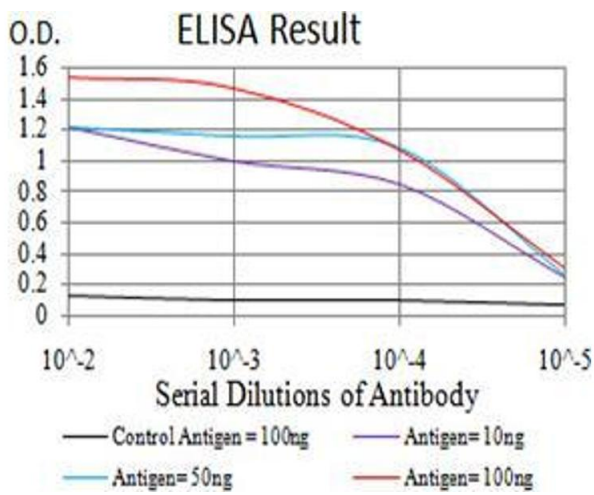
Storage Comment: 4°C, -20°C for long term storage

## Images



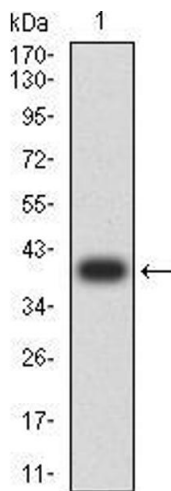
### Immunohistochemistry

**Image 1.** Immunohistochemical analysis of paraffin-embedded bladder cancer tissues using RALB mouse mAb with DAB staining.



### ELISA

**Image 2.** Black line: Control Antigen (100 ng);Purple line: Antigen (10ng); Blue line: Antigen (50 ng); Red line:Antigen (100 ng)



### Western Blotting

**Image 3.** Western blot analysis using RALB mAb against human RALB (AA: 89-206) recombinant protein. (Expected MW is 39.7 kDa)

Please check the [product details page](#) for more images. Overall 7 images are available for ABIN5542685.