



[Go to Product page](#)

Datasheet for ABIN5542688
anti-KDM1B antibody (AA 6-129)

8 Images

Overview

| | |
|----------------------|--|
| Quantity: | 0.1 mg |
| Target: | KDM1B |
| Binding Specificity: | AA 6-129 |
| Reactivity: | Human |
| Host: | Mouse |
| Clonality: | Monoclonal |
| Conjugate: | This KDM1B antibody is un-conjugated |
| Application: | ELISA, Western Blotting (WB), Immunohistochemistry (IHC), Flow Cytometry (FACS), Immunocytochemistry (ICC) |

Product Details

| | |
|---------------|---|
| Immunogen: | Purified recombinant fragment of human AOF1 (AA: 6-129) expressed in E. coli. |
| Clone: | 5E10C1 |
| Isotype: | IgG1 |
| Purification: | purified |

Target Details

| | |
|-------------------|--|
| Target: | KDM1B |
| Alternative Name: | AOF1 (KDM1B Products) |
| Background: | Description: Flavin-dependent histone demethylases, such as KDM1B, regulate histone lysine |

Target Details

methylation, an epigenetic mark that regulates gene expression and chromatin function.,

Aliases: KDM1B, LSD2, C6orf193, bA204B7.3, dJ298J15.2

Molecular Weight: 92 kDa

Gene ID: 221656

HGNC: 221656

Pathways: [Warburg Effect](#)

Application Details

Application Notes: ELISA: 1:10000, WB: 1:500 - 1:2000, IHC: 1:200 - 1:1000, ICC: 1:200 - 1:1000, FCM: 1:200 - 1:400

Restrictions: For Research Use only

Handling

Format: Liquid

Buffer: Purified antibody in PBS with 0.05 % sodium azide

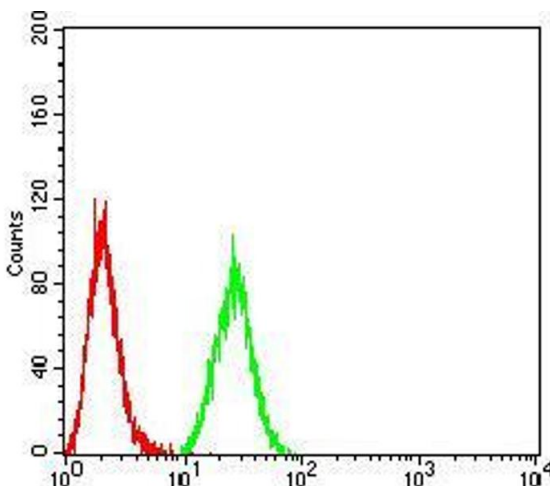
Preservative: Sodium azide

Precaution of Use: This product contains Sodium azide: a POISONOUS AND HAZARDOUS SUBSTANCE which should be handled by trained staff only.

Storage: 4 °C/-20 °C

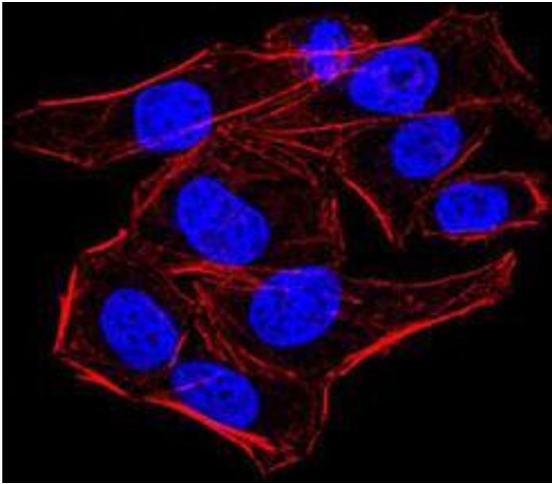
Storage Comment: 4°C, -20°C for long term storage

Images



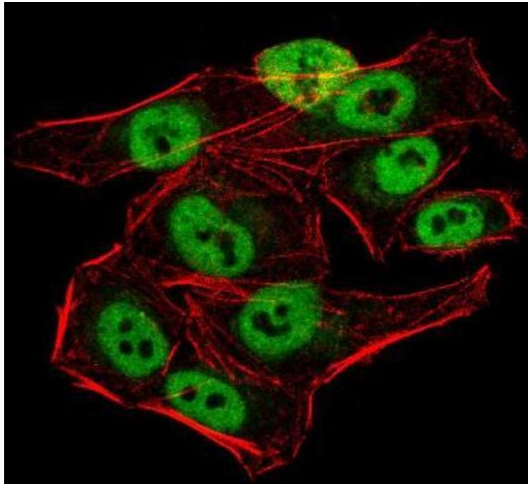
Flow Cytometry

Image 1. Flow cytometric analysis of HeLa cells using AOF1 mouse mAb (green) and negative control (red).



Immunofluorescence

Image 2. Immunofluorescence analysis of HeLa cells using AOF1 mouse mAb. Blue: DRAQ5 fluorescent DNA dye. Red: Actin filaments have been labeled with Alexa Fluor- 555 phalloidin.



Immunofluorescence

Image 3. Immunofluorescence analysis of HeLa cells using AOF1 mouse mAb (green). Blue: DRAQ5 fluorescent DNA dye. Red: Actin filaments have been labeled with Alexa Fluor- 555 phalloidin. Secondary antibody from Fisher (Cat#: 35503)

Please check the [product details page](#) for more images. Overall 8 images are available for ABIN5542688.