

Datasheet for ABIN5542690
anti-SEC31A antibody (AA 429-571)[Go to Product page](#)

4 Images

Overview

Quantity:	0.1 mg
Target:	SEC31A
Binding Specificity:	AA 429-571
Reactivity:	Human
Host:	Mouse
Clonality:	Monoclonal
Conjugate:	This SEC31A antibody is un-conjugated
Application:	Western Blotting (WB), ELISA, Immunohistochemistry (IHC), Flow Cytometry (FACS), Immunocytochemistry (ICC)

Product Details

Immunogen:	Purified recombinant fragment of human SEC31A (AA: 429-571) expressed in E. coli.
Clone:	5D12C6
Isotype:	IgG1
Purification:	purified

Target Details

Target:	SEC31A
Alternative Name:	SEC31A (SEC31A Products)
Background:	Description: The protein encoded by this gene shares similarity with the yeast Sec31 protein,

Target Details

and is a component of the outer layer of the coat protein complex II (COPII). The encoded protein is involved in vesicle budding from the endoplasmic reticulum (ER) and contains multiple WD repeats near the N-terminus and a proline-rich region in the C-terminal half. It associates with the protein encoded by the SEC13 homolog, nuclear pore and COPII coat complex component (SEC13), and is required for ER-Golgi transport. Monoubiquitylation of this protein by CUL3-KLHL12 was found to regulate the size of COPII coats to accommodate unusually shaped cargo. Alternative splicing results in multiple transcript variants encoding different isoforms.,

Aliases: ABP125, ABP130, HSPC275, HSPC334, SEC31L1

Molecular Weight:	133 kDa
-------------------	---------

Gene ID:	22872
----------	-------

HGNC:	22872
-------	-------

Pathways:	ER-Nucleus Signaling
-----------	--------------------------------------

Application Details

Application Notes:	ELISA: 1:10000, WB: 1:500 - 1:2000, IHC: 1:200 - 1:1000, ICC: , FCM:
--------------------	----------------------------------------------------------------------

Restrictions:	For Research Use only
---------------	-----------------------

Handling

Format:	Liquid
---------	--------

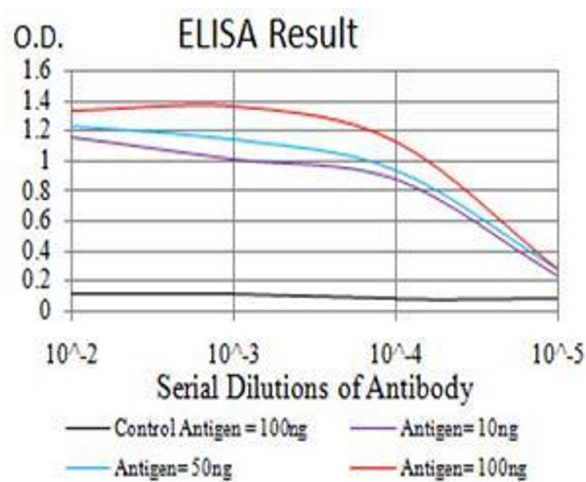
Buffer:	Purified antibody in PBS with 0.05 % sodium azide
---------	---------------------------------------------------

Preservative:	Sodium azide
---------------	--------------

Precaution of Use:	This product contains Sodium azide: a POISONOUS AND HAZARDOUS SUBSTANCE which should be handled by trained staff only.
--------------------	------------------------------------------------------------------------------------------------------------------------

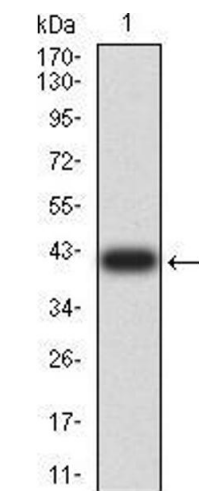
Storage:	4 °C/-20 °C
----------	-------------

Storage Comment:	4°C, -20°C for long term storage
------------------	----------------------------------



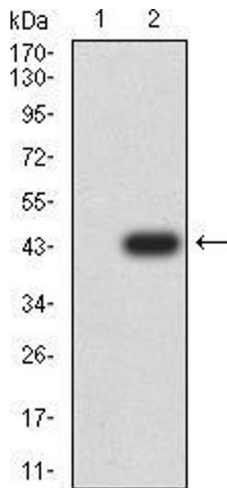
ELISA

Image 1. Black line: Control Antigen (100 ng);Purple line: Antigen (10ng); Blue line: Antigen (50 ng); Red line:Antigen (100 ng)



Western Blotting

Image 2. Western blot analysis using SEC31A mAb against human SEC31A (AA: 429-571) recombinant protein. (Expected MW is 41.8 kDa)



Western Blotting

Image 3. Western blot analysis using SEC31A mAb against HEK293 (1) and SEC31A (AA: 429-571)-hlgGFc transfected HEK293 (2) cell lysate.

Please check the [product details page](#) for more images. Overall 4 images are available for ABIN5542690.