



[Go to Product page](#)

Datasheet for ABIN5542698
anti-KBTBD8 antibody (AA 264-464)

5 Images

Overview

Quantity:	0.1 mg
Target:	KBTBD8
Binding Specificity:	AA 264-464
Reactivity:	Human
Host:	Mouse
Clonality:	Monoclonal
Conjugate:	This KBTBD8 antibody is un-conjugated
Application:	Western Blotting (WB), ELISA, Immunohistochemistry (IHC), Flow Cytometry (FACS), Immunocytochemistry (ICC)

Product Details

Immunogen:	Purified recombinant fragment of human KBTBD8 (AA: 264-464) expressed in E. coli.
Clone:	7G8A6
Isotype:	IgG1
Purification:	purified

Target Details

Target:	KBTBD8
Alternative Name:	KBTBD8 (KBTBD8 Products)
Background:	Description: KBTBD8 (kelch repeat and BTB (POZ) domain containing 8) is a protein-coding

Target Details

gene. An important paralog of this gene is KLHL21.,

Aliases: TA-KRP

Molecular Weight: 68.8 kDa

Gene ID: 84541

HGNC: 84541

Application Details

Application Notes: ELISA: 1:10000, WB: 1:500 - 1:2000, IHC: , ICC: , FCM: 1:200 - 1:400

Restrictions: For Research Use only

Handling

Format: Liquid

Buffer: Purified antibody in PBS with 0.05 % sodium azide

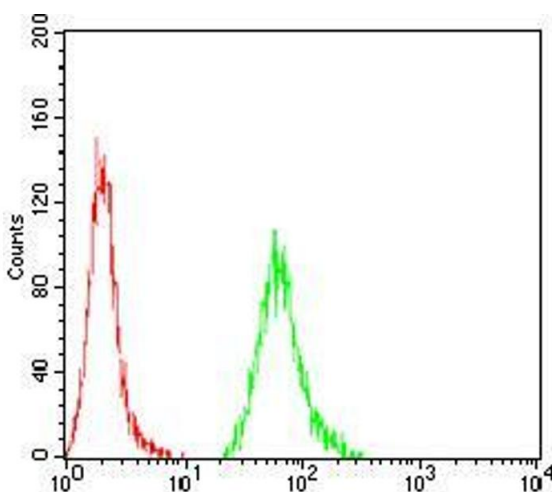
Preservative: Sodium azide

Precaution of Use: This product contains Sodium azide: a POISONOUS AND HAZARDOUS SUBSTANCE which should be handled by trained staff only.

Storage: 4 °C/-20 °C

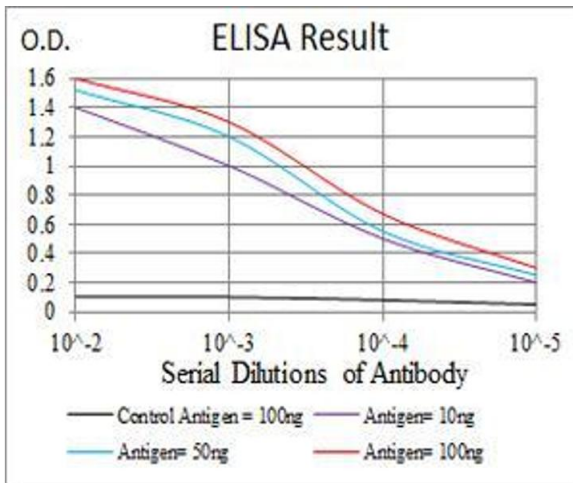
Storage Comment: 4°C, -20°C for long term storage

Images



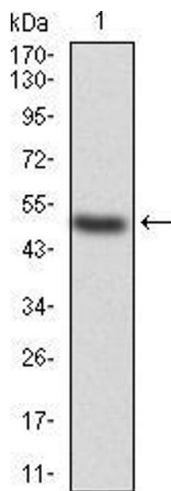
Flow Cytometry

Image 1. Flow cytometric analysis of A431 cells using KBTBD8 mouse mAb (green) and negative control (red).



ELISA

Image 2. Black line: Control Antigen (100 ng), Purple line: Antigen(10 ng), Blue line: Antigen (50 ng), Red line: Antigen (100 ng),



Western Blotting

Image 3. Western blot analysis using KBTBD8 mAb against human KBTBD8 (AA: 264-464) recombinant protein. (Expected MW is 48.7 kDa)

Please check the [product details page](#) for more images. Overall 5 images are available for ABIN5542698.