

Datasheet for ABIN5542705

anti-Complement C3c antibody (AA 1521-1649)

5 Images

1 Publication

[Go to Product page](#)

Overview

Quantity:	0.1 mg
Target:	Complement C3c (C3C)
Binding Specificity:	AA 1521-1649
Reactivity:	Human
Host:	Mouse
Clonality:	Monoclonal
Conjugate:	This Complement C3c antibody is un-conjugated
Application:	ELISA, Immunohistochemistry (IHC), Western Blotting (WB), Immunocytochemistry (ICC), Flow Cytometry (FACS)

Product Details

Immunogen:	Purified recombinant fragment of human C3C (AA: 1521-1649) expressed in E. coli.
Clone:	8B5H2
Isotype:	IgG1
Purification:	purified

Target Details

Target:	Complement C3c (C3C)
Alternative Name:	C3C (C3C Products)
Background:	Description: Complement component C3 plays a central role in the activation of complement

Target Details

system. Its activation is required for both classical and alternative complement activation pathways. The encoded preproprotein is proteolytically processed to generate alpha and beta subunits that form the mature protein, which is then further processed to generate numerous peptide products. The C3a peptide, also known as the C3a anaphylatoxin, modulates inflammation and possesses antimicrobial activity. Mutations in this gene are associated with atypical hemolytic uremic syndrome and age-related macular degeneration in human patients., Aliases: ASP, C3a, C3b, AHUS5, ARMD9, CPAMD1, HEL-S-62p

Molecular Weight:	187.1 kDa
-------------------	-----------

Gene ID:	718
----------	-----

HGNC:	718
-------	-----

Application Details

Application Notes:	ELISA: 1:10000, WB: 1:500 - 1:2000, IHC: 1:200 - 1:1000, ICC: , FCM:
--------------------	--

Restrictions:	For Research Use only
---------------	-----------------------

Handling

Format:	Liquid
---------	--------

Buffer:	Purified antibody in PBS with 0.05 % sodium azide
---------	---

Preservative:	Sodium azide
---------------	--------------

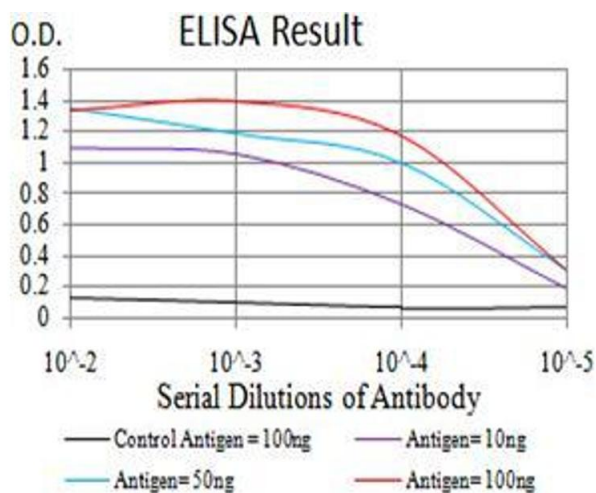
Precaution of Use:	This product contains Sodium azide: a POISONOUS AND HAZARDOUS SUBSTANCE which should be handled by trained staff only.
--------------------	--

Storage:	4 °C/-20 °C
----------	-------------

Storage Comment:	4°C, -20°C for long term storage
------------------	----------------------------------

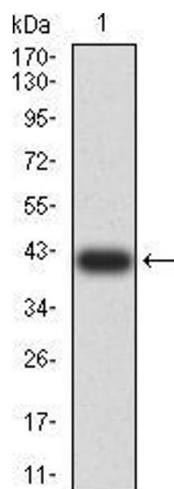
Publications

Product cited in:	Helsby, Leader, Fenn, Gulsen, Bryant, Doughton, Sharpe, Whitley, Caunt, James, Pope, Kelly, Chalmers: "CiteAb: a searchable antibody database that ranks antibodies by the number of times they have been cited." in: BMC cell biology , Vol. 15, pp. 6, (2014) (PubMed).
-------------------	--



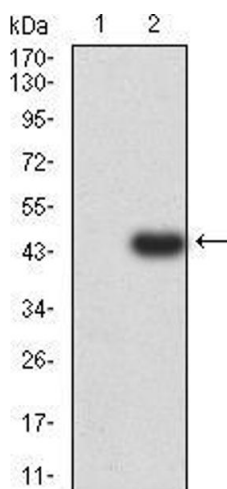
ELISA

Image 1. Black line: Control Antigen (100 ng);Purple line: Antigen (10ng); Blue line: Antigen (50 ng); Red line:Antigen (100 ng)



Western Blotting

Image 2. Western blot analysis using C3C mAb against human C3C (AA: 1521-1649) recombinant protein. (Expected MW is 40.7 kDa)



Western Blotting

Image 3. Western blot analysis using C3C mAb against HEK293 (1) and C3C (AA: 1521-1649)-hlgGfc transfected HEK293 (2) cell lysate.

Please check the [product details page](#) for more images. Overall 5 images are available for ABIN5542705.