

Datasheet for ABIN5542706

anti-Complement C3c antibody (AA 1521-1649)[Go to Product page](#)**7** Images

Overview

Quantity:	100 µL
Target:	Complement C3c (C3C)
Binding Specificity:	AA 1521-1649
Reactivity:	Human
Host:	Mouse
Clonality:	Monoclonal
Conjugate:	This Complement C3c antibody is un-conjugated
Application:	ELISA, Immunohistochemistry (IHC), Western Blotting (WB), Immunocytochemistry (ICC), Flow Cytometry (FACS)

Product Details

Purpose:	C3C Antibody
Immunogen:	Purified recombinant fragment of human C3C (AA: 1521-1649) expressed in E. Coli.
Clone:	4C6A8
Isotype:	IgG1
Purification:	Purified antibody

Target Details

Target:	Complement C3c (C3C)
Alternative Name:	C3C (C3C Products)

Target Details

Background: Description: Complement component C3 plays a central role in the activation of complement system. Its activation is required for both classical and alternative complement activation pathways. The encoded preproprotein is proteolytically processed to generate alpha and beta subunits that form the mature protein, which is then further processed to generate numerous peptide products. The C3a peptide, also known as the C3a anaphylatoxin, modulates inflammation and possesses antimicrobial activity. Mutations in this gene are associated with atypical hemolytic uremic syndrome and age-related macular degeneration in human patients.
Aliases: ASP, C3a, C3b, AHUS5, ARMD9, CPAMD1, HEL-S-62p

Molecular Weight: 187.1kDa

Gene ID: 718

HGNC: 718

UniProt: [P01024](#)

Application Details

Application Notes: ELISA: 1/10000
FCM: 1/200 - 1/400
ICC: 1/200 - 1/1000

Restrictions: For Research Use only

Handling

Format: Liquid

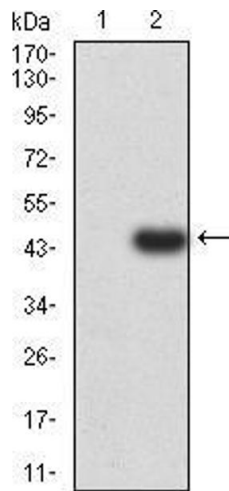
Buffer: Purified antibody in PBS with 0.05 % sodium azide.

Preservative: Sodium azide

Precaution of Use: This product contains Sodium azide: a POISONOUS AND HAZARDOUS SUBSTANCE which should be handled by trained staff only.

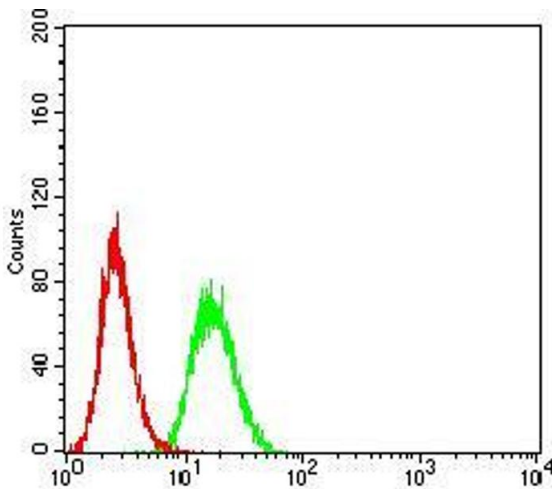
Storage: 4 °C, -20 °C

Storage Comment: Store at 4°C short term. Aliquot and store at -20°C long term. Avoid freeze/thaw cycles.



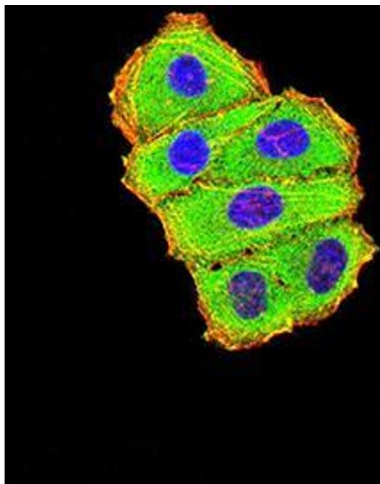
Western Blotting

Image 1. Western blot analysis using C3C mAb against HEK293 (1) and C3C (AA: 1521-1649)-hlgGFc transfected HEK293 (2) cell lysate.



Flow Cytometry

Image 2. Flow cytometric analysis of Hela cells using C3C mouse mAb (green) and negative control (red).



Immunocytochemistry

Image 3. Immunofluorescence analysis of Hela cells using C3C mouse mAb (green). Blue: DRAQ5 fluorescent DNA dye. Red: Actin filaments have been labeled with Alexa Fluor- 555 phalloidin. Secondary antibody from Fisher

Please check the [product details page](#) for more images. Overall 7 images are available for ABIN5542706.