

Datasheet for ABIN5542707  
**anti-c-MET antibody (AA 743-932)**[Go to Product page](#)

## 7 Images

## Overview

Quantity:	0.1 mg
Target:	c-MET (MET)
Binding Specificity:	AA 743-932
Reactivity:	Human, Monkey
Host:	Mouse
Clonality:	Monoclonal
Conjugate:	This c-MET antibody is un-conjugated
Application:	Western Blotting (WB), ELISA, Immunohistochemistry (IHC), Flow Cytometry (FACS), Immunocytochemistry (ICC)

## Product Details

Immunogen:	Purified recombinant fragment of human MET (AA 743-932) expressed in E. Coli.
Clone:	5E9C4
Isotype:	IgG1

## Target Details

Target:	c-MET (MET)
Alternative Name:	MET ( <a href="#">MET Products</a> )
Background:	This gene encodes a member of the receptor tyrosine kinase family of proteins and the product of the proto-oncogene MET. The encoded preproprotein is proteolytically processed to generate alpha and beta subunits that are linked via disulfide bonds to form the mature receptor. Further

## Target Details

processing of the beta subunit results in the formation of the M10 peptide, which has been shown to reduce lung fibrosis. Binding of its ligand, hepatocyte growth factor, induces dimerization and activation of the receptor, which plays a role in cellular survival, embryogenesis, and cellular migration and invasion. Mutations in this gene are associated with papillary renal cell carcinoma, hepatocellular carcinoma, and various head and neck cancers. Amplification and overexpression of this gene are also associated with multiple human cancers.,

Molecular Weight: 71.3kDa

HGNC: 6925

Pathways: [RTK Signaling](#), [Carbohydrate Homeostasis](#), [Synaptic Membrane](#), [Signaling of Hepatocyte Growth Factor Receptor](#)

## Application Details

Application Notes: ELISA: 1:10000, WB: 1:500 - 1:2000, IHC: 1:200 - 1:1000, ICC: 1:200 - 1:1000, FCM: 1:200 - 1:400

Restrictions: For Research Use only

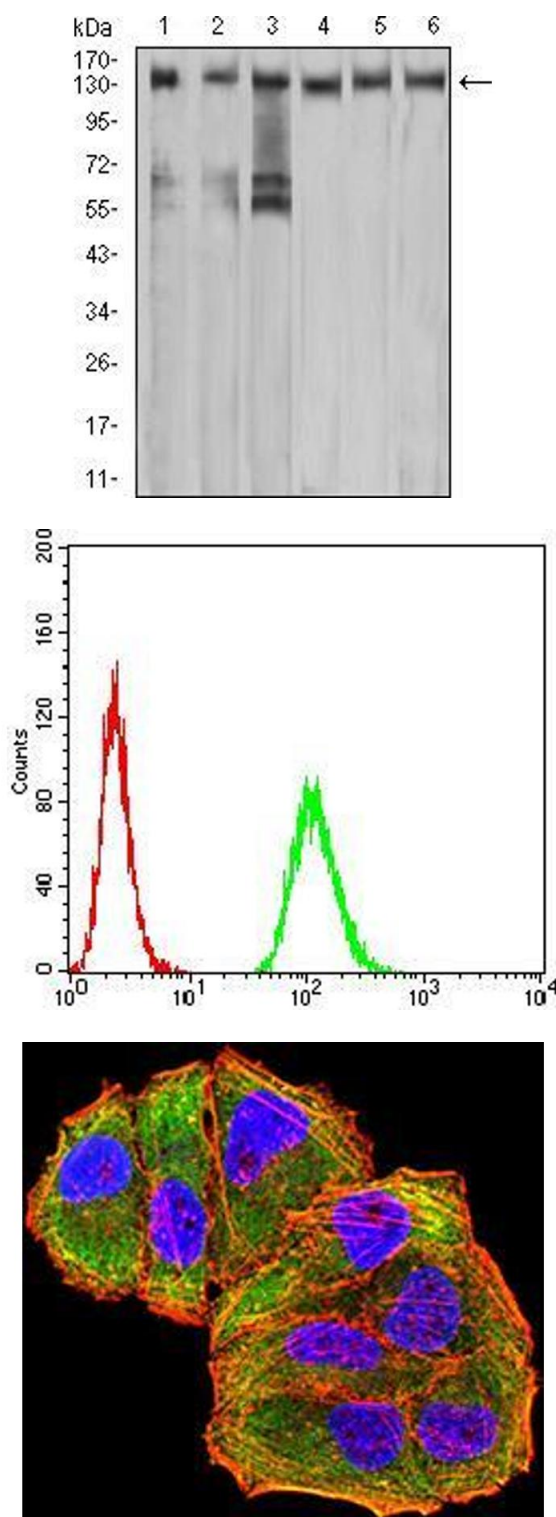
## Handling

Format: Liquid

Buffer: PBS with 0.05 % sodium azide

Storage: 4 °C, -20 °C

Storage Comment: 4°C, -20°C for long term storage



### Western Blotting

**Image 1.** Western blot analysis using MET mouse mAb against A549 (1), COS7 (2), Hela (3), HEK293 (4), HepG2 (5), and A431 (6) cell lysate.

### Flow Cytometry

**Image 2.** Flow cytometric analysis of MCF-7 cells using MET mouse mAb (green) and negative control (red).

### Immunocytochemistry

**Image 3.** Immunofluorescence analysis of Hela cells using MET mouse mAb (green). Blue: DRAQ5 fluorescent DNA dye. Red: Actin filaments have been labeled with Alexa Fluor-555 phalloidin. Secondary antibody from Fisher

Please check the [product details page](#) for more images. Overall 7 images are available for ABIN5542707.