

Datasheet for ABIN5542712  
**anti-CBX5 antibody (AA 1-191)**



[Go to Product page](#)

7 Images

## Overview

Quantity:	100 µL
Target:	CBX5
Binding Specificity:	AA 1-191
Reactivity:	Human
Host:	Mouse
Clonality:	Monoclonal
Conjugate:	This CBX5 antibody is un-conjugated
Application:	Western Blotting (WB), ELISA, Immunocytochemistry (ICC), Flow Cytometry (FACS)

## Product Details

Purpose:	CBX5 Antibody
Immunogen:	Purified recombinant fragment of human CBX5 (AA:1-191) expressed in E. Coli.
Clone:	3A11F8
Isotype:	IgG1
Purification:	Purified antibody

## Target Details

Target:	CBX5
Alternative Name:	CBX5 ( <a href="#">CBX5 Products</a> )
Background:	Description: This gene encodes a highly conserved nonhistone protein, which is a member of

## Target Details

---

the heterochromatin protein family. The protein is enriched in the heterochromatin and associated with centromeres. The protein has a single N-terminal chromodomain which can bind to histone proteins via methylated lysine residues, and a C-terminal chromo shadow-domain (CSD) which is responsible for the homodimerization and interaction with a number of chromatin-associated nonhistone proteins. The encoded product is involved in the formation of functional kinetochore through interaction with essential kinetochore proteins. The gene has a pseudogene located on chromosome 3. Multiple alternatively spliced variants, encoding the same protein, have been identified.

Aliases: HP1, HP1A, HEL25

---

Molecular Weight: 22.2kDa

---

Gene ID: 23468

---

HGNC: 23468

---

UniProt: [P45973](#)

## Application Details

---

Application Notes: ELISA: 1/10000  
FCM: 1/200 - 1/400  
ICC: 1/200 - 1/1000

---

Restrictions: For Research Use only

## Handling

---

Format: Liquid

---

Buffer: Purified antibody in PBS with 0.05 % sodium azide.

---

Preservative: Sodium azide

---

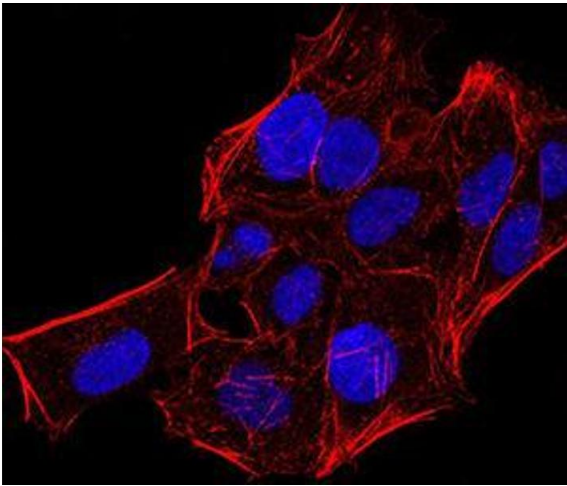
Precaution of Use: This product contains Sodium azide: a POISONOUS AND HAZARDOUS SUBSTANCE which should be handled by trained staff only.

---

Storage: 4 °C,-20 °C

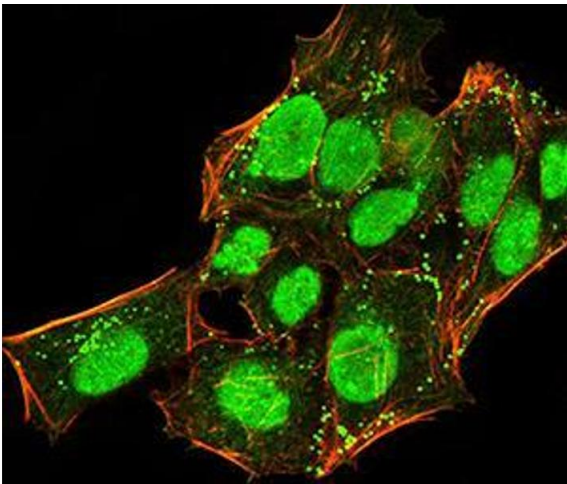
---

Storage Comment: Store at 4°C short term. Aliquot and store at -20°C long term. Avoid freeze/thaw cycles.



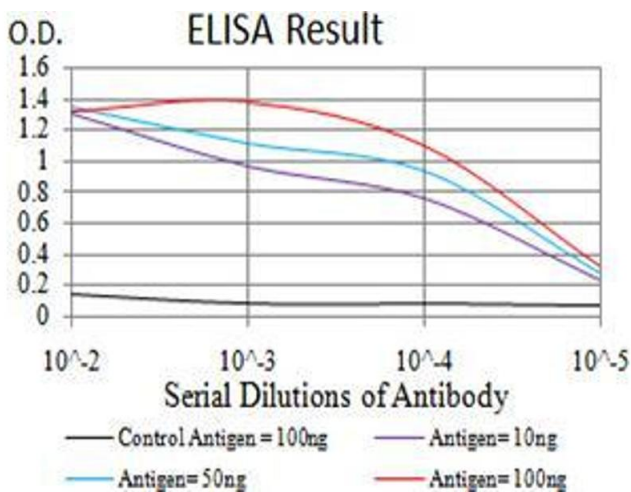
### Immunofluorescence

**Image 1.** Immunofluorescence analysis of HeLa cells using CBX5 mouse mAb. Blue: DRAQ5 fluorescent DNA dye. Red: Actin filaments have been labeled with Alexa Fluor- 555 phalloidin.



### Immunofluorescence

**Image 2.** Immunofluorescence analysis of HeLa cells using CBX5 mouse mAb (green). Blue: DRAQ5 fluorescent DNA dye. Red: Actin filaments have been labeled with Alexa Fluor- 555 phalloidin. Secondary antibody from Fisher (Cat#: 35503)



### ELISA

**Image 3.** Black line: Control Antigen (100 ng), Purple line: Antigen(10 ng), Blue line: Antigen (50 ng), Red line: Antigen (100 ng),

Please check the [product details page](#) for more images. Overall 7 images are available for ABIN5542712.