



Datasheet for ABIN5551132
anti-MAP1LC3A antibody



[Go to Product page](#)

6 Images

Overview

Quantity:	200 µL
Target:	MAP1LC3A
Reactivity:	Human, Mouse, Rat
Host:	Mouse
Clonality:	Monoclonal
Conjugate:	This MAP1LC3A antibody is un-conjugated
Application:	Western Blotting (WB), Immunofluorescence (IF), Immunohistochemistry (Paraffin-embedded Sections) (IHC (p)), Enzyme Immunoassay (EIA)

Product Details

Immunogen:	Full length recombinant protein of Human LC3.
Clone:	166AT1234
Isotype:	IgG1
Cross-Reactivity (Details):	Species reactivity (tested):Human, Mouse, Rat.
Purification:	Protein G Chromatography, eluted with high and low pH buffers and neutralized immediately, followed by dialysis against PBS

Target Details

Target:	MAP1LC3A
Alternative Name:	LC3 (MAP1LC3A Products)

Target Details

Background: MAP1A and MAP1B are microtubule-associated proteins which mediate the physical interactions between microtubules and components of the cytoskeleton. MAP1A and MAP1B each consist of a heavy chain subunit and multiple light chain subunits. The protein encoded by this gene is one of the light chain subunits and can associate with either MAP1A or MAP1B. Two transcript variants encoding different isoforms have been found for this gene. Synonyms: Autophagy-related protein LC3 A, Autophagy-related ubiquitin-like modifier LC3 A, LC3A, MAP1 light chain 3-like protein 1, MAP1A / 1B light chain 3 A, MAP1A/1B light chain 3 A, MAP1A/MAP1B LC3 A, MAP1LC3A, Microtubule-associated protein 1 light chain 3 alpha, Microtubule-associated proteins 1A/1B light chain 3A

Molecular Weight: 14272 Da

NCBI Accession: [NM_032514](#)

UniProt: [Q9H492](#)

Pathways: [Autophagy](#)

Application Details

Application Notes: Optimal working dilution should be determined by the investigator.

Restrictions: For Research Use only

Handling

Format: Liquid

Concentration: 0.25 mg/mL

Buffer: PBS containing 0.09 % (W/V) Sodium Azide as preservative

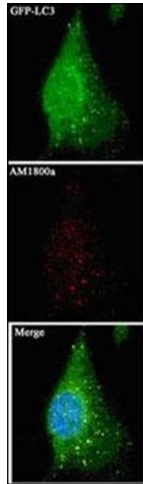
Preservative: Sodium azide

Precaution of Use: This product contains sodium azide: a POISONOUS AND HAZARDOUS SUBSTANCE which should be handled by trained staff only.

Handling Advice: Avoid repeated freezing and thawing.

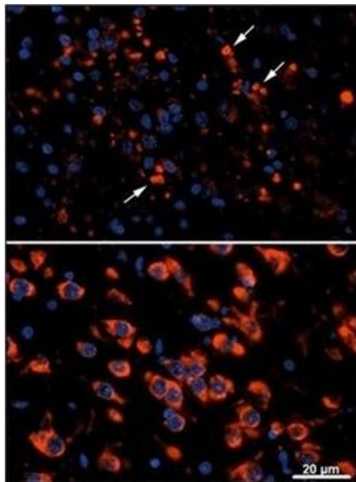
Storage: 4 °C/-20 °C

Storage Comment: Store undiluted at 2-8 °C for one month or (in aliquots) at -20 °C for longer.



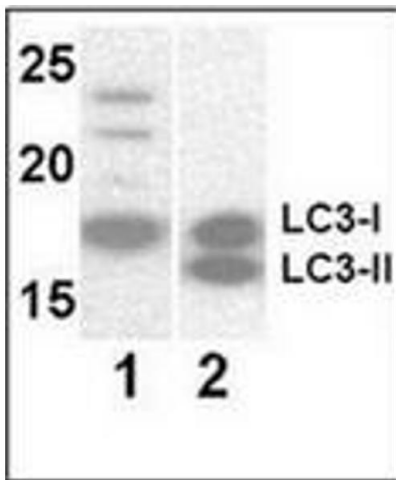
Immunofluorescence

Image 1.



Immunofluorescence

Image 2.



Western Blotting

Image 3.

Please check the [product details page](#) for more images. Overall 6 images are available for ABIN5551132.