

Datasheet for ABIN5551992

anti-SLC29A1 antibody (Middle Region)**2** Images**1** Publication[Go to Product page](#)

Overview

Quantity:	200 µL
Target:	SLC29A1
Binding Specificity:	Middle Region
Reactivity:	Human
Host:	Rabbit
Clonality:	Polyclonal
Conjugate:	This SLC29A1 antibody is un-conjugated
Application:	Western Blotting (WB), Immunohistochemistry (Paraffin-embedded Sections) (IHC (p)), Enzyme Immunoassay (EIA)

Product Details

Immunogen:	This antibody is generated from rabbits immunized with a KLH conjugated synthetic peptide selected from the Center region of human ENT1 (Slc29a1).
Isotype:	Ig Fraction
Specificity:	This antibody is specific to ENT1 (Center).
Purification:	Protein A Chromatography, eluted with high and low pH buffers and neutralized immediately, followed by dialysis against PBS.

Target Details

Target:	SLC29A1
Alternative Name:	SLC29A1 / ENT1 (SLC29A1 Products)

Target Details

Background:	ENT1 is a member of the equilibrative nucleoside transporter family. It is a transmembrane glycoprotein that localizes to the plasma and mitochondrial membranes and mediates the cellular uptake of nucleosides from the surrounding medium. The protein is categorized as an equilibrative (as opposed to concentrative) transporter that is sensitive to inhibition by nitrobenzylthioinosine (NBMPR). Nucleoside transporters are required for nucleotide synthesis in cells that lack de novo nucleoside synthesis pathways, and are also necessary for the uptake of cytotoxic nucleosides used for cancer and viral chemotherapies. Synonyms: Equilibrative nucleoside transporter 1, Solute carrier family 29 member 1
Gene ID:	2030, 9606
UniProt:	Q99808
Pathways:	Carbohydrate Homeostasis , Synaptic Membrane

Application Details

Application Notes:	ELISA: 1/1,000. Western Blot: 1-50-1/100. Immunohistochemistry: 1/10-1/50. Other applications not tested. Optimal dilutions are dependent on conditions and should be determined by the user.
Restrictions:	For Research Use only

Handling

Format:	Liquid
Concentration:	0.25 mg/mL
Buffer:	PBS containing 0.09 % (W/V) Sodium Azide as preservative.
Preservative:	Sodium azide
Precaution of Use:	This product contains sodium azide: a POISONOUS AND HAZARDOUS SUBSTANCE which should be handled by trained staff only.
Handling Advice:	Avoid repeated freezing and thawing.
Storage:	4 °C/-20 °C
Storage Comment:	Store the antibody undiluted at 2-8 °C for one month or (in aliquots) at -20 °C for longer.

Publications

Product cited in:	Wang, Word, Lyn-Cook: "Enhanced efficacy of gemcitabine by indole-3-carbinol in pancreatic
-------------------	--

cell lines: the role of human equilibrative nucleoside transporter 1." in: **Anticancer research**, Vol. 31, Issue 10, pp. 3171-80, (2011) ([PubMed](#)).

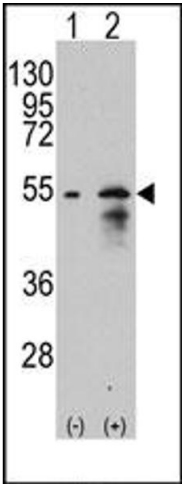


Image 1.

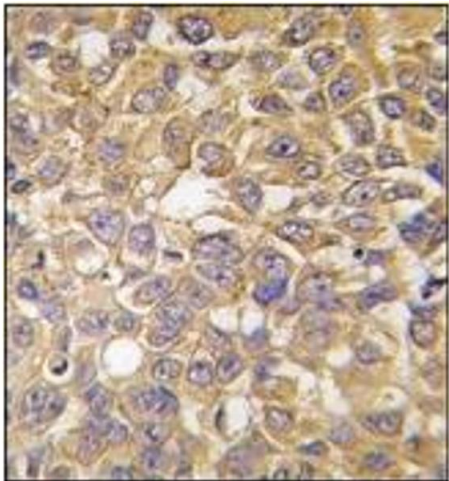


Image 2.