

Datasheet for ABIN5557281
anti-14-3-3 gamma antibody



[Go to Product page](#)

1 Image

Overview

Quantity:	100 µL
Target:	14-3-3 gamma (YWHAG1)
Reactivity:	Human
Host:	Rabbit
Clonality:	Monoclonal
Conjugate:	This 14-3-3 gamma antibody is un-conjugated
Application:	Western Blotting (WB)

Product Details

Immunogen:	Recombinant human 14-3-3 gamma protein, full length.
Clone:	1F6
Isotype:	IgG
Purification:	Purified by Protein A.

Target Details

Target:	14-3-3 gamma (YWHAG1)
Alternative Name:	14-3-3 gamma (YWHAG1 Products)
Background:	Adapter protein implicated in the regulation of a large spectrum of both general and specialized signaling pathways. Binds to a large number of partners, usually by recognition of a phosphoserine or phosphothreonine motif. Binding generally results in the modulation of the activity of the binding partner.

Target Details

	Synonyms: 14-3-3 protein gamma, YWHAG
Gene ID:	7532
UniProt:	P61981
Pathways:	Myometrial Relaxation and Contraction, M Phase

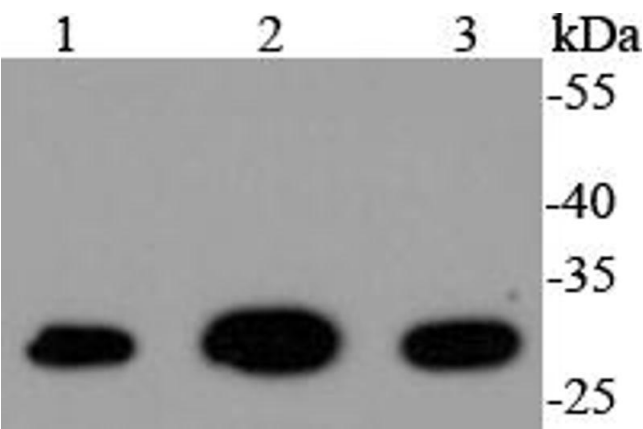
Application Details

Application Notes:	WB 1:1000-2000
Restrictions:	For Research Use only

Handling

Format:	Liquid
Concentration:	1 µg/µL
Buffer:	Aqueous buffered solution containing 1xTBS (pH 7.4), 1 % BSA, 40 %Glycerol and 0.05 % Sodium Azide.
Storage:	-20 °C
Storage Comment:	Store at -20°C
Expiry Date:	12 months

Images



Western Blotting

Image 1. Lane 1: 293T, Lane 2: A431, Lane 3: Hela lysates probed with 14-3-3 gamma (1F6) Monoclonal Antibody at 1:1000 overnight at 4°C. Followed by a conjugated secondary antibody.