

Datasheet for ABIN5557289
anti-c-MYC antibody (pSer62)



[Go to Product page](#)

2 Images

Overview

Quantity:	100 µL
Target:	c-MYC (MYC)
Binding Specificity:	pSer62
Reactivity:	Human, Rat
Host:	Rabbit
Clonality:	Monoclonal
Conjugate:	This c-MYC antibody is un-conjugated
Application:	Western Blotting (WB), Immunohistochemistry (Paraffin-embedded Sections) (IHC (p)), Immunofluorescence (Cultured Cells) (IF (cc))

Product Details

Immunogen:	Synthetic peptide derived from human c-Myc(S62), around 50-100aa (phospho S62).
Clone:	1A7
Isotype:	IgG
Cross-Reactivity:	Human, Rat
Purification:	Purified by Protein A.

Target Details

Target:	c-MYC (MYC)
Alternative Name:	c-Myc (MYC Products)

Target Details

Background:	<p>Synonyms: Avian myelocytomatosis viral oncogene homolog, bHLHe39, c Myc, c Myc Epitope Tag, c Myc Tag, Cellular myelocytomatosis oncogene, MGC105490, MRTL, Myc Epitope Tag, Myc protein, Myc proto oncogene protein, Myc proto-oncogene protein, Myc-related translation/localization regulatory factor, Myc2, myca, Myelocytomatosis oncogene a, Myelocytomatosis oncogene, Niard, Nird, Oncogene Myc, Protooncogene homologous to myelocytomatosis virus, RNCMYC, Transcription factor p64, Transcriptional regulator Myc-A, V-Myc avian myelocytomatosis viral oncogene homolog, v-myc myelocytomatosis viral oncogene homolog avian, zc-myc.</p> <p>Background: Epitope tags are useful for the labeling and detection of proteins using immunoblotting, immunoprecipitation and immunostaining techniques. Due to their small size, they are unlikely to affect the tagged protein's biochemical properties. The Myc epitope tag is widely used to detect expression of recombinant proteins in bacteria, yeast, insect and mammalian cell systems. The c-Myc protein is a transcription factor, which is encoded by the c-Myc gene on human chromosome 8q24. c-Myc is commonly activated in a variety of tumor cells and plays an important role in cellular proliferation, differentiation, apoptosis and cell cycle progression. The phosphorylation of c-Myc has been investigated and previous studies have suggested a functional association between phosphorylation at Thr58/Ser62 by glycogen synthase kinase 3, cyclin dependent kinase, ERK2 and C-Jun N terminal Kinase (JNK) in cell proliferation and cell cycle regulation. Studies also have shown that c-Myc is essential for tumor cell development in vasculogenesis and angiogenesis that distribute blood throughout the cells, and which brought extensive attention in the development of new therapeutic approach for cancer treatment.</p>
-------------	--

Gene ID:	4609
UniProt:	P01106
Pathways:	p53 Signaling , Cell Division Cycle , Sensory Perception of Sound , Transition Metal Ion Homeostasis , Mitotic G1-G1/S Phases , Positive Regulation of Endopeptidase Activity , Regulation of Carbohydrate Metabolic Process , Positive Regulation of Response to DNA Damage Stimulus , Warburg Effect

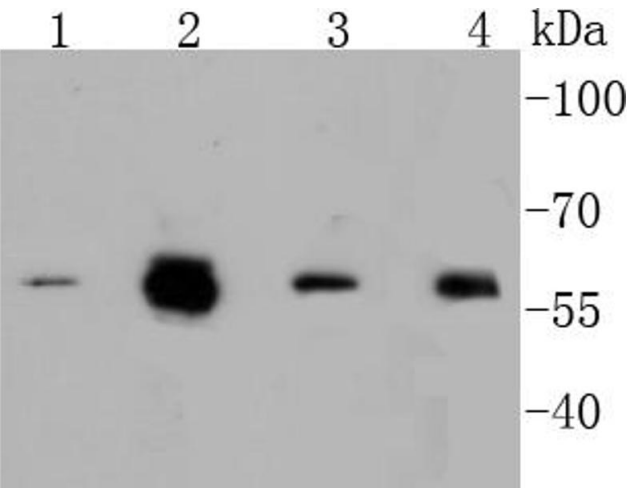
Application Details

Application Notes:	WB 1:300-5000 IHC-P 1:200-400 IF(ICC) 1:50-200
Restrictions:	For Research Use only

Handling

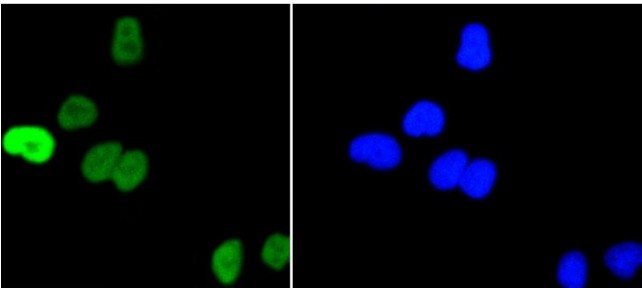
Format:	Liquid
Concentration:	1 µg/µL
Buffer:	Aqueous buffered solution containing 1xTBS (pH 7.4), 1 % BSA, 40 %Glycerol and 0.05 % Sodium Azide.
Preservative:	ProClin
Precaution of Use:	This product contains ProClin: a POISONOUS AND HAZARDOUS SUBSTANCE, which should be handled by trained staff only.
Storage:	4 °C,-20 °C
Storage Comment:	Shipped at 4°C. Store at -20°C for one year. Avoid repeated freeze/thaw cycles.
Expiry Date:	12 months

Images



Western Blotting

Image 1. Lane 1: A549, Lane 2: HCT116, Lane 3: HeLa, Lane 4: HepG2 cell lysates, probed with c-Myc(S62) (1A7) Monoclonal Antibody at 1:1000 overnight at 4°C. Followed by a conjugated secondary antibody.



Immunofluorescence (Cultured Cells)

Image 2. HeLa cells were stained with c-Myc(S62) (1A7) Monoclonal Antibody (b at [1:200] incubated overnight at 4C, followed by secondary antibody incubation, DAPI staining of the nuclei and detection.