



[Go to Product page](#)

Datasheet for ABIN5557292

anti-COL10 antibody

1 Image

Overview

Quantity:	100 µL
Target:	COL10
Reactivity:	Human
Host:	Rabbit
Clonality:	Monoclonal
Conjugate:	This COL10 antibody is un-conjugated
Application:	Western Blotting (WB), Immunofluorescence (Cultured Cells) (IF (cc))

Product Details

Immunogen:	KLH conjugated synthetic peptide derived from human COL10A1
Clone:	1H8
Isotype:	IgG
Cross-Reactivity:	Human
Purification:	Purified by Protein A.

Target Details

Target:	COL10
Alternative Name:	Collagen 10 (COL10 Products)
Background:	Synonyms: Collagen alpha-1(X) chain, COL10A1, Background: Type X collagen is a product of hypertrophic chondrocytes and has been localized

Target Details

to presumptive mineralization zones of hyaline cartilage.

Gene ID: 1300

UniProt: [A1L4P2](#)

Application Details

Application Notes: WB 1:300-5000
IF(ICC) 1:50-200

Restrictions: For Research Use only

Handling

Format: Liquid

Concentration: 1 µg/µL

Buffer: Aqueous buffered solution containing 1xTBS (pH 7.4), 1 % BSA, 40 %Glycerol and 0.05 % Sodium Azide.

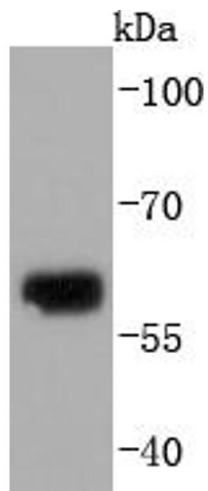
Preservative: ProClin

Precaution of Use: This product contains ProClin: a POISONOUS AND HAZARDOUS SUBSTANCE, which should be handled by trained staff only.

Storage: 4 °C,-20 °C

Storage Comment: Shipped at 4°C. Store at -20°C for one year. Avoid repeated freeze/thaw cycles.

Expiry Date: 12 months



Western Blotting

Image 1. Human skin ysates probed with Collagen X (1H8) Monoclonal Antibody at 1:1000 overnight at 4°C. Followed by a conjugated secondary antibody .