

Datasheet for ABIN5557296

**anti-Cyclin E1 antibody (pThr77)****2** Images[Go to Product page](#)

## Overview

Quantity:	100 µL
Target:	Cyclin E1 (CCNE1)
Binding Specificity:	pThr77
Reactivity:	Human
Host:	Rabbit
Clonality:	Monoclonal
Conjugate:	This Cyclin E1 antibody is un-conjugated
Application:	Western Blotting (WB), Immunofluorescence (Cultured Cells) (IF (cc))

## Product Details

Immunogen:	Synthetic peptide derived from human Cyclin E1(T77), around 50-100aa (phospho T77).
Clone:	4G10
Isotype:	IgG
Cross-Reactivity:	Human
Purification:	Purified by Protein A.

## Target Details

Target:	Cyclin E1 (CCNE1)
Alternative Name:	Cyclin E1 ( <a href="#">CCNE1 Products</a> )
Background:	Synonyms: Cyclin E1 phospho T77, p-Cyclin E1 phospho T77, Cyclin E1 Thr77, CCNE 1,

## Target Details

CCNE,CCNE1,Cyclin E1 antibody Cyclin Es,Cyclin Et,CyclinE, G1/S specic cyclin E.

Background: Cyclin E is a regulatory subunit of Cdk2 and controls G1 / S transition during the mammalian cell cycle. Multiple isoforms of Cyclin E are only expressed in tumors but not in normal tissue, suggesting a post transcriptional regulation of Cyclin E. In vitro analyses indicated that these truncated variant isoforms of Cyclin E are able to phosphorylate histone H1. Alterations in the Cyclin E protein have been implicated as indicators of worse prognosis in various cancers.

Gene ID: 898

UniProt: [P24864](#)

Pathways: [Cell Division Cycle](#), [Intracellular Steroid Hormone Receptor Signaling Pathway](#), [Nuclear Hormone Receptor Binding](#), [Mitotic G1-G1/S Phases](#)

## Application Details

Application Notes: WB 1:300-5000  
IF(ICC) 1:50-200

Restrictions: For Research Use only

## Handling

Format: Liquid

Concentration: 1 µg/µL

Buffer: Aqueous buffered solution containing 1xTBS ( pH 7.4), 1 % BSA, 40 %Glycerol and 0.05 % Sodium Azide.

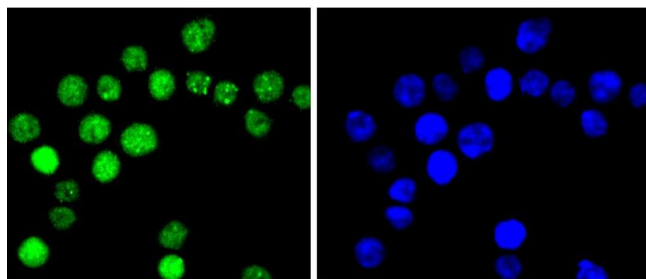
Preservative: ProClin

Precaution of Use: This product contains ProClin: a POISONOUS AND HAZARDOUS SUBSTANCE, which should be handled by trained staff only.

Storage: 4 °C,-20 °C

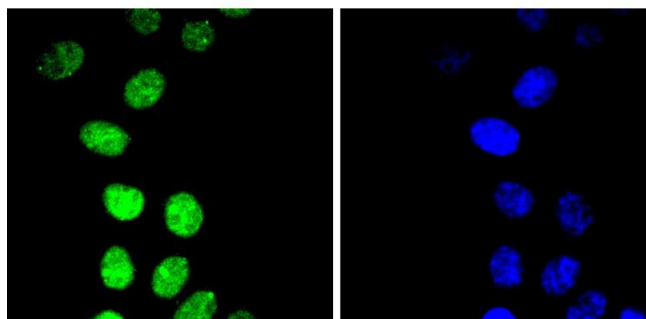
Storage Comment: Shipped at 4°C. Store at -20°C for one year. Avoid repeated freeze/thaw cycles.

Expiry Date: 12 months



### Immunofluorescence (Cultured Cells)

**Image 1.** SW480 cells were stained with Cyclin E1(T77) (4G10 ) Monoclonal Antibody at [1:200] incubated overnight at 4C, followed by secondary antibody incubation, DAPI staining of the nuclei and detection.



### Immunofluorescence (Cultured Cells)

**Image 2.** HepG2 cells were stained with Cyclin E1(T77) (4G10 ) Monoclonal Antibody at [1:200] incubated overnight at 4C, followed by secondary antibody incubation, DAPI staining of the nuclei and detection.