

Datasheet for ABIN5557330  
**anti-Phospholipase C gamma 1 antibody**



[Go to Product page](#)

1 Image

## Overview

Quantity:	100 µL
Target:	Phospholipase C gamma 1 (PLCG1)
Reactivity:	Human
Host:	Rabbit
Clonality:	Monoclonal
Conjugate:	This Phospholipase C gamma 1 antibody is un-conjugated
Application:	Western Blotting (WB)

## Product Details

Immunogen:	Recombinant human Phospholipase C gamma 1 protein, around C-terminal 150aa.
Clone:	85F11
Isotype:	IgG
Cross-Reactivity:	Human
Purification:	Purified by Protein A.

## Target Details

Target:	Phospholipase C gamma 1 (PLCG1)
Alternative Name:	Phospholipase C gamma 1 ( <a href="#">PLCG1 Products</a> )
Background:	Synonyms: PLC1, NCKAP3, PLC-II, PLC148, PLCgamma1, 1-phosphatidylinositol 4,5-bisphosphate phosphodiesterase gamma-1, PLC-148, Phosphoinositide phospholipase C-

## Target Details

---

gamma-1, Phospholipase C-II, Phospholipase C-gamma-1, PLC-gamma-1, PLCG1

Background: Mediates the production of the second messenger molecules diacylglycerol (DAG) and inositol 1,4,5-trisphosphate (IP3). Plays an important role in the regulation of intracellular signaling cascades. Becomes activated in response to ligand-mediated activation of receptor-type tyrosine kinases, such as PDGFRA, PDGFRB, FGFR1, FGFR2, FGFR3 and FGFR4. Plays a role in actin reorganization and cell migration.

---

Gene ID: 5335

---

UniProt: [P19174](#)

---

Pathways: [RTK Signaling](#), [WNT Signaling](#), [TCR Signaling](#), [Fc-epsilon Receptor Signaling Pathway](#), [EGFR Signaling Pathway](#), [Neurotrophin Signaling Pathway](#), [Thyroid Hormone Synthesis](#), [Inositol Metabolic Process](#), [Myometrial Relaxation and Contraction](#), [Regulation of Muscle Cell Differentiation](#), [Regulation of G-Protein Coupled Receptor Protein Signaling](#), [Skeletal Muscle Fiber Development](#), [G-protein mediated Events](#), [Signaling Events mediated by VEGFR1 and VEGFR2](#), [Interaction of EGFR with phospholipase C-gamma](#), [VEGFR1 Specific Signals](#), [VEGF Signaling](#)

## Application Details

---

Application Notes: IF(ICC) 1:50-200

---

Restrictions: For Research Use only

## Handling

---

Format: Liquid

---

Concentration: 1 µg/µL

---

Buffer: Aqueous buffered solution containing 1xTBS ( pH 7.4), 1 % BSA, 40 %Glycerol and 0.05 % Sodium Azide.

---

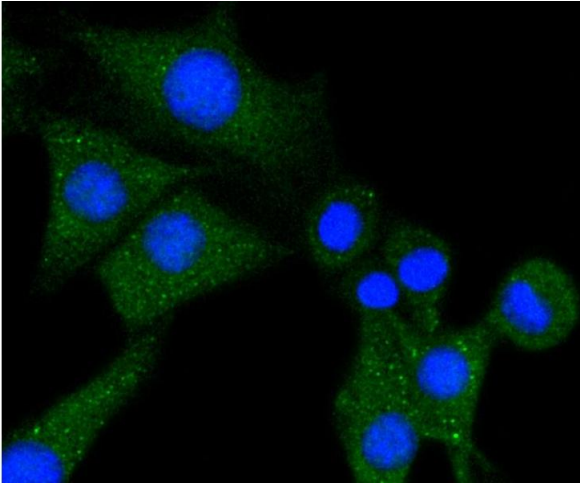
Storage: -20 °C

---

Storage Comment: Store at -20°C for 12 months.

---

Expiry Date: 12 months



#### Immunofluorescence (Cultured Cells)

**Image 1.** SHG-44 cells were stained with Phospholipase C gamma 1 (85F11) Monoclonal Antibody at [1:200] incubated overnight at 4C, followed by secondary antibody incubation, DAPI staining of the nuclei and detection.