



[Go to Product page](#)

Datasheet for ABIN5557346

anti-ALAS1 antibody

2 Images

Overview

Quantity:	100 µL
Target:	ALAS1
Reactivity:	Human, Mouse
Host:	Rabbit
Clonality:	Monoclonal
Conjugate:	This ALAS1 antibody is un-conjugated
Application:	Western Blotting (WB), Immunofluorescence (Cultured Cells) (IF (cc))

Product Details

Immunogen:	Recombinant human Alas1 protein, around C-terminal 200aa.
Clone:	1G11
Isotype:	IgG
Cross-Reactivity:	Human, Mouse
Purification:	Purified by Protein A.

Target Details

Target:	ALAS1
Alternative Name:	Alas1 (ALAS1 Products)
Background:	Synonyms: 5-aminolevulinate synthase, nonspecific, mitochondrial, ALAS1, 5-aminolevulinic acid synthase 1, Delta-ALA synthase 1, Delta-aminolevulinate synthase 1, ALAS1, ALAS3,

Target Details

ALASH, OK/SW-cl.121

Background: This gene encodes the mitochondrial enzyme which catalyzes the rate-limiting step in heme (iron-protoporphyrin) biosynthesis. The enzyme encoded by this gene is the housekeeping enzyme, a separate gene encodes a form of the enzyme that is specific for erythroid tissue. The level of the mature encoded protein is regulated by heme: high levels of heme down-regulate the mature enzyme in mitochondria while low heme levels up-regulate. A pseudogene of this gene is located on chromosome 12. Alternative splicing results in multiple transcript variants encoding different isoforms. [provided by RefSeq, Jan 2015]

Gene ID: 211

UniProt: [P13196](#)

Pathways: [Regulation of Lipid Metabolism by PPARalpha](#)

Application Details

Application Notes: WB 1:300-5000
IF(ICC) 1:50-200

Restrictions: For Research Use only

Handling

Format: Liquid

Concentration: 1 µg/µL

Buffer: Aqueous buffered solution containing 1xTBS (pH 7.4), 1 % BSA, 40 % Glycerol and 0.05 % Sodium Azide.

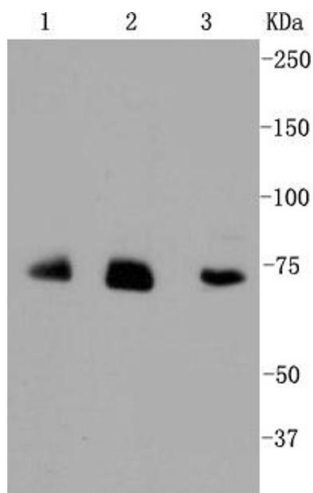
Preservative: ProClin

Precaution of Use: This product contains ProClin: a POISONOUS AND HAZARDOUS SUBSTANCE, which should be handled by trained staff only.

Storage: 4 °C, -20 °C

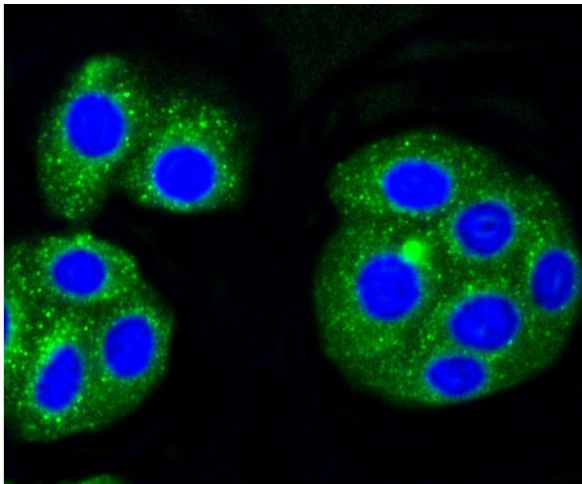
Storage Comment: Shipped at 4°C. Store at -20°C for one year. Avoid repeated freeze/thaw cycles.

Expiry Date: 12 months



Western Blotting

Image 1. Lane 1: JAR lysates, Lane 2: HUVEC lysates, Lane 3: HeLa lysates probed with Alas1 (1G11) Monoclonal Antibody at 1:1000.



Immunofluorescence (Cultured Cells)

Image 2. HepG2 cells were stained with Alas1 (1G11) Monoclonal Antibody at 1:200 in PBS and incubated for overnight at 4C, followed by secondary antibody incubation, DAPI staining of the nuclei and detection