

Datasheet for ABIN5557369

anti-Cyclin B2 antibody

4 Images

[Go to Product page](#)

Overview

| | |
|--------------|---|
| Quantity: | 100 µL |
| Target: | Cyclin B2 (CCNB2) |
| Reactivity: | Human, Mouse, Rat |
| Host: | Rabbit |
| Clonality: | Monoclonal |
| Conjugate: | This Cyclin B2 antibody is un-conjugated |
| Application: | Western Blotting (WB), Immunofluorescence (Cultured Cells) (IF (cc)), Immunohistochemistry (Paraffin-embedded Sections) (IHC (p)) |

Product Details

| | |
|-------------------|---|
| Immunogen: | Recombinant human Cyclin B2 protein, around N-terminal 150aa. |
| Clone: | 2F4 |
| Isotype: | IgG |
| Cross-Reactivity: | Human, Mouse, Rat |
| Purification: | Purified by Protein A. |

Target Details

| | |
|-------------------|--|
| Target: | Cyclin B2 (CCNB2) |
| Alternative Name: | Cyclin B2 (CCNB2 Products) |
| Background: | Synonyms: HsT17299, G2/mitotic-specific cyclin-B2, CCNB2 |

Target Details

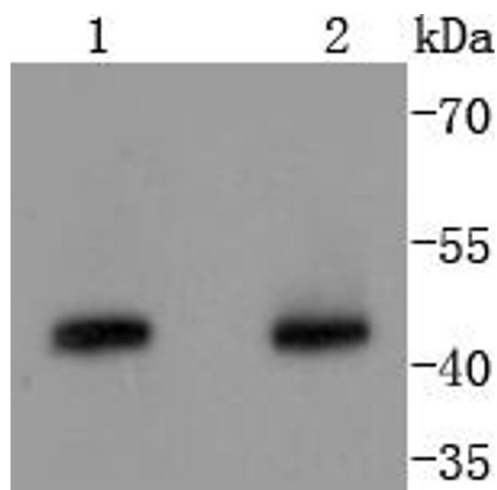
| | |
|-----------|---|
| | Background: Essential for the control of the cell cycle at the G2/M (mitosis) transition. |
| Gene ID: | 9133 |
| UniProt: | O95067 |
| Pathways: | Cell Division Cycle, M Phase |

Application Details

| | |
|--------------------|--|
| Application Notes: | WB 1:300-5000 IHC-P 1:200-400 IF(ICC) 1:50-200 |
| Restrictions: | For Research Use only |

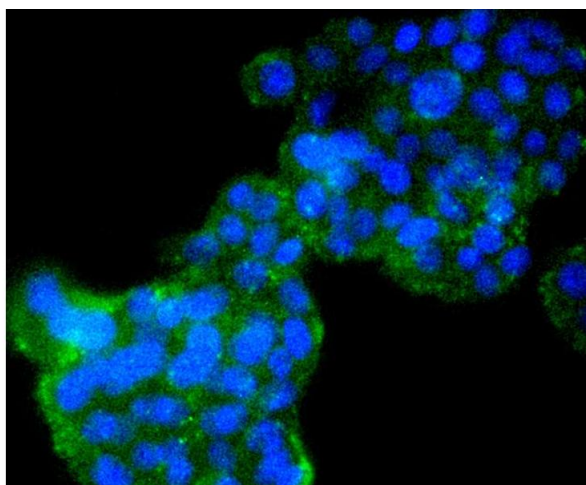
Handling

| | |
|--------------------|--|
| Format: | Liquid |
| Concentration: | 1 µg/µL |
| Buffer: | Aqueous buffered solution containing 1xTBS (pH 7.4), 1 % BSA, 40 %Glycerol and 0.05 % Sodium Azide. |
| Preservative: | ProClin |
| Precaution of Use: | This product contains ProClin: a POISONOUS AND HAZARDOUS SUBSTANCE, which should be handled by trained staff only. |
| Storage: | 4 °C,-20 °C |
| Storage Comment: | Shipped at 4°C. Store at -20°C for one year. Avoid repeated freeze/thaw cycles. |
| Expiry Date: | 12 months |



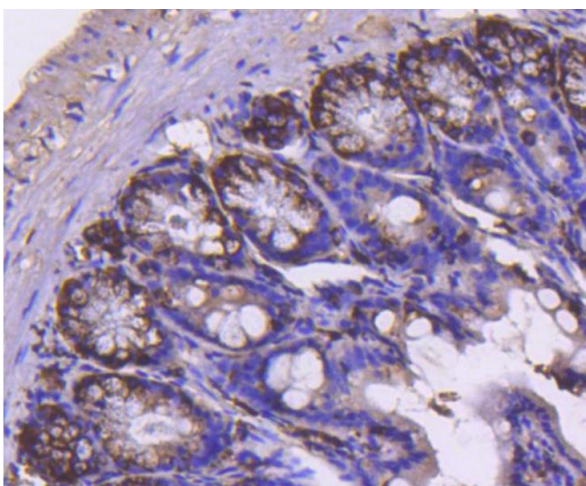
Western Blotting

Image 1. Lane 1: Hela, Lane 2: K562 lysates probed with Cyclin B2 (2F4) Monoclonal Antibody at 1:1000 overnight at 4°C. Followed by a conjugated secondary antibody.



Immunofluorescence (Cultured Cells)

Image 2. PC12 cells were stained with Cyclin B2 (2F4) Monoclonal Antibody at [1:200] incubated overnight at 4°C, followed by secondary antibody incubation, DAPI staining of the nuclei and detection.



Immunohistochemistry (Paraffin-embedded Sections)

Image 3. Paraformaldehyde-fixed, paraffin embedded mouse colon section, Antigen retrieval by boiling in sodium citrate buffer (pH6) for 15min, Block endogenous peroxidase by 3% hydrogen peroxide for 30 minutes, Blocking buffer (normal serum) at 37°C for 20min, Antibody incubation with Cyclin B2 (2F4) Monoclonal Antibody at 1:50 overnight at 4°C, followed by a conjugated secondary and DAB staining.

Please check the [product details page](#) for more images. Overall 4 images are available for ABIN5557369.