

Datasheet for ABIN5557380
anti-MAP3K13 antibody (AA 801-900)[Go to Product page](#)

2 Images

Overview

Quantity:	100 µL
Target:	MAP3K13
Binding Specificity:	AA 801-900
Reactivity:	Human, Mouse
Host:	Rabbit
Clonality:	Polyclonal
Conjugate:	This MAP3K13 antibody is un-conjugated
Application:	Western Blotting (WB), ELISA, Immunofluorescence (Cultured Cells) (IF (cc)), Immunofluorescence (Paraffin-embedded Sections) (IF (p)), Immunohistochemistry (Paraffin-embedded Sections) (IHC (p)), Immunocytochemistry (ICC), Immunohistochemistry (Frozen Sections) (IHC (fro))

Product Details

Immunogen:	KLH conjugated synthetic peptide derived from human MAP3K13
Isotype:	IgG
Cross-Reactivity:	Human, Mouse
Predicted Reactivity:	Cow
Purification:	Purified by Protein A.

Target Details

Target:	MAP3K13
---------	---------

Target Details

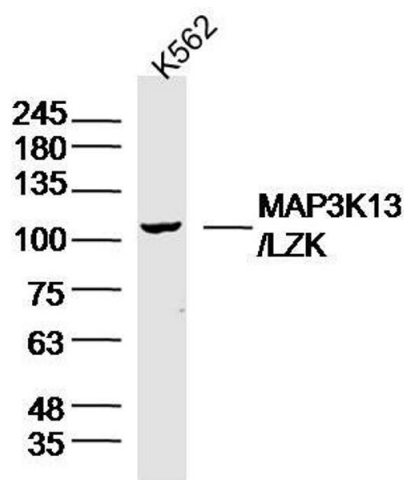
Alternative Name:	MAP3K13 (MAP3K13 Products)
Background:	<p>Synonyms: Mitogen-activated protein kinase kinase kinase 13, MAP3K13, Leucine zipper-bearing kinase, Mixed lineage kinase, MLK, LZK</p> <p>Background: Activates the JUN N-terminal pathway through activation of the MAP kinase kinase MAP2K7. Acts synergistically with PRDX3 to regulate the activation of NF-kappa-B in the cytosol. This activation is kinase-dependent and involves activating the IKK complex, the IKKKB-containing complex that phosphorylates inhibitors of NF-kappa-B.</p>
Gene ID:	9175
UniProt:	O43283
Pathways:	Signaling Events mediated by VEGFR1 and VEGFR2

Application Details

Application Notes:	WB 1:300-5000 ELISA 1:500-1000 IHC-P 1:200-400 IHC-F 1:100-500 IF(IHC-P) 1:50-200 IF(IHC-F) 1:50-200 IF(ICC) 1:50-200 ICC 1:100-500
Restrictions:	For Research Use only

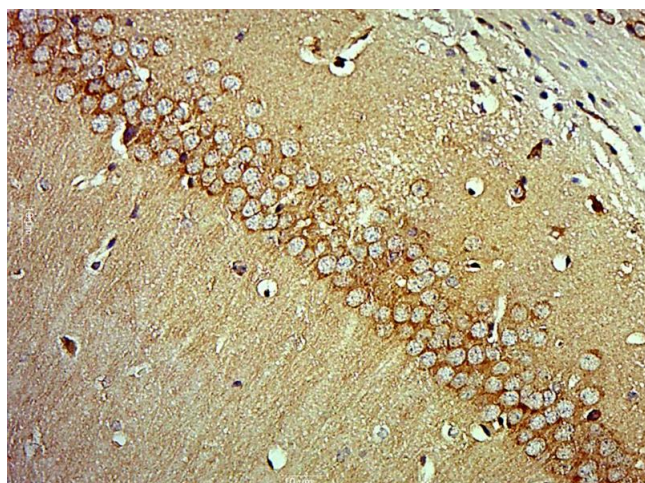
Handling

Format:	Liquid
Concentration:	1 µg/µL
Buffer:	0.01M TBS(pH 7.4) with 1 % BSA, 0.02 % Proclin300 and 50 % Glycerol.
Preservative:	ProClin
Precaution of Use:	This product contains ProClin: a POISONOUS AND HAZARDOUS SUBSTANCE, which should be handled by trained staff only.
Storage:	4 °C,-20 °C
Storage Comment:	Shipped at 4°C. Store at -20°C for one year. Avoid repeated freeze/thaw cycles.



Western Blotting

Image 1. K562 lysates probed with MAP3K13 Polyclonal Antibody, Unconjugated at 1:300 overnight at 4°C. Followed by a conjugated secondary antibody at 1:5000 for 90 min at 37°C.



Immunohistochemistry (Paraffin-embedded Sections)

Image 2. Paraformaldehyde-fixed, paraffin embedded mouse brain, Antigen retrieval by boiling in sodium citrate buffer (pH6) for 15min, Block endogenous peroxidase by 3% hydrogen peroxide for 30 minutes, Blocking buffer (normal goat serum) at 37°C for 20min, Antibody incubation with MAP3K13 Polyclonal Antibody at 1:400 overnight at 4°C, followed by a conjugated secondary and DAB staining.