

Datasheet for ABIN5557433

anti-CDK6 antibody

3 Images

[Go to Product page](#)

Overview

| | |
|--------------|-------------------------------------|
| Quantity: | 100 µL |
| Target: | CDK6 |
| Reactivity: | Human, Mouse, Rat |
| Host: | Rabbit |
| Clonality: | Monoclonal |
| Conjugate: | This CDK6 antibody is un-conjugated |
| Application: | Western Blotting (WB) |

Product Details

| | |
|-------------------|--|
| Immunogen: | Recombinant human Cdk6 protein, full length. |
| Clone: | 4F7 |
| Isotype: | IgG |
| Cross-Reactivity: | Human, Mouse, Rat |
| Purification: | Purified by Protein A. |

Target Details

| | |
|-------------------|--|
| Target: | CDK6 |
| Alternative Name: | Cdk6 (CDK6 Products) |
| Background: | Synonyms: MCPH12, PLSTIRE, Cyclin-dependent kinase 6, Cell division protein kinase 6, Serine/threonine-protein kinase PLSTIRE, CDK6, CDKN6 |

Target Details

Background: Serine/threonine-protein kinase involved in the control of the cell cycle and differentiation, promotes G1/S transition. Phosphorylates pRB/RB1 and NPM1. Interacts with D-type G1 cyclins during interphase at G1 to form a pRB/RB1 kinase and controls the entrance into the cell cycle. Involved in initiation and maintenance of cell cycle exit during cell differentiation, prevents cell proliferation and regulates negatively cell differentiation, but is required for the proliferation of specific cell types (e.g. erythroid and hematopoietic cells). Essential for cell proliferation within the dentate gyrus of the hippocampus and the subventricular zone of the lateral ventricles. Required during thymocyte development. Promotes the production of newborn neurons, probably by modulating G1 length. Promotes, at least in astrocytes, changes in patterns of gene expression, changes in the actin cytoskeleton including loss of stress fibers, and enhanced motility during cell differentiation. Prevents myeloid differentiation by interfering with RUNX1 and reducing its transcription transactivation activity, but promotes proliferation of normal myeloid progenitors. Delays senescence. Promotes the proliferation of beta-cells in pancreatic islets of Langerhans. May play a role in the centrosome organization during the cell cycle phases (PubMed:23918663).

Gene ID: 1021

UniProt: [Q00534](#)

Pathways: [Cell Division Cycle, Mitotic G1-G1/S Phases](#)

Application Details

Application Notes: WB 1:1000-2000

Restrictions: For Research Use only

Handling

Format: Liquid

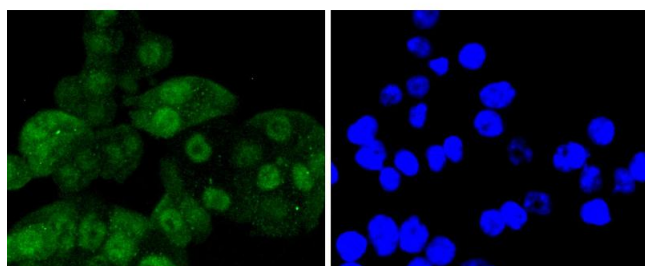
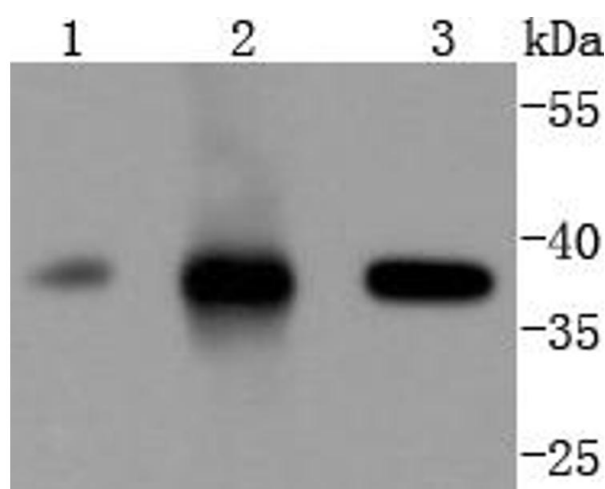
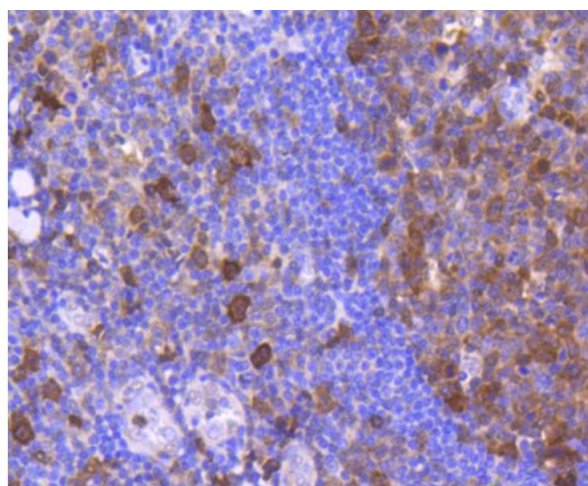
Concentration: 1 µg/µL

Buffer: Aqueous buffered solution containing 1xTBS (pH 7.4), 1 % BSA, 40 %Glycerol and 0.05 % Sodium Azide.

Storage: -20 °C

Storage Comment: Store at -20°C for 12 months.

Expiry Date: 12 months



Immunohistochemistry (Paraffin-embedded Sections)

Image 1. Paraformaldehyde-fixed, paraffin embedded human tonsil section, Antigen retrieval by boiling in sodium citrate buffer (pH6) for 15min, Block endogenous peroxidase by 3% hydrogen peroxide for 30 minutes, Blocking buffer (normal serum) at 37°C for 20min, Antibody incubation with Cdk6 (4F7) Monoclonal Antibody at 1:50 overnight at 4°C, followed by a conjugated secondary and DAB staining.

Western Blotting

Image 2. Lane 1: Jurkat, Lane 2: K562, Lane 3: Hela lysates probed with Cdk6 (4F7) Monoclonal Antibody at 1:1000 overnight at 4°C. Followed by a conjugated secondary antibody .

Immunofluorescence (Cultured Cells)

Image 3. SW480 cells were stained with Cdk6 (4F7) Monoclonal Antibody at [1:200] incubated overnight at 4C, followed by secondary antibody incubation, DAPI staining of the nuclei and detection.