

Datasheet for ABIN5557440

**anti-KRT16 antibody**[Go to Product page](#)

## 4 Images

## Overview

Quantity:	100 µL
Target:	KRT16
Reactivity:	Human, Mouse, Rat
Host:	Rabbit
Clonality:	Monoclonal
Conjugate:	This KRT16 antibody is un-conjugated
Application:	Western Blotting (WB), Immunohistochemistry (Paraffin-embedded Sections) (IHC (p)), Immunofluorescence (Cultured Cells) (IF (cc))

## Product Details

Immunogen:	Recombinant human Cytokeratin 16 protein, around N-terminal 100aa.
Clone:	1A4
Isotype:	IgG
Cross-Reactivity:	Human, Mouse, Rat
Purification:	Purified by Protein A.

## Target Details

Target:	KRT16
Alternative Name:	Cytokeratin 16 ( <a href="#">KRT16 Products</a> )
Background:	Synonyms: Keratin, type I cytoskeletal 16, KRT16

## Target Details

Background: Epidermis-specific type I keratin that plays a key role in skin. Acts as a regulator of innate immunity in response to skin barrier breach: required for some inflammatory checkpoint for the skin barrier maintenance.

Gene ID: 3868

UniProt: [P08779](#)

## Application Details

Application Notes: WB 1:300-5000  
IHC-P 1:200-400  
IF(ICC) 1:50-200

Restrictions: For Research Use only

## Handling

Format: Liquid

Concentration: 1 µg/µL

Buffer: Aqueous buffered solution containing 1xTBS ( pH 7.4), 1 % BSA, 40 %Glycerol and 0.05 % Sodium Azide.

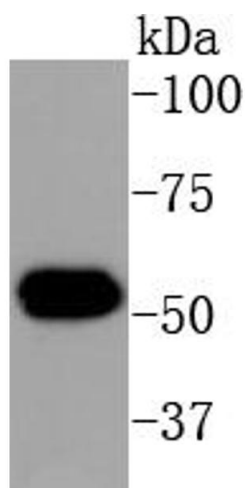
Preservative: ProClin

Precaution of Use: This product contains ProClin: a POISONOUS AND HAZARDOUS SUBSTANCE, which should be handled by trained staff only.

Storage: 4 °C,-20 °C

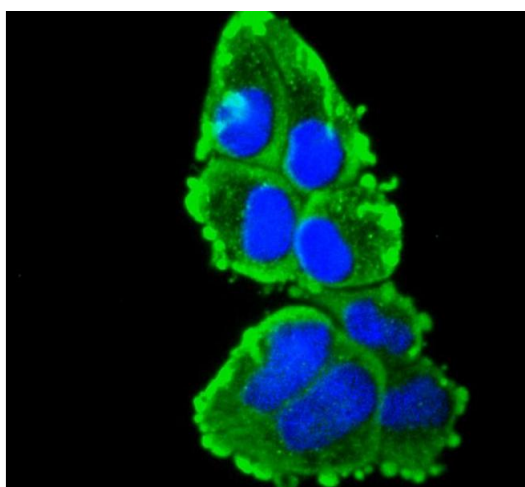
Storage Comment: Shipped at 4°C. Store at -20°C for one year. Avoid repeated freeze/thaw cycles.

Expiry Date: 12 months



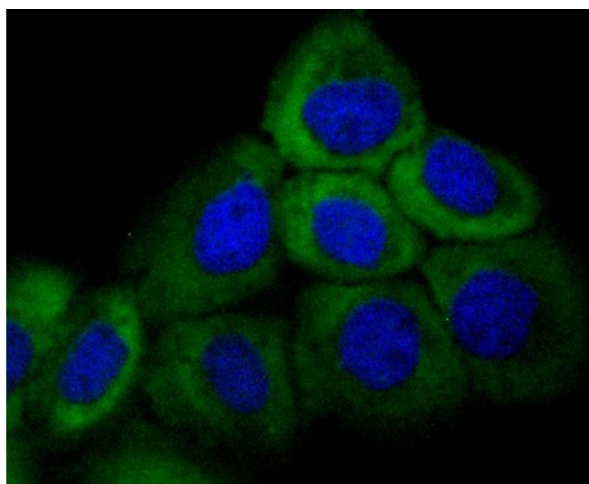
#### Western Blotting

**Image 1.** Human skin lysates, probed with Cytokeratin 16 (1A4) Monoclonal Antibody at 1:1000 overnight at 4°C. Followed by a conjugated secondary antibody.



#### Immunofluorescence (Cultured Cells)

**Image 2.** HeLa cells were fixed in paraformaldehyde, permeabilized with 0.25% Triton X100/PBS and stained with Cytokeratin 16 (1A4) Monoclonal Antibody at 1:200 and incubated overnight at 4°C, followed by secondary antibody incubation, DAPI staining of the nuclei and detection.



#### Immunofluorescence (Cultured Cells)

**Image 3.** A431 cells were fixed in paraformaldehyde, permeabilized with 0.25% Triton X100/PBS and stained with Cytokeratin 16 (1A4) Monoclonal Antibody at 1:200 and incubated overnight at 4°C, followed by secondary antibody incubation, DAPI staining of the nuclei and detection.

Please check the [product details page](#) for more images. Overall 4 images are available for ABIN5557440.