



[Go to Product page](#)

Datasheet for ABIN5557443

## anti-KRT20 antibody

### 3 Images

#### Overview

Quantity:	100 µL
Target:	KRT20
Reactivity:	Human, Mouse, Rat
Host:	Rabbit
Clonality:	Monoclonal
Conjugate:	This KRT20 antibody is un-conjugated
Application:	Western Blotting (WB), Immunohistochemistry (Paraffin-embedded Sections) (IHC (p)), Immunofluorescence (Cultured Cells) (IF (cc))

#### Product Details

Immunogen:	Recombinant human Cytokeratin 20 protein, around C-terminal 150aa.
Clone:	1F10
Isotype:	IgG
Cross-Reactivity:	Human, Mouse, Rat
Purification:	Purified by Protein A.

#### Target Details

Target:	KRT20
Alternative Name:	Cytokeratin 20 ( <a href="#">KRT20 Products</a> )
Background:	Synonyms: K20, CD20, CK20, CK-20, KRT21, Keratin, type I cytoskeletal 20, Cytokeratin-20,

## Target Details

---

Keratin-20, Protein IT, KRT20

Background: Plays a significant role in maintaining keratin filament organization in intestinal epithelia. When phosphorylated, plays a role in the secretion of mucin in the small intestine (By similarity).

Gene ID: 54474

UniProt: [P35900](#)

## Application Details

---

Application Notes: WB 1:300-5000  
IHC-P 1:200-400  
IF(ICC) 1:50-200

Restrictions: For Research Use only

## Handling

---

Format: Liquid

Concentration: 1 µg/µL

Buffer: Aqueous buffered solution containing 1xTBS (pH 7.4), 1 % BSA, 40 %Glycerol and 0.05 % Sodium Azide.

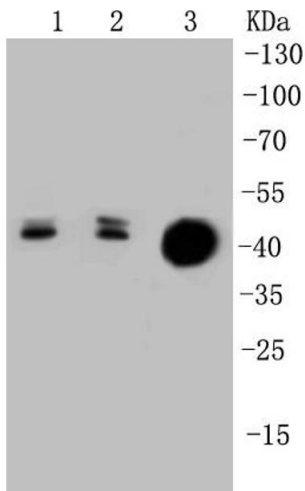
Preservative: ProClin

Precaution of Use: This product contains ProClin: a POISONOUS AND HAZARDOUS SUBSTANCE, which should be handled by trained staff only.

Storage: 4 °C,-20 °C

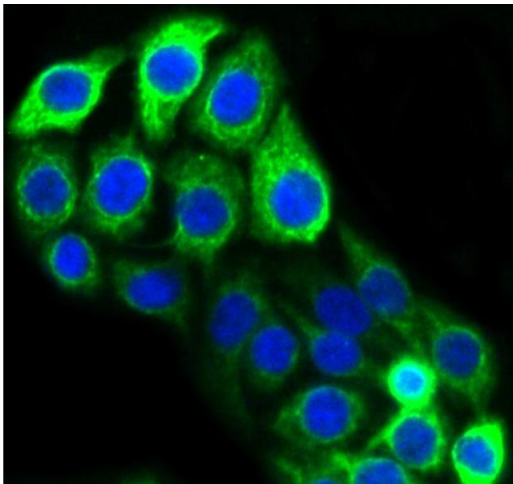
Storage Comment: Shipped at 4°C. Store at -20°C for one year. Avoid repeated freeze/thaw cycles.

Expiry Date: 12 months



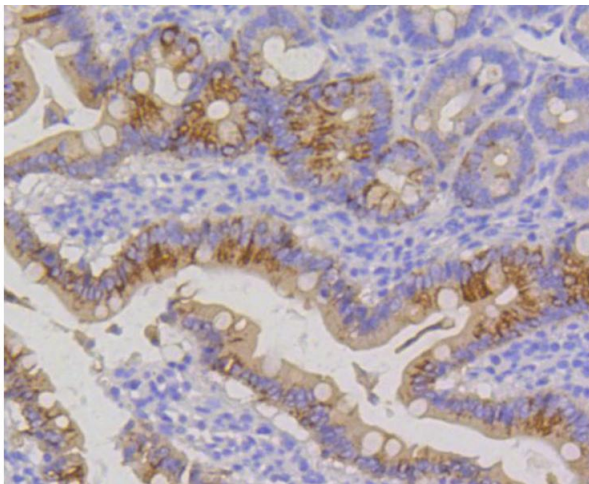
### Western Blotting

**Image 1.** Lane 1: Lovo Cell lysates, Lane 2: HCT116 Cell lysates, Lane 3: CRC lysates, probed with Cytokeratin 20 (1F10) Monoclonal Antibody at 1:1000 overnight at 4°C. Followed by a conjugated secondary antibody.



### Immunofluorescence (Cultured Cells)

**Image 2.** CRC cells were fixed in paraformaldehyde, permeabilized with 0.25% Triton X100/PBS and stained with Cytokeratin 20 (1F10) Monoclonal Antibody at 1:200 and incubated overnight at 4C, followed by secondary antibody incubation, DAPI staining of the nuclei and detection.



### Immunohistochemistry (Paraffin-embedded Sections)

**Image 3.** Paraformaldehyde-fixed, paraffin embedded Rat small intestine, Antigen retrieval by boiling in sodium citrate buffer (pH6) for 15min, Block endogenous peroxidase by 3% hydrogen peroxide for 30 minutes, Blocking buffer at 37°C for 20min, Antibody incubation with Cytokeratin 20 (1F10) Monoclonal Antibody at 1:50 overnight at 4°C, followed by a conjugated secondary and DAB staining.