

Datasheet for ABIN5557446
anti-Cytokeratin 7 antibody



[Go to Product page](#)

2 Images

Overview

Quantity:	100 µL
Target:	Cytokeratin 7 (KRT7)
Reactivity:	Human, Rat, Mouse
Host:	Rabbit
Clonality:	Monoclonal
Conjugate:	This Cytokeratin 7 antibody is un-conjugated
Application:	Western Blotting (WB), Immunofluorescence (Cultured Cells) (IF (cc))

Product Details

Immunogen:	Recombinant human Cytokeratin 7 protein, around C-terminal 150aa.
Clone:	6E6
Isotype:	IgG
Cross-Reactivity:	Human, Mouse, Rat
Purification:	Purified by Protein A.

Target Details

Target:	Cytokeratin 7 (KRT7)
Alternative Name:	Cytokeratin 7 (KRT7 Products)
Background:	Synonyms: K7, CK7, SCL, K2C7, Keratin, type II cytoskeletal 7, Cytokeratin-7, CK-7, Keratin-7, Sarcolectin, Type-II keratin Kb7, KRT7

Target Details

Background: Blocks interferon-dependent interphase and stimulates DNA synthesis in cells.
Involved in the translational regulation of the human papillomavirus type 16 E7 mRNA (HPV16 E7).

Gene ID: 3855

UniProt: [P08729](#)

Application Details

Application Notes: WB 1:300-5000
IF(ICC) 1:50-200

Restrictions: For Research Use only

Handling

Format: Liquid

Concentration: 1 µg/µL

Buffer: Aqueous buffered solution containing 1xTBS (pH 7.4), 1 % BSA, 40 %Glycerol and 0.05 % Sodium Azide.

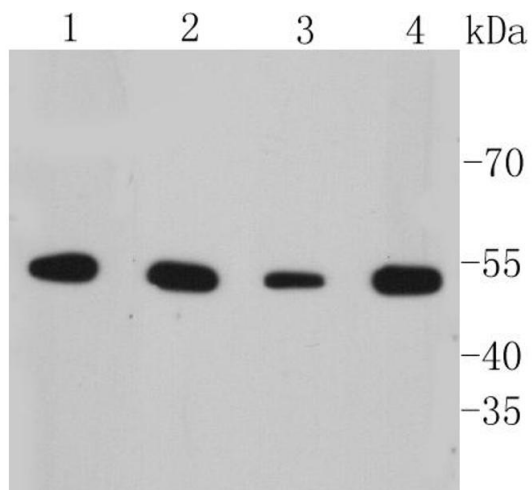
Preservative: ProClin

Precaution of Use: This product contains ProClin: a POISONOUS AND HAZARDOUS SUBSTANCE, which should be handled by trained staff only.

Storage: 4 °C,-20 °C

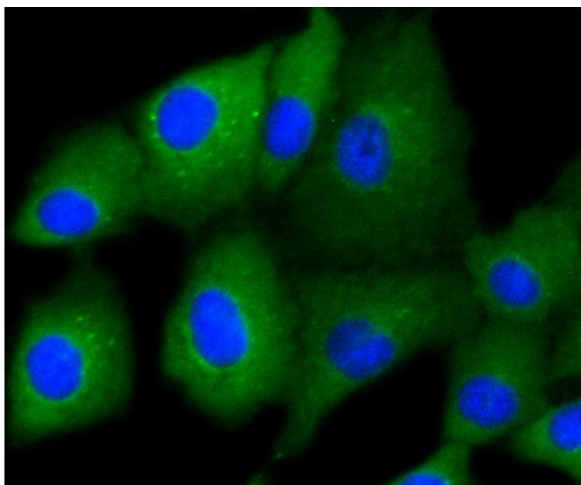
Storage Comment: Shipped at 4°C. Store at -20°C for one year. Avoid repeated freeze/thaw cycles.

Expiry Date: 12 months



Western Blotting

Image 1. Lane 1: A549 Cell lysates, Lane 2: HepG2 Cell lysates, Lane 3: SK-BR-3 Cell lysates, Lane 4: SW1990 cell lysates, probed with Cytokeratin 7 (6E6) Monoclonal Antibody at 1:1000 overnight at 4°C. Followed by a conjugated secondary antibody.



Immunofluorescence (Cultured Cells)

Image 2. A549 cells were fixed in paraformaldehyde, permeabilized with 0.25% Triton X100/PBS and stained with Cytokeratin 7 (6E6) Monoclonal Antibody at 1:200 and incubated overnight at 4C, followed by secondary antibody incubation, DAPI staining of the nuclei and detection.