

Datasheet for ABIN5557494

anti-IRF2 antibody**2** Images[Go to Product page](#)

Overview

Quantity:	100 µL
Target:	IRF2
Reactivity:	Human, Mouse, Rat
Host:	Rabbit
Clonality:	Monoclonal
Conjugate:	This IRF2 antibody is un-conjugated
Application:	Western Blotting (WB), Immunofluorescence (Cultured Cells) (IF (cc))

Product Details

Immunogen:	Recombinant human IRF2 protein, around C-terminal 100aa.
Clone:	5F2
Isotype:	IgG
Cross-Reactivity:	Human, Mouse, Rat
Purification:	Purified by Protein A.

Target Details

Target:	IRF2
Alternative Name:	IRF2 (IRF2 Products)
Background:	Synonyms: IRF-2, Interferon regulatory factor 2, IRF2 Background: Specifically binds to the upstream regulatory region of type I IFN and IFN-inducible

Target Details

MHC class I genes (the interferon consensus sequence (ICS)) and represses those genes. Also acts as an activator for several genes including H4 and IL7. Constitutively binds to the ISRE promoter to activate IL7. Involved in cell cycle regulation through binding the site II (HiNF-M) promoter region of H4 and activating transcription during cell growth. Antagonizes IRF1 transcriptional activation.

Gene ID: 3660

UniProt: [P14316](#)

Application Details

Application Notes: WB 1:300-5000
IF(ICC) 1:50-200

Restrictions: For Research Use only

Handling

Format: Liquid

Concentration: 1 µg/µL

Buffer: Aqueous buffered solution containing 1xTBS (pH 7.4), 1 % BSA, 40 %Glycerol and 0.05 % Sodium Azide.

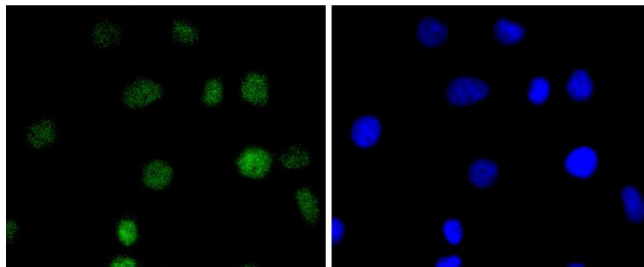
Preservative: ProClin

Precaution of Use: This product contains ProClin: a POISONOUS AND HAZARDOUS SUBSTANCE, which should be handled by trained staff only.

Storage: 4 °C,-20 °C

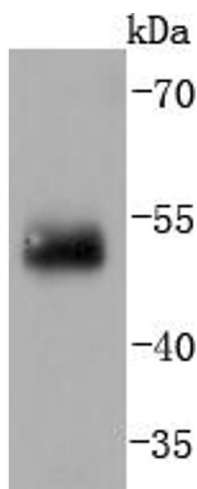
Storage Comment: Shipped at 4°C. Store at -20°C for one year. Avoid repeated freeze/thaw cycles.

Expiry Date: 12 months



Immunofluorescence (Cultured Cells)

Image 1. A549 cells were stained with IRF2 (5F2) Monoclonal Antibody at [1:200] incubated overnight at 4C, followed by secondary antibody incubation, DAPI staining of the nuclei and detection.



Western Blotting

Image 2. Human lung lysates probed with IRF2 (5F2) Monoclonal Antibody at 1:1000 overnight at 4°C. Followed by a conjugated secondary antibody.