



[Go to Product page](#)

Datasheet for ABIN5557501  
**anti-NRF2 antibody (pSer40)**

4 Images

### Overview

Quantity:	100 µL
Target:	NRF2 (NFE2L2)
Binding Specificity:	pSer40
Reactivity:	Human, Mouse, Rat
Host:	Rabbit
Clonality:	Monoclonal
Conjugate:	This NRF2 antibody is un-conjugated
Application:	Western Blotting (WB), Immunohistochemistry (Paraffin-embedded Sections) (IHC (p)), Flow Cytometry (FACS), Immunofluorescence (Cultured Cells) (IF (cc))

### Product Details

Immunogen:	Synthetic peptide derived from human Nrf2(S40), around 1-70aa (phospho S40).
Clone:	7G4
Isotype:	IgG
Cross-Reactivity:	Human, Mouse, Rat
Purification:	Purified by Protein A.

### Target Details

Target:	NRF2 (NFE2L2)
Alternative Name:	Nrf2 ( <a href="#">NFE2L2 Products</a> )

## Target Details

---

Background:	Synonyms: NRF2, Nuclear factor erythroid 2-related factor 2, NF-E2-related factor 2, NFE2-related factor 2, HEBP1, Nuclear factor, erythroid derived 2, like 2, NFE2L2 Background: Transcription activator that binds to antioxidant response (ARE) elements in the promoter regions of target genes. Important for the coordinated up-regulation of genes in response to oxidative stress. May be involved in the transcriptional activation of genes of the beta-globin cluster by mediating enhancer activity of hypersensitive site 2 of the beta-globin locus control region.
Gene ID:	4780
UniProt:	<a href="#">Q16236</a>
Pathways:	<a href="#">ER-Nucleus Signaling</a> , <a href="#">Negative Regulation of intrinsic apoptotic Signaling</a>

## Application Details

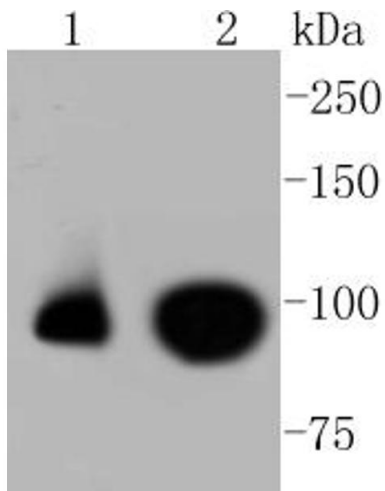
---

Application Notes:	WB 1:300-5000 FCM 1:20-100 IHC-P 1:200-400 IF(ICC) 1:50-200
Restrictions:	For Research Use only

## Handling

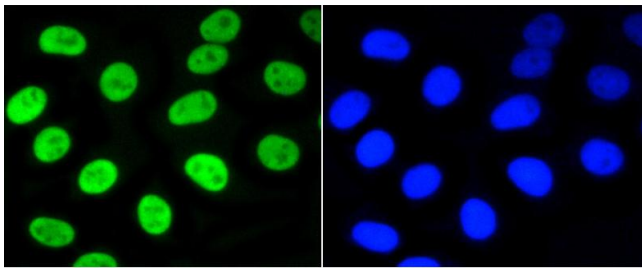
---

Format:	Liquid
Concentration:	1 µg/µL
Buffer:	Aqueous buffered solution containing 1xTBS (pH 7.4), 1 % BSA, 40 %Glycerol and 0.05 % Sodium Azide.
Preservative:	ProClin
Precaution of Use:	This product contains ProClin: a POISONOUS AND HAZARDOUS SUBSTANCE, which should be handled by trained staff only.
Storage:	4 °C,-20 °C
Storage Comment:	Shipped at 4°C. Store at -20°C for one year. Avoid repeated freeze/thaw cycles.
Expiry Date:	12 months



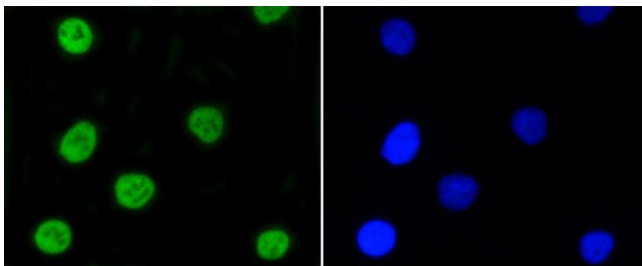
#### Western Blotting

**Image 1.** Lane 1: HepG2, Lane 2: Raji lysates probed with Nrf2(S40) (7G4) Monoclonal Antibody at 1:1000 overnight at 4°C. Followed by a conjugated secondary antibody.



#### Immunofluorescence (Cultured Cells)

**Image 2.** HepG2 cells were stained with Nrf2(S40) (7G4) Monoclonal Antibody at [1:200] incubated overnight at 4C, followed by secondary antibody incubation, DAPI staining of the nuclei and detection.



#### Immunofluorescence (Cultured Cells)

**Image 3.** A549 cells were stained with Nrf2(S40) (7G4) Monoclonal Antibody at [1:200] incubated overnight at 4C, followed by secondary antibody incubation, DAPI staining of the nuclei and detection.

Please check the [product details page](#) for more images. Overall 4 images are available for ABIN5557501.