



[Go to Product page](#)

Datasheet for ABIN5557538
anti-SMAD2 antibody

2 Images

Overview

Quantity:	100 µL
Target:	SMAD2
Reactivity:	Human, Mouse, Rat
Host:	Rabbit
Clonality:	Monoclonal
Conjugate:	This SMAD2 antibody is un-conjugated
Application:	Western Blotting (WB), Immunohistochemistry (Paraffin-embedded Sections) (IHC (p)), Flow Cytometry (FACS), Immunofluorescence (Cultured Cells) (IF (cc))

Product Details

Immunogen:	Recombinant human Smad2 protein, around N-terminal 1-200aa.
Clone:	9A3
Isotype:	IgG
Cross-Reactivity:	Human, Mouse, Rat
Purification:	Purified by Protein A.

Target Details

Target:	SMAD2
Alternative Name:	Smad2 (SMAD2 Products)
Background:	Synonyms: JV18, MADH2, MADR2, JV18-1, hMAD-2, hSMAD2, Mothers against

Target Details

decapentaplegic homolog 2, MAD homolog 2, Mothers against DPP homolog 2, Mad-related protein 2, SMAD family member 2, SMAD 2, Smad2

Background: Receptor-regulated SMAD (R-SMAD) that is an intracellular signal transducer and transcriptional modulator activated by TGF-beta (transforming growth factor) and activin type 1 receptor kinases. Binds the TRE element in the promoter region of many genes that are regulated by TGF-beta and, on formation of the SMAD2/SMAD4 complex, activates transcription. May act as a tumor suppressor in colorectal carcinoma. Positively regulates PDPK1 kinase activity by stimulating its dissociation from the 14-3-3 protein YWHAQ which acts as a negative regulator.

Gene ID: 4087

UniProt: [Q15796](#)

Pathways: [Cell Division Cycle](#), [Hormone Transport](#), [Chromatin Binding](#), [Protein targeting to Nucleus](#)

Application Details

Application Notes: WB 1:300-5000
FCM 1:20-100
IHC-P 1:200-400
IF(ICC) 1:50-200

Restrictions: For Research Use only

Handling

Format: Liquid

Concentration: 1 µg/µL

Buffer: Aqueous buffered solution containing 1xTBS (pH 7.4), 1 % BSA, 40 %Glycerol and 0.05 % Sodium Azide.

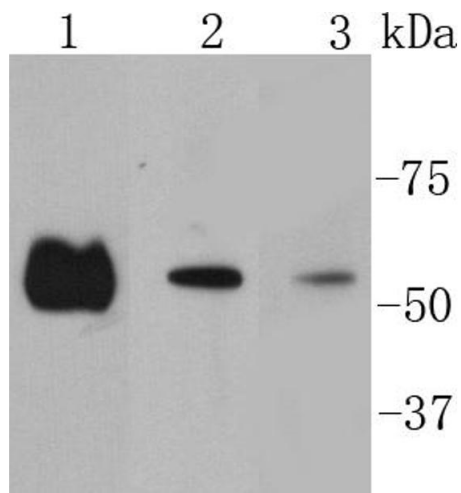
Preservative: ProClin

Precaution of Use: This product contains ProClin: a POISONOUS AND HAZARDOUS SUBSTANCE, which should be handled by trained staff only.

Storage: 4 °C, -20 °C

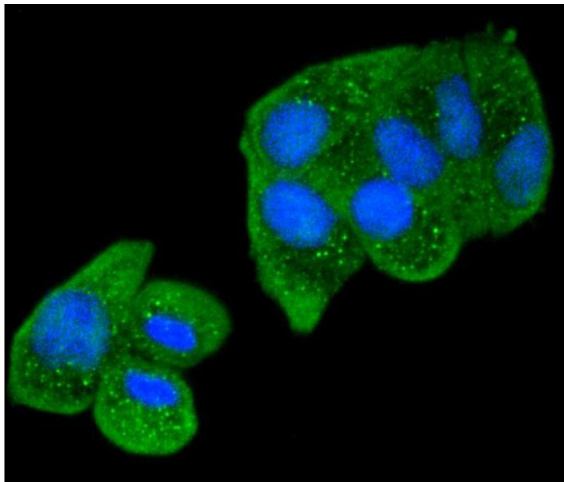
Storage Comment: Shipped at 4°C. Store at -20°C for one year. Avoid repeated freeze/thaw cycles.

Expiry Date: 12 months



Western Blotting

Image 1. Lane 1: HeLa lysates, Lane 2:A431 lysates, Lane 3: PC12 lysates probed with Smad2 (9A3) Monoclonal Antibody at 1:1000 overnight at 4°C. Followed by a conjugated secondary antibody.



Immunofluorescence (Cultured Cells)

Image 2. HeLa cells were stained with Smad2 (9A3) Monoclonal Antibody at [1:200] incubated for overnight at 4C followed by secondary antibody incubation, DAPI staining of the nuclei and detection.