

## Datasheet for ABIN5563928 **anti-CD31 antibody**



[Go to Product page](#)

### 1 Image

#### Overview

Quantity:	100 µg
Target:	CD31 (PECAM1)
Reactivity:	Human
Host:	Mouse
Clonality:	Monoclonal
Conjugate:	This CD31 antibody is un-conjugated
Application:	Flow Cytometry (FACS), Immunohistochemistry (IHC), Immunoprecipitation (IP)

#### Product Details

Purpose:	CD31 Unconjugated Antibody
Immunogen:	Cell membrane preparation from the spleen of a patient with hairy cell leukaemia
Clone:	JC70
Isotype:	IgG1, kappa
Characteristics:	<p>The clone JC70, recognizes a 130-140 kD type I transmembrane glycoprotein known as CD31. CD31 is also known as PECAM-1 (Platelet Endothelial Cell Adhesion Molecule-1) and is a member of the immunoglobulin (Ig) superfamily. It is expressed on the surface of circulating platelets, monocytes, neutrophils, particular T-cell subsets, and is a component of the endothelial cell intercellular junction. CD31 is implicated in several functions, including transendothelial migration of leukocytes, angiogenesis, integrin activation, etc.</p>
Purification:	Purified
Purity:	>95 %

## Product Details

Grade: GMP Grade

## Target Details

Target: CD31 (PECAM1)

Alternative Name: CD31 ([PECAM1 Products](#))

UniProt: [P16284](#)

Pathways: [Regulation of Actin Filament Polymerization](#)

## Application Details

Application Notes: Optimal working dilution should be determined by the investigator.

Restrictions: For Research Use only

## Handling

Format: Liquid

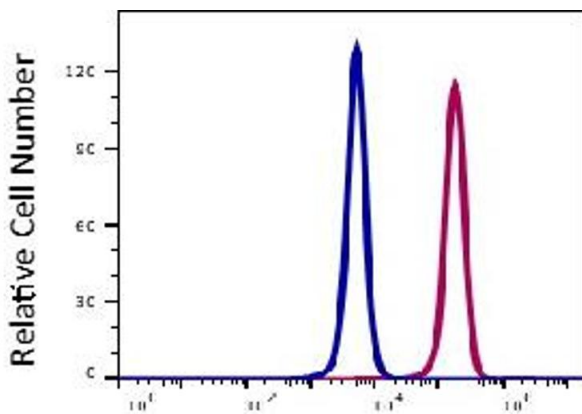
Buffer: PBS pH 7.2, 0.1 % (w/v) BSA, 0.09 % (w/v) sodium azide

Preservative: Sodium azide

Precaution of Use: This product contains Sodium azide: a POISONOUS AND HAZARDOUS SUBSTANCE which should be handled by trained staff only.

Storage: 4 °C

## Images



CD31 Purified, with isotype control

### Flow Cytometry

Image 1.