

Datasheet for ABIN5563946  
**anti-CD68 antibody**



[Go to Product page](#)

1 Image

## Overview

Quantity:	100 µg
Target:	CD68
Reactivity:	Human
Host:	Mouse
Clonality:	Monoclonal
Conjugate:	This CD68 antibody is un-conjugated
Application:	Flow Cytometry (FACS), Immunohistochemistry (IHC), Immunoprecipitation (IP)

## Product Details

Purpose:	CD68 Unconjugated Antibody
Immunogen:	Lysosomal fraction of human alveolar macrophages.
Clone:	KP1
Isotype:	IgG1, kappa
Characteristics:	The clone KP1 recognizes 110 kDa highly glycosylated lysosomal-associated membrane protein (LAMP) known as CD68. It plays important role in the immune process of endocytosis and/or lysosomal trafficking mostly carried out by cellular components of innate immunity. The CD68 is abundantly expressed in the cytoplasmic granules of macrophages, monocytes, neutrophils, basophils, subset of hematopoietic progenitors, $\gamma/\delta$ T cells, NK cells, LAK cells, subset of B cells, fibroblasts, and endothelial cells. Studies suggest that KP1 is a very useful tool for studying disorders of the monocyte/macrophage system, including both reactive and neoplastic states.

## Product Details

---

Purification: Purified

Purity: >95 %

Grade: GMP Grade

## Target Details

---

Target: CD68

Alternative Name: CD68 ([CD68 Products](#))

UniProt: [P34810](#)

## Application Details

---

Application Notes: Optimal working dilution should be determined by the investigator.

Restrictions: For Research Use only

## Handling

---

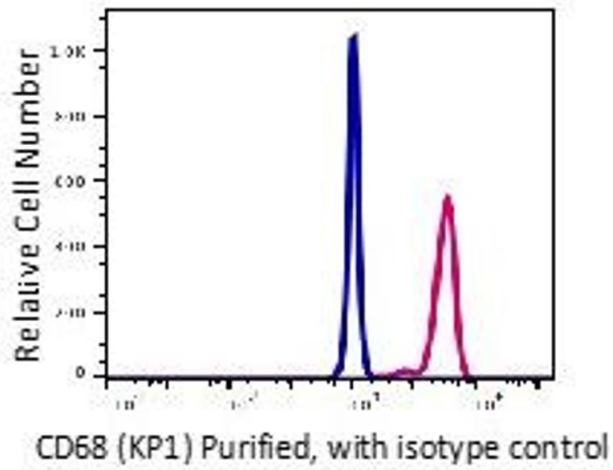
Format: Liquid

Buffer: PBS pH 7.2, 0.1 % (w/v) BSA, 0.09 % (w/v) sodium azide

Preservative: Sodium azide

Precaution of Use: This product contains Sodium azide: a POISONOUS AND HAZARDOUS SUBSTANCE which should be handled by trained staff only.

Storage: 4 °C



### Flow Cytometry

Image 1.