

Datasheet for ABIN5563972
anti-YY1 antibody



[Go to Product page](#)

2 Images

Overview

Quantity:	100 µL
Target:	YY1
Reactivity:	Human
Host:	Rabbit
Clonality:	Polyclonal
Conjugate:	This YY1 antibody is un-conjugated
Application:	Western Blotting (WB), Immunoprecipitation (IP), Cleavage Under Targets and Release Using Nuclease (CUT&RUN)

Product Details

Isotype:	IgG
Purification:	Affinity Purified

Target Details

Target:	YY1
Alternative Name:	YY1 (YY1 Products)
Molecular Weight:	63 kDa

Application Details

Application Notes:	ChIP-Seq: 7 µL per ChIP IP: 0.5 - 4 µL per IP WB: 1:2,000 - 1:5,000 dilution CUT&RUN: 1:50 dilution
--------------------	---

Application Details

Restrictions: For Research Use only

Handling

Format: Liquid

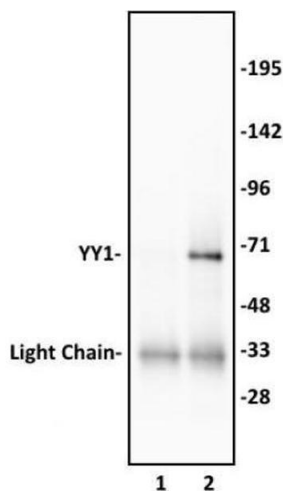
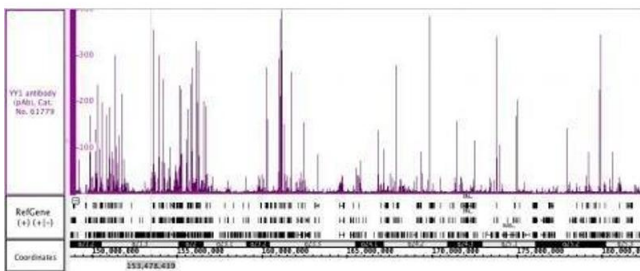
Buffer: Purified IgG in PBS with 30 % glycerol and 0.035 % sodium azide

Preservative: Sodium azide

Precaution of Use: This product contains Sodium azide: a POISONOUS AND HAZARDOUS SUBSTANCE which should be handled by trained staff only.

Storage: -20 °C

Images



Immunoprecipitation

Image 1. YY1 antibody (pAb) tested by Immunoprecipitation. 2 µl of YY1 antibody was used to immunoprecipitate YY1 from 250 µg of Raji nuclear cell extract (lane 2). 2 µl of rabbit IgG was used as a negative control (lane 1). The immunoprecipitated protein was detected by Western blotting using the YY1 antibody at a dilution of 1:1,000.

Western Blotting

Image 2. YY1 antibody (pAb) tested by Western blot. Nuclear extract (20 µg) of Raji (Lane 1) and HeLa cells (Lane 2) probed with YY1 antibody at a 1:5,000 dilution.