



[Go to Product page](#)

Datasheet for ABIN5564143
Acrolein Protein (ACR) (BSA)

1 Image

Overview

Quantity:	50 µg
Target:	Acrolein (ACR)
Origin:	Chemical
Source:	Synthetic
Purification tag / Conjugate:	This Acrolein protein is labelled with BSA.
Application:	ELISA, Western Blotting (WB)

Product Details

Characteristics:	Acrolein BSA Conjugate
Sterility:	0.2 µm filtered

Target Details

Target:	Acrolein (ACR)
Alternative Name:	Acrolein (ACR Products)
Target Type:	Chemical

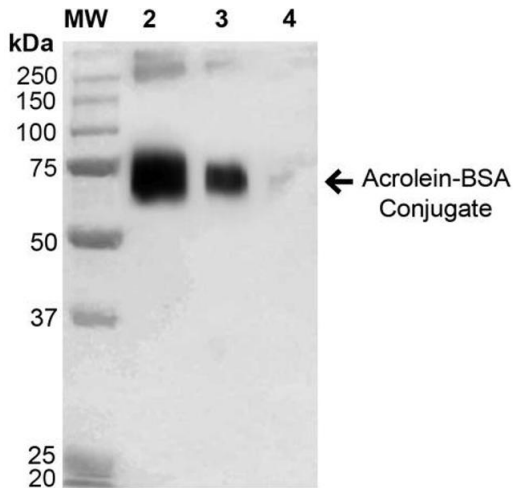
Application Details

Application Notes:	Detectable in ELISA at ≥ 5 ng.
Restrictions:	For Research Use only

Handling

Concentration:	Lot specific
Buffer:	PBS pH 7.4, 0.09 % Sodium Azide
Storage:	-20 °C

Images



Western Blotting

Image 1. Western blot analysis showing detection of 67 kDa Acrolein BSA Conjugate (ABIN5564143, ABIN5564144 and ABIN5564145) using Anti-Acrolein Antibody, Clone 2H2 (SMC-504). Lane 1: Molecular Weight Ladder (MW). Lane 2: Acrolein BSA (ABIN5564143, ABIN5564144 and ABIN5564145) (1.0 µg). Lane 3: Acrolein BSA (ABIN5564143, ABIN5564144 and ABIN5564145) (0.5 µg). Lane 4: Acrolein BSA (ABIN5564143, ABIN5564144 and ABIN5564145) (0.1.0 µg). Block: 5 % Skim Milk in 1X TBST. Primary Antibody: Anti-Acrolein Antibody, Clone 2H2 (SMC-504) at 1:1000 for 2 hours at RT. Secondary Antibody: Goat Anti-Mouse IgG: HRP at 1:2000 for 60 min at RT. Color Development: ECL solution for 5 min at RT. Predicted/Observed Size: 67 kDa.