



[Go to Product page](#)

Datasheet for ABIN5565320

## anti-Complexin 1 antibody (AA 1-134) (PE)

### 2 Images

#### Overview

Quantity:	150 µg
Target:	Complexin 1 (CPLX1)
Binding Specificity:	AA 1-134
Reactivity:	Human
Host:	Rabbit
Clonality:	Polyclonal
Conjugate:	This Complexin 1 antibody is conjugated to PE
Application:	Immunohistochemistry (IHC), Immunocytochemistry (ICC), Immunofluorescence (IF), Flow Cytometry (FACS)

#### Product Details

Brand:	AssayLite™
Immunogen:	Human Complexin 1 (1-134 aa) expressed in E. coli.
Characteristics:	Purified antibody validated for specificity and sensitivity.
Purification:	Affinity Purified

#### Target Details

Target:	Complexin 1 (CPLX1)
Alternative Name:	Complexin-1 (CPX I) ( <a href="#">CPLX1 Products</a> )
Gene ID:	10815

## Target Details

---

UniProt: [O14810](#)

Pathways: [Hormone Transport, Synaptic Vesicle Exocytosis, Dicarboxylic Acid Transport](#)

## Application Details

---

Application Notes: Optimal working dilution should be determined by the investigator.

Restrictions: For Research Use only

## Handling

---

Format: Lyophilized

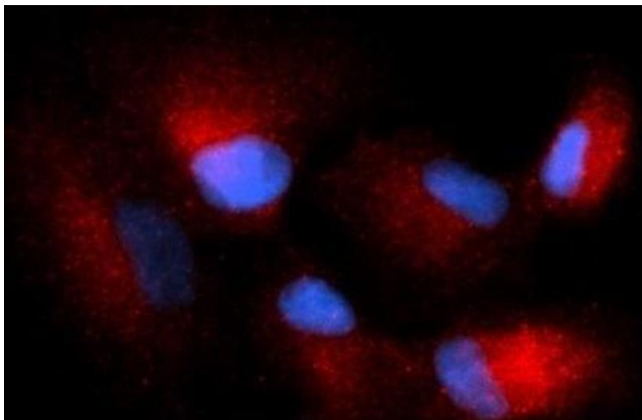
Buffer: Lyophilized from PBS pH 7.4, 20 mg/mL BSA, and 0.02 % Sodium Azide

Preservative: Sodium azide

Precaution of Use: This product contains Sodium azide: a POISONOUS AND HAZARDOUS SUBSTANCE which should be handled by trained staff only.

## Images

---



### Immunofluorescence

**Image 1.**

Flow Cytometry

Image 2.

