



[Go to Product page](#)

Datasheet for ABIN5566347  
**anti-CCL22 antibody (AA 25-93) (PE)**

2 Images

### Overview

Quantity:	150 µg
Target:	CCL22
Binding Specificity:	AA 25-93
Reactivity:	Human
Host:	Rabbit
Clonality:	Polyclonal
Conjugate:	This CCL22 antibody is conjugated to PE
Application:	Immunohistochemistry (IHC), Immunocytochemistry (ICC), Flow Cytometry (FACS), Immunofluorescence (IF)

### Product Details

Brand:	AssayLite™
Immunogen:	Human MDC (25-93 aa) expressed in E. Coli.
Characteristics:	Purified antibody validated for specificity and sensitivity.
Purification:	Affinity Purified

### Target Details

Target:	CCL22
Alternative Name:	C-C Motif Chemokine 22 (MDC) ( <a href="#">CCL22 Products</a> )
Gene ID:	6367

## Target Details

UniProt: [O00626](#)

## Application Details

Application Notes: Optimal working dilution should be determined by the investigator.

Restrictions: For Research Use only

## Handling

Format: Lyophilized

Buffer: Lyophilized from PBS pH 7.4, 20 mg/mL BSA, and 0.02 % Sodium Azide

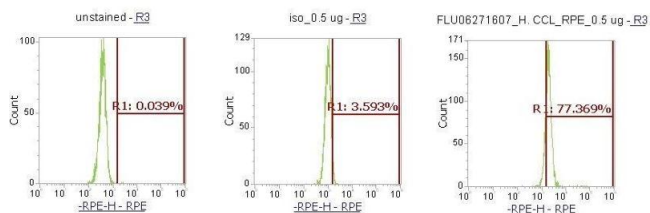
Preservative: Sodium azide

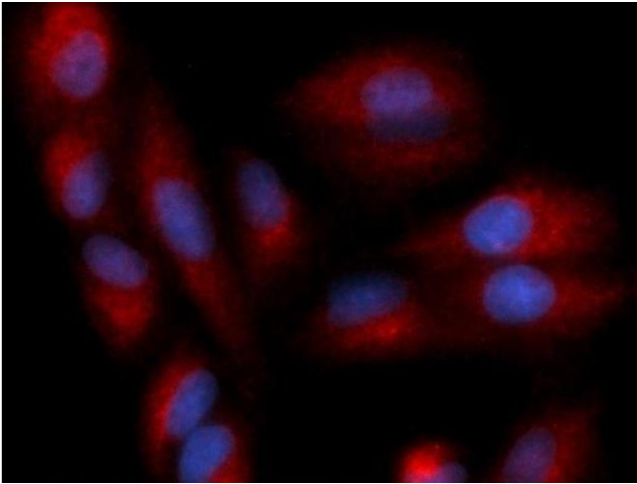
Precaution of Use: This product contains Sodium azide: a POISONOUS AND HAZARDOUS SUBSTANCE which should be handled by trained staff only.

## Images

### Flow Cytometry

Image 1.





### Immunofluorescence

Image 2.