

Datasheet for ABIN5569035
anti-IGLC1 antibody



[Go to Product page](#)

2 Images

Overview

Quantity:	100 µg
Target:	IGLC1
Reactivity:	Mouse
Host:	Rabbit
Clonality:	Monoclonal
Conjugate:	This IGLC1 antibody is un-conjugated
Application:	Western Blotting (WB), Flow Cytometry (FACS), ELISA, Immunocytochemistry (ICC), Immunohistochemistry (IHC), Immunoprecipitation (IP)

Product Details

Purpose:	Recombinant rabbit monoclonal antibody raised against mouse immunoglobulin lambda light chain.
Immunogen:	Original antibody is raised against mouse IgM lambda.
Clone:	RM110
Isotype:	IgG
Specificity:	This antibody reacts to the lambda light chain of mouse immunoglobulins. No cross reactivity with the kappa light chain, human IgG, rat IgG, or goat IgG.
Cross-Reactivity:	Mouse
Cross-Reactivity (Details):	This antibody reacts to the lambda light chain of mouse immunoglobulins. No cross reactivity with the kappa light chain, human IgG, rat IgG, or goat IgG.

Target Details

Target:	IGLC1
Alternative Name:	IgI-C1 (IGLC1 Products)
Background:	Full Gene Name: immunoglobulin lambda chain, constant region 1 Synonyms: Clambda1
Gene ID:	110785

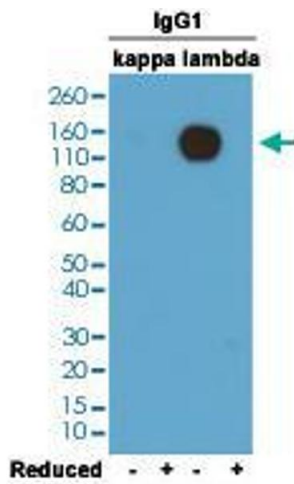
Application Details

Application Notes:	ELISA (0.005 - 0.2 µg/mL) Flow Cytometry Immunocytochemistry (0.5 - 2 µg/mL) Immunohistochemistry (0.5 - 2 µg/mL) Immunoprecipitation Western Blot (0.1 - 0.5 µg/mL) The optimal working dilution should be determined by the end user.
--------------------	-----------------------------------------------------------------------------------------------------------------------------------------------------------------------------------------------------------------------------------------------------------

Restrictions:	For Research Use only
---------------	-----------------------

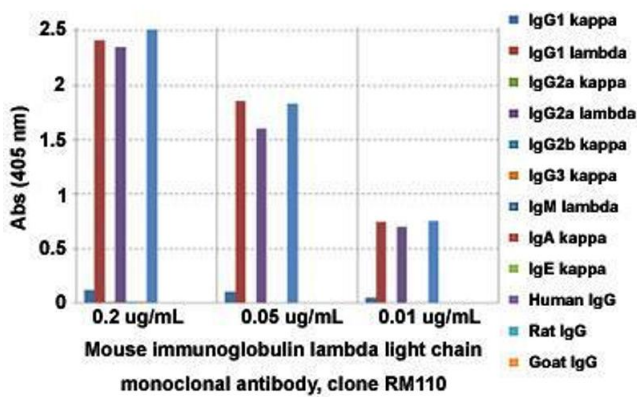
Handling

Format:	Liquid
Buffer:	In PBS (50 % glycerol, 1 % BSA, 0.09 % sodium azide)
Preservative:	Sodium azide
Precaution of Use:	This product contains Sodium azide: a POISONOUS AND HAZARDOUS SUBSTANCE which should be handled by trained staff only.
Storage:	-20 °C
Storage Comment:	Store at -20°C. Aliquot to avoid repeated freezing and thawing.



Western Blotting

Image 1. Western blot analysis of nonreduced (-) and reduced (+) mouse IgG1 (kappa) and IgG1 (lambda) (20 ng/lane) with Mouse immunoglobulin lambda light chain monoclonal antibody, clone RM110 under 0.2 ug/mL working concentration. This antibody reacts to nonreduced IgG1 (lambda).



ELISA

Image 2. ELISA analysis of Mouse immunoglobulin lambda light chain monoclonal antibody, clone RM110 at the following concentrations: 0.2 ug/mL, 0.05 ug/mL, and 0.01 ug/mL. The plate was coated with 50 ng/well of different immunoglobulins and the result shows this antibody reacts to the lambda light chain of mouse immunoglobulins. No cross reactivity with the kappa light chain, human IgG, rat IgG, or goat IgG. An alkaline phosphatase conjugated anti-rabbit IgG as the secondary antibody.