



[Go to Product page](#)

Datasheet for ABIN5569533

MB Protein (AA 1-154) (His tag)

1 Image

Overview

Quantity:	100 µg
Target:	MB
Protein Characteristics:	AA 1-154
Origin:	Human
Source:	Escherichia coli (E. coli)
Protein Type:	Recombinant
Purification tag / Conjugate:	This MB protein is labelled with His tag.
Application:	SDS-PAGE (SDS)

Product Details

Sequence: MGSSHHHHHH SSSLVPRGSH MGLSDGEWQL VLNVWGKVEA DIPGHGQEV LIRLFKGGHPET
LEKFDKFKHL KSEDEMKASE DLKKHGATVL TALGGILKKK GHHEAEIKPL AQSHATKHKI
PVKYLEFISE CIIQVLQSKH PGDFGADAQG AMNKALELFR KDMASNYKEL GFQG

Target Details

Target:	MB
Abstract:	MB Products
Background:	Full Gene Name: myoglobin Synonyms: MGC13548,PVALB
Gene ID:	4151

Application Details

Comment:	<i>Escherichia coli</i> expression system Product Quality tested by: Loading 3 ug protein in 15% SDS-PAGE
Restrictions:	For Research Use only

Handling

Format:	Liquid
Concentration:	1 mg/mL
Buffer:	In 20 mM Tris-HCl, 100 mM NaCl, pH 8.0 (1 mM dithiothreitol, 10 % glycerol)
Storage:	4 °C,-20 °C,-80 °C
Storage Comment:	Store at 4 °C for 1-2 weeks. For long term storage store at -20 °C or -80 °C. Aliquot to avoid repeated freezing and thawing.

Images

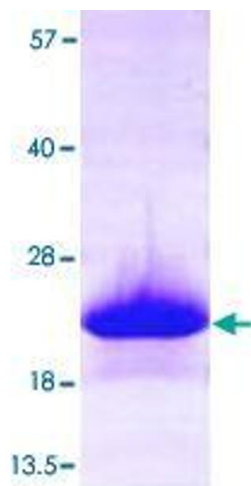


Image 1.