



[Go to Product page](#)

Datasheet for ABIN5569536

IPP Protein (AA 1-157)

1 Image

Overview

Quantity:	100 µg
Target:	IPP
Protein Characteristics:	AA 1-157
Origin:	Human
Source:	Escherichia coli (E. coli)
Protein Type:	Recombinant
Application:	SDS-PAGE (SDS)

Product Details

Purpose:	IPP (Human) Recombinant Protein
Sequence:	MANEDCPKAA DSPFSSDKHA QLILAQINKM RNGQHFCDVQ LQVGQESFKA HRLVLAASSP YFAALFTGGM KESSKDWWPI LGIEAGIFQI LLDFIYTGIV NIGVNNVQEL IIAADMLQLT EVVHLCCEFL KGQIDPLNCI GIFQFSEQIA CHDLLEF
Characteristics:	Human IPP (NP_005888, 1 a.a. - 157 a.a.) partial recombinant protein expressed in <i>Escherichia coli</i> .
Purification:	Escherichia coli expression system

Target Details

Target:	IPP
Alternative Name:	IPP (IPP Products)
Background:	Full Gene Name: intracisternal A particle-promoted polypeptide

Target Details

Synonyms: KLHL27

Gene ID: 3652

Application Details

Application Notes: Optimal working dilution should be determined by the investigator.

Comment: *Escherichia coli* expression system
Product Quality tested by: Loading 3 ug protein in 15% SDS-PAGE

Restrictions: For Research Use only

Handling

Format: Liquid

Concentration: 1 mg/mL

Buffer: In 10 mM HEPES, 25 mM NaCl, pH 7.4.

Handling Advice: Aliquot to avoid repeated freezing and thawing.

Storage: -20 °C, -80 °C

Images

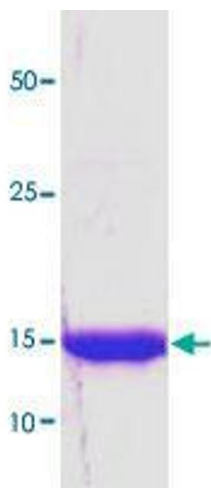


Image 1.