



[Go to Product page](#)

Datasheet for ABIN5569631

## ABI3 Protein (AA 1-366) (His tag)

### 1 Image

#### Overview

Quantity:	20 µg
Target:	ABI3
Protein Characteristics:	AA 1-366
Origin:	Human
Source:	Escherichia coli (E. coli)
Protein Type:	Recombinant
Purification tag / Conjugate:	This ABI3 protein is labelled with His tag.
Application:	SDS-PAGE (SDS)

#### Product Details

Purpose:	ABI3 (Human) Recombinant Protein
Sequence:	MGSSHHHHHH SSSLVPRGSH MGSMAELQQL QEFEIPTGRE ALRGNHSALL RVADYCEDNY VQATDKRKAL EETMAFTTQA LASVAYQVGN LAGHTLRMLD LQGAALRQVE ARVSTLGQMV NMHMEKVARR EIGTLATVQR LPPGQKVIAP ENLPPLTPYC RRPLNFGCLD DIGHGKDLN TQLSRTGTLN RRSIKAPATP ASATLGRPPR IPEPVHLPVV PDGRLSAASS ASSLASAGSA EGVGGAPTPK GQAAPPAPPL PSSLDPPPPP AAVEVFQRPP TLEELSPPPP DEELPLPLDL PPPPPLDGD E LGLPPPPPGF GPDEPSWVPA SYLEKVVTLN PYTSQKDNLN SFSEGTVICV TRRYSDDGWCE GVSSEGTGFF PGNVVEPSC
Characteristics:	Human ABI3 (NP_057512, 1 a.a. - 366 a.a. ) full-length recombinant protein with His tag expressed in <i>Escherichia coli</i> .
Purification:	Escherichia coli expression system

## Target Details

Target:	ABI3
Alternative Name:	ABI3 ( <a href="#">ABI3 Products</a> )
Background:	Full Gene Name: ABI family, member 3 Synonyms: NESH,SSH3BP3
Gene ID:	51225

## Application Details

Application Notes:	Optimal working dilution should be determined by the investigator.
Comment:	<i>Escherichia coli</i> expression system Product Quality tested by: 3 ug/lane in 15% SDS-PAGE Stained with Coomassie Blue. Due to the protein nature, dimmers and multimers may be observed.
Restrictions:	For Research Use only

## Handling

Format:	Liquid
Buffer:	In 20 mM Tris-HCl buffer, pH 8.0 (0.4 M Urea, 10 % glycerol).
Handling Advice:	Aliquot to avoid repeated freezing and thawing.
Storage:	-20 °C,-80 °C

## Images

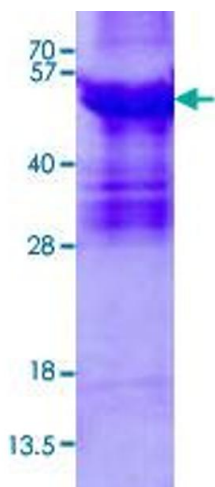


Image 1.