



[Go to Product page](#)

Datasheet for ABIN5569632
SETD7 Protein (AA 1-366)

1 Image

Overview

Quantity:	100 µg
Target:	SETD7
Protein Characteristics:	AA 1-366
Origin:	Human
Source:	Escherichia coli (E. coli)
Protein Type:	Recombinant
Application:	SDS-PAGE (SDS)

Product Details

Purpose:	SETD7 (Human) Recombinant Protein
Sequence:	MDSDDDEMVEE AVEGHLDDDG LPHGFCTVTY SSTDRFEGNF VHGEKNGRGK FFFFDGSTLE GYYVDDALQG QGVYTYEDGG VLQGTYYVDGE LNGPAQEYDT DGRLIFKGQY KDNIRHGVCW IYYPDGGSLV GEVNEDGEMT GEKIAYVYPD ERTALYGKFI DGEMIEGKLA TLMSTEEGRP HFELMPGNSV YHFDKSTSSC ISTNALLPDP YESERVYVAE SLISSAGEGL FSKVAVGPNT VMSFYNGVRI THQEVDSDRW ALNGNTLSLD EETVIDVPEP YNHVSKYCAS LGHKANHSFT PNCIYDMFVH PRFGPIKCIR TLRAVEADEE LTVAYGYDHS PPGKSGPEAP EWYQVELKAF QATQQK
Characteristics:	Human SETD7 (NP_085151, 1 a.a. - 366 a.a.) full-length recombinant protein expressed in <i>Escherichia coli</i> .
Purification:	Escherichia coli expression system

Target Details

Target:	SETD7
Alternative Name:	SETD7 (SETD7 Products)
Background:	Full Gene Name: SET domain containing (lysine methyltransferase) 7 Synonyms: FLJ21193,KIAA1717,KMT7,SET7,SET7/9,SET9
Gene ID:	80854

Application Details

Application Notes:	Optimal working dilution should be determined by the investigator.
Comment:	<i>Escherichia coli</i> expression system Product Quality tested by: Loading 3 ug protein in 10% SDS-PAGE
Restrictions:	For Research Use only

Handling

Format:	Liquid
Concentration:	1 mg/mL
Buffer:	In 50 mM Tris-HCl buffer, 0.2 M NaCl, pH 7.5 (5 mM DTT, 20 % glycerol).
Preservative:	Dithiothreitol (DTT)
Precaution of Use:	This product contains Dithiothreitol (DTT): a POISONOUS AND HAZARDOUS SUBSTANCE which should be handled by trained staff only.
Handling Advice:	Aliquot to avoid repeated freezing and thawing.
Storage:	-20 °C,-80 °C

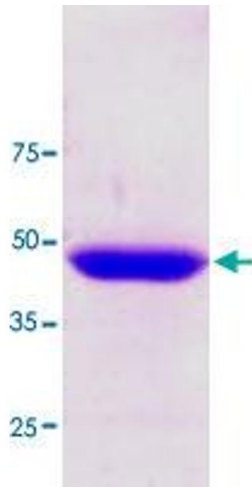


Image 1.