



[Go to Product page](#)

Datasheet for ABIN5569696

Luciferase Protein (AA 1-550) (His tag)

1 Image

Overview

Quantity:	100 µg
Target:	Luciferase
Protein Characteristics:	AA 1-550
Origin:	Firefly
Source:	Escherichia coli (E. coli)
Protein Type:	Recombinant
Purification tag / Conjugate:	This Luciferase protein is labelled with His tag.
Application:	SDS-PAGE (SDS)

Product Details

Purpose:	Luciferase (Firefly) Recombinant Protein
Sequence:	MGSSHHHHHH SSSLVPRGSH MMEDAKNIKK GPAPFYPLED GTAGEQLHKA MKRYALVPGT IAFTDAHIEV DITYAEYFEM SVRLAEAMKR YGLNTNHRIV VSENSLQFF MPVLGALFIG VAVAPANDIY NERELLNSMG ISQPTVVFVS KKGLQKILNV QKKLPPIQKI IIMDSKTDYQ GFQSMYTFVT SHLPPGFNEY DFVPESFDRD KTIALIMNSS GSTGLPKGVA LPHRTACVRF SHARDPIFGN QIIPDTAILS VVPFHGFGM FTTLGYLICG FRVVLMYRFE EELFLRSLQD YKIQSALLVP TLFSFFAKST LIDKYDLSNL HEIASGGAPL SKEVGEAVAK RFHLPGIRQG YGLTETTSAL LITPEGDDKP GAVGKVPFF EAKVVDLDTG KTLGVNQRGE LCVRGPMIMS GYVNNPEATN ALIDKDGWLH SGDIAYWDED EHFFIVDRK SLIKYKGYQV APAELESILL QHPNIFDAGV AGLPDDDAGE LPAAVVLEH GKTMTKEIV DYVASQVTTA KKLRRGGVVFV DEVPKGLTGK LDARKIREIL IKAKKGGKIA V
Characteristics:	Firefly Luciferase (BAF48390, 1 a.a. - 550 a.a.) full-length recombinant protein with His tag

Product Details

expressed in *Escherichia coli*.

Purification: *Escherichia coli* expression system

Target Details

Target: Luciferase

Abstract: [Luciferase Products](#)

Application Details

Application Notes: Optimal working dilution should be determined by the investigator.

Comment: ***Escherichia coli*** expression system
Product Quality tested by: Loading 3 ug protein in 15% SDS-PAGE

Restrictions: For Research Use only

Handling

Format: Liquid

Concentration: 1 mg/mL

Buffer: In 20 mM Tris-HCl buffer, pH 8.0 (1 mM DTT, 10 % glycerol).

Preservative: Dithiothreitol (DTT)

Precaution of Use: This product contains Dithiothreitol (DTT): a POISONOUS AND HAZARDOUS SUBSTANCE which should be handled by trained staff only.

Handling Advice: Aliquot to avoid repeated freezing and thawing.

Storage: -20 °C,-80 °C

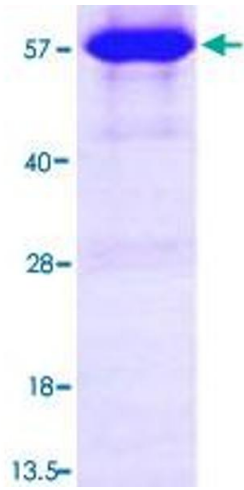


Image 1.