

Datasheet for ABIN5569854  
**FKBP14 Protein (AA 20-211) (His tag)**



[Go to Product page](#)

1 Image

Overview

Quantity:	100 µg
Target:	FKBP14
Protein Characteristics:	AA 20-211
Origin:	Human
Source:	Escherichia coli (E. coli)
Protein Type:	Recombinant
Biological Activity:	Active
Purification tag / Conjugate:	This FKBP14 protein is labelled with His tag.
Application:	SDS-PAGE (SDS), Functional Studies (Func)

Product Details

Purpose:	FKBP14 (Human) Recombinant Protein
Sequence:	MGSSHHHHHH SGLVPRGSH MALIPEPEVK IEVLQKPFIC HRKTKGGDLM LVHYEGYLEK DGSLFHSTHK HNNGQPIWFT LGILEALKGW DQGLKGMCVG EKRKLIIPPA LGYGKEGK GK IPPESTLIFN IDLLEIRNGP RSHESFQEMD LNDDWKLSKD EVKAYLKKEF EKHGAVVNES HHDALVEDIF DKEDEDKDG F ISAREFTYKH DEL
Characteristics:	Human FKBP14 (NP_060416, 20 a.a. - 211 a.a.) partial recombinant protein with His tag expressed in <i>Escherichia coli</i> . This product with activity data is belong to bioactive protein.
Purification:	Escherichia coli expression system

## Target Details

Target:	FKBP14
Alternative Name:	FKBP14 ( <a href="#">FKBP14 Products</a> )
Background:	Full Gene Name: FK506 binding protein 14, 22 kDa Synonyms: FKBP22,FLJ20731
Gene ID:	55033
Pathways:	<a href="#">ER-Nucleus Signaling</a>

## Application Details

Application Notes:	Optimal working dilution should be determined by the investigator.
Comment:	<i>Escherichia coli</i> expression system Product Quality tested by: Loading 3 ug protein in 15% SDS-PAGE
Restrictions:	For Research Use only

## Handling

Format:	Liquid
Concentration:	1 mg/mL
Buffer:	In PBS, pH 7.4 (10 % glycerol).
Handling Advice:	Aliquot to avoid repeated freezing and thawing.
Storage:	-20 °C,-80 °C

## Images

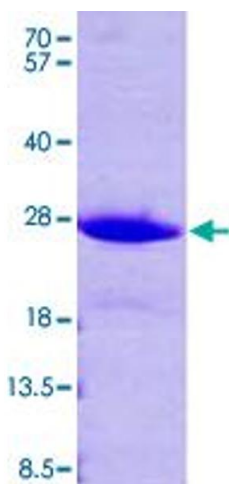


Image 1.